

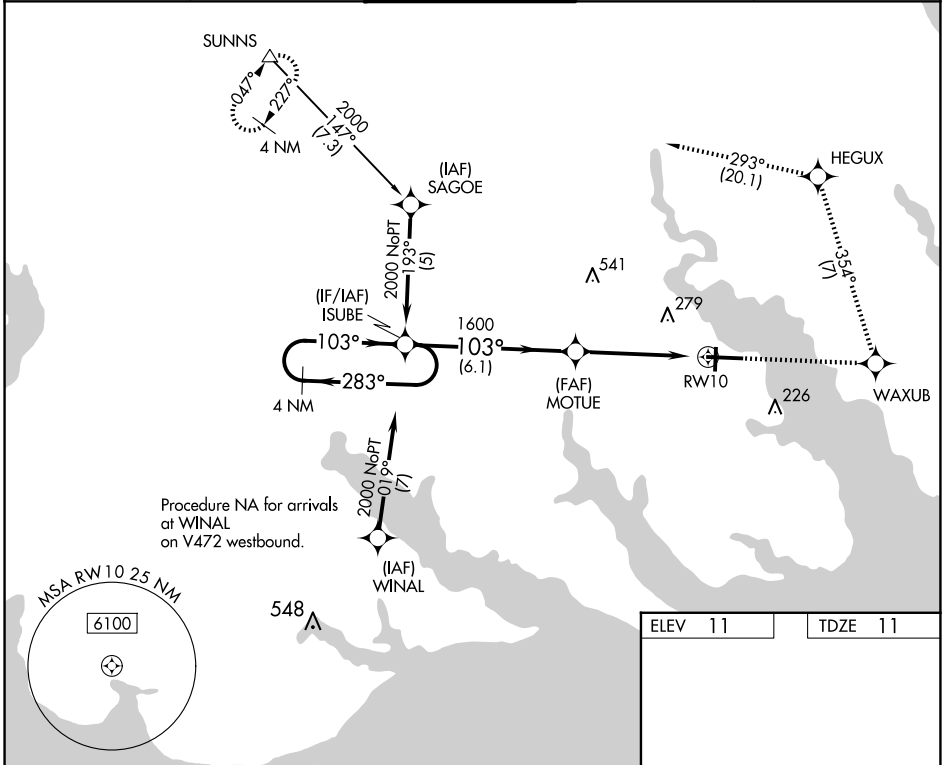
WAAS CH 65703 W10A	APP CRS 103°	Rwy Idg 7219 TDZE 11 Apt Elev 11
--	------------------------	---

RNAV (GPS) RWY 10

ELIZABETH CITY CG AIR STATION/RGNL (E/C/G)

RNP APCH. ▼ Procedure NA when tethered balloon located approximately 2 miles southeast of airport is flying.	SALS A2	MISSED APPROACH: Climb to 2000 direct WAXUB and left turn on track 354° to HEGUX and 2000 on track 293° to SUNNS and hold.
---	------------	--

ASOS 124.375	NORFOLK APP CON 119.55 269.425	ELIZABETH CITY TOWER★ 120.5 (CTAF) 355.6	GND CON 121.9	UNICOM 122.95
------------------------	--	--	-------------------------	-------------------------



SE-2, 15 MAY 2025 to 12 JUN 2025

SE-2, 15 MAY 2025 to 12 JUN 2025

VGSI and RNAV glidepath not coincident (VGSI Angle 3.00/TCH 49).	2000 WAXUB	HEGUX	2000 SUNNS
4 NM Holding Pattern ISUBE	tr 354°	tr 293°	
2000 ← 283°	1600	*1.3 NM to RWY 10	
GP 3.00° TCH 58	103°		
	6.1 NM	3.4 NM	1.3 NM
CATEGORY	A	B	C
LPV DA	261-3/4		250 (300-3/4)
RNAV MDA	460-1	449 (500-1)	460-1 3/8 449 (500-1 3/8)
CIRCLING	480-1	469 (500-1)	640-1 3/4 629 (700-1 3/4) 640-2 629 (700-2)

