

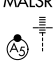
VORTAC PIA <b>115.2</b> Chan <b>99</b>	APP CRS <b>281°</b>	Rwy Idg <b>10104</b> TDZE <b>650</b> Apt Elev <b>661</b>
--	------------------------	--

# VOR Z or TACAN Z RWY 31

GENERAL DOWNING - PEORIA INTL(PIA)

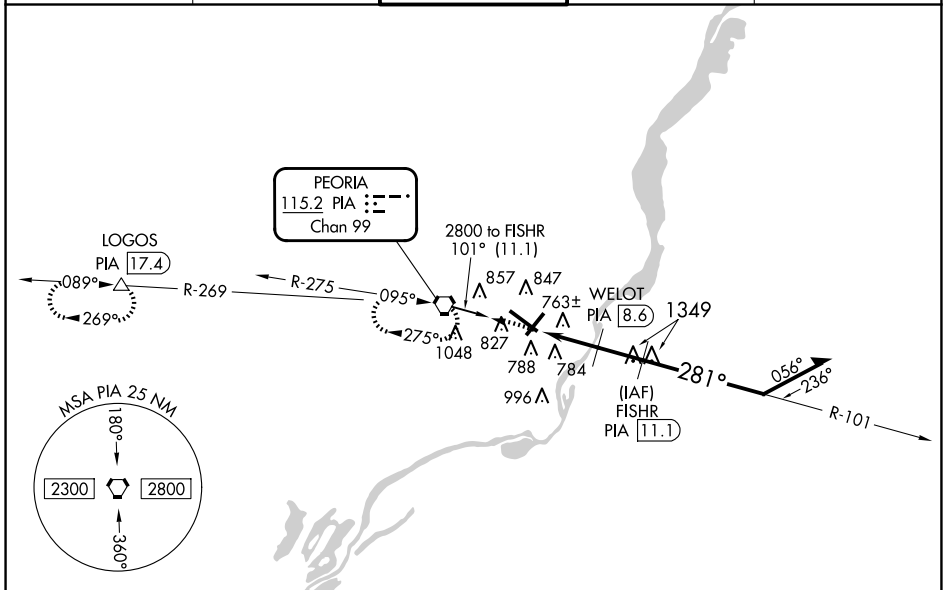
DME required.

▼ Rwy 31 helicopter visibility reduction below RVR 5000 NA.  
 ▲ Inop table does not apply. Straight-in and Circling Rwy 31 NA at night. Circling Rwy 13 NA at night. When local altimeter setting not received, use AAA altimeter setting; increase all MDAs 100 feet and Circling visibility Cat C/D ½ SM.

MALSRL  


MISSED APPROACH: Climb to 2800 direct PIA VORTAC and hold, continue climb-in-hold to 2800. (TACAN aircraft continue on PIA VORTAC R-269 to LOGOS/PIA 17.4 DME and hold west, right turn, 089° inbound).

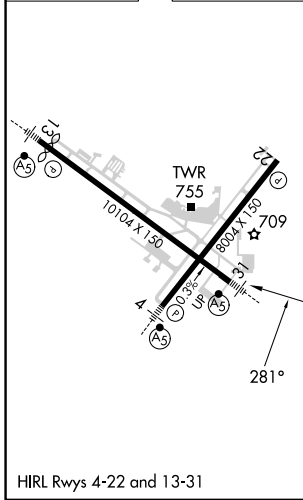
ATIS <b>126.1 282.2</b>	SAINT LOUIS APP CON <b>125.8 269.2</b>	PEORIA TOWER <b>124.0 353.85</b>	GND CON <b>121.85 348.6</b>	CLNC DEL <b>124.675 317.55</b>
----------------------------	---	-------------------------------------	--------------------------------	-----------------------------------

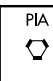
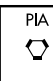

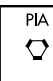
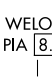

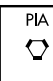
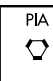
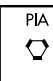


EC-3, 15 MAY 2025 to 12 JUN 2025

EC-3, 15 MAY 2025 to 12 JUN 2025

ELEV 661	<b>D</b>	TDZE 650
----------	----------	----------



	2800	Remain within 10 NM		
			107°	2800
			281°	2600
			3.00° TCH 55	
	3.5 NM	2.5 NM		
CATEGORY	A	B	C	D
S-31	1040/55	390 (400-1)	1040/60	390 (400-1¼)
<b>C</b> CIRCLING	1160-1	499 (500-1)	1180-1½ 519 (600-1½)	1400-2¼ 739 (800-2¼)