

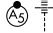
WAAS CH 56210 W04A	APP CRS 041°	Rwy Ldg TDZE Apt Elev	7826 652 661
--	------------------------	-----------------------------	---

RNAV (GPS) RWY 4

GENERAL DOWNING - PEORIA INTL (PIA)

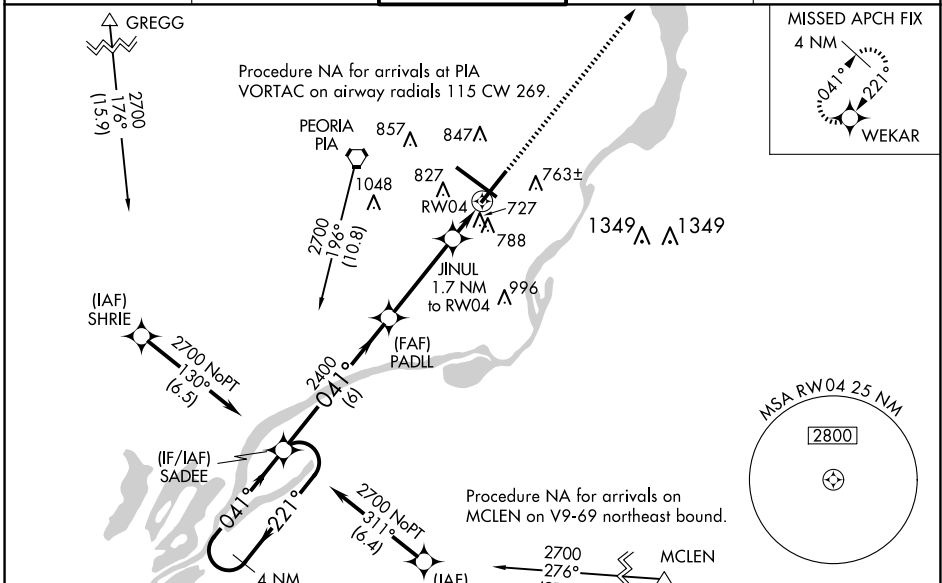
RNP APCH.

▼ For uncompensated Baro-VNAV systems, LNAV/VNAV NA below -19°C or above 54°C. VDP and Baro-VNAV NA with Logan County altimeter setting. When local altimeter setting not received, use Logan County altimeter setting and increase all DA 89 feet and all MDA 100 feet, increase LNAV/VNAV all Cats visibility 1/8 mile, LNAV Cat C and D visibility 1/4 mile, and Circling Cat C 1/4 mile and Cat D 1/2 mile. For inoperative MALSR using Logan County altimeter setting, increase LPV all Cats visibility to 1 mile. For inop ALS, increase LNAV Cat C/D visibility to 1 SM. Circling Rwy 13, 31 NA at night.

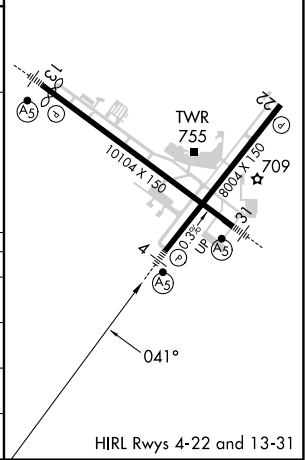
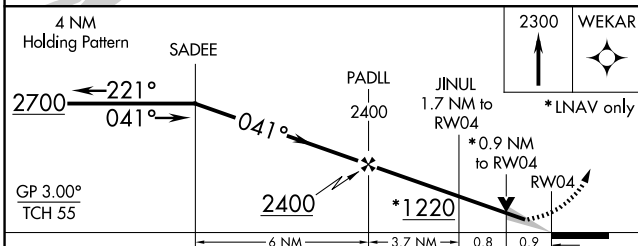
MALSR 

MISSED APPROACH: Climb to 2300 direct WEKAR and hold.

ATIS 126.1 282.2	SAINT LOUIS APP CON 125.8 269.2	PEORIA TOWER 124.0 353.85	GND CON 121.85 348.6	CLNC DEL 124.675 317.55
----------------------------	---	-------------------------------------	--------------------------------	-----------------------------------



ELEV 661	D	TDZE 652
----------	----------	----------



CATEGORY	A	B	C	D
LPV DA		857-1/2	205 (200-1/2)	
LNAV/VNAV DA		905-1/2	253 (300-1/2)	
LNAV MDA	1000-1/2	348 (400-1/2)	1000-5/8	348 (400-5/8)
C CIRCLING	1160-1	499 (500-1)	1180-1 1/2 519 (600-1/2)	1400-2 1/4 739 (800-2/4)

EC-3, 15 MAY 2025 to 12 JUN 2025

EC-3, 15 MAY 2025 to 12 JUN 2025