


| | | |
|--|------------------------|--|
| WAAS CH 77509 W31A | APP CRS 309° | Rwy Idg 10104 TDZE 650 Apt Elev 661 |
|--|------------------------|--|

RNAV (GPS) RWY 31

GENERAL DOWNING - PEORIA INTL (PIA)

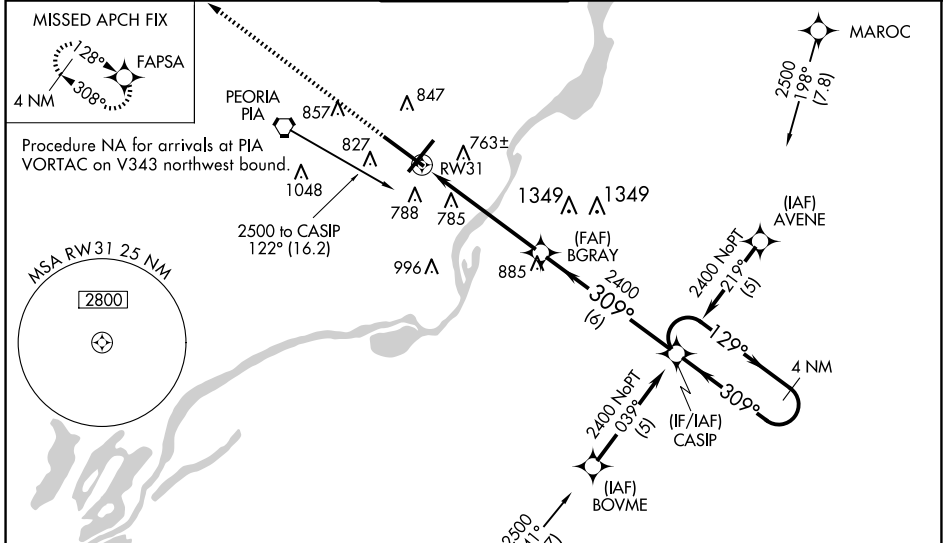
RNP APCH - GPS

▼ For uncompensated Baro-VNAV systems, LNAV/VNAV NA below -20°C or above 54°C.
 ▲ When local altimeter setting not received, use Lincoln altimeter setting and increase LPV DA to 1028 feet and all visibilities to RVR 3500; increase LNAV/VNAV DA to 1211 feet and all visibilities to 1 ¼ SM; increase all MDAs 100 feet and LNAV visibility Cat C/D to 1 ¼ SM, and Circling visibility Cat C/D ½ SM. Baro-VNAV and VDP NA when using Lincoln altimeter setting. For inop ALS, increase LPV all Cats visibility to RVR 4500, LNAV/VNAV all Cats visibility to 1 ¾ SM, and LNAV visibility Cat C/D to 1 ¾ SM. For inop ALS when using Lincoln altimeter setting, increase LPV all Cats visibility to RVR 5500, LNAV/VNAV all Cats visibility to 1 ¾ SM, and LNAV visibility Cat C/D to 1 ¾ SM.

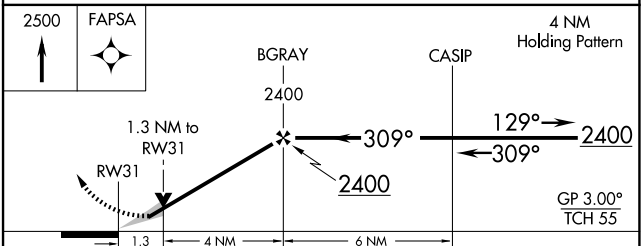
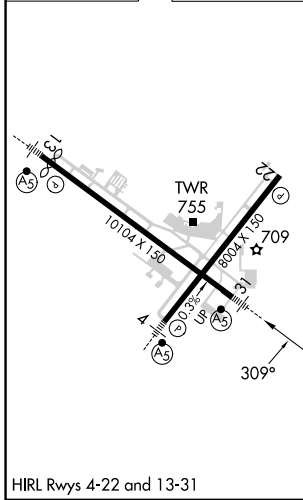
MALSRL


MISSED APPROACH:
 Climb to 2500 direct FAPSA and hold.

| | | | | |
|----------------------------|---|-------------------------------------|--------------------------------|-----------------------------------|
| ATIS 126.1 282.2 | SAINT LOUIS APP CON 125.8 269.2 | PEORIA TOWER 124.0 353.85 | GND CON 121.85 348.6 | CLNC DEL 124.675 317.55 |
|----------------------------|---|-------------------------------------|--------------------------------|-----------------------------------|



| | | |
|----------|----------|----------|
| ELEV 661 | D | TDZE 650 |
|----------|----------|----------|



| CATEGORY | A | B | C | D |
|-------------------|---------|-------------|-------------------------|-------------------------|
| LPV DA | | 939/24 | 289 (300-½) | |
| LNAV/VNAV DA | | 1122/60 | 472 (500-1¼) | |
| LNAV MDA | 1120/24 | 470 (500-½) | 1120/50 | 470 (500-1) |
| C CIRCLING | 1160-1 | 499 (500-1) | 1180-1½ 519 (600-1½) | 1400-2¼ 739 (800-2¼) |