

PEORIA, ILLINOIS

# HI-VOR Y or TACAN Y RWY 31

VORTAC PIA <b>115.2</b> Chan <b>99</b>	APCH CRS <b>281°</b>	Rwy Idg <b>10,104</b> TDZE Arpt Elev <b>661</b>
--	-------------------------	---

[USAF] GENERAL DOWNING - PEORIA INTL (KPIA)

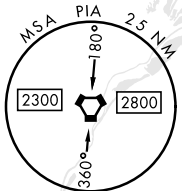
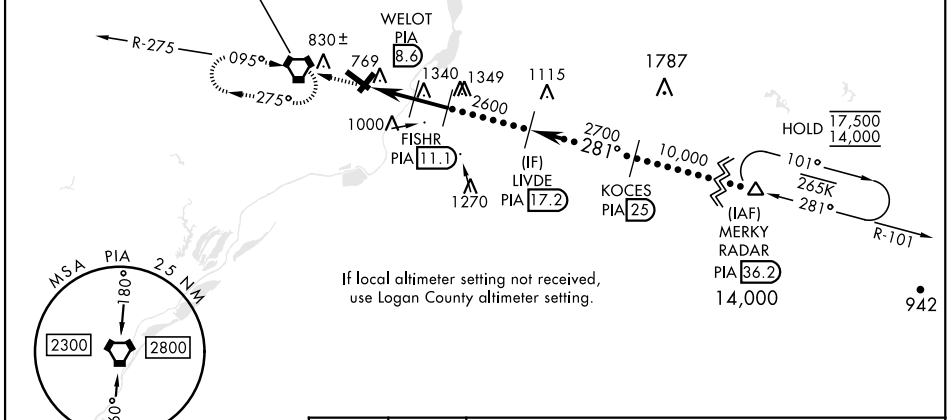
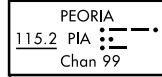
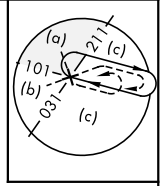
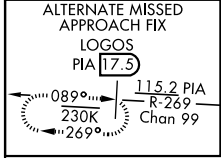
DME required. RADAR required for procedure entry.

▼ \*Straight-in Rwy 31, Circling Rwy 13-31 not authorized at night.



MISSED APPROACH: Climb to 2800, direct PIA VORTAC and hold. Continue climb-in-hold to 2800. (TACAN aircraft: continue on PIA R-269 to LOGOS/PIA 17.5 DME and hold west, right turn 089° inbound).

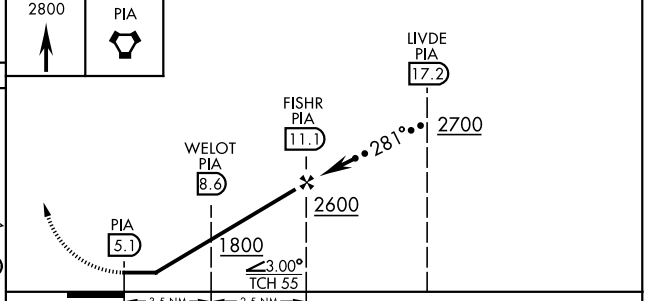
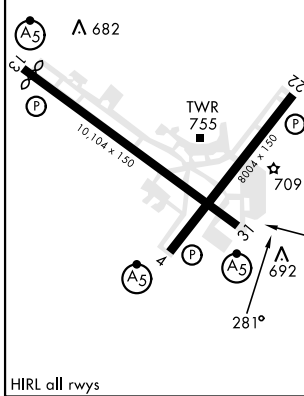
ATIS <b>126.1 282.2</b>	SAINT LOUIS APP CON <b>125.8 269.2</b>	PEORIA TOWER <b>124.0 353.85</b>	GND CON <b>121.85 348.6</b>
----------------------------	---	-------------------------------------	--------------------------------



EMERG SAFE ALT 100 NM 3300

ELEV	661	TDZE	650
------	-----	------	-----

Rwy 4 Idg 7826'  
Rwy 13 Idg 9604'



CATEGORY	C	D	E
S-31*	1040/60	390 (400-1½)	
CIRCLING*	1180-1½ 519 (600-1½)	1400-2¼ 739 (800-2¼)	1680-3 1019 (1100-3)
LOGAN COUNTY ALTIMETER MINIMA			
S-31*	1140-1¾	490 (500-1¾)	
CIRCLING*	1280-1¾ 619 (700-1¾)	1500-2¾ 839 (900-2¾)	1780-3 1119 (1200-3)

PEORIA, ILLINOIS

40°40'N-89°42'W

GENERAL DOWNING - PEORIA INTL (KPIA)

Amtd 2 31OCT24

# HI-VOR Y or TACAN Y RWY 31

EC-3, 15 MAY 2025 TO 12 JUN 2025

EC-3, 15 MAY 2025 TO 12 JUN 2025