

**NDB-B**

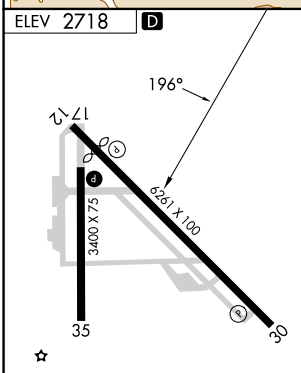
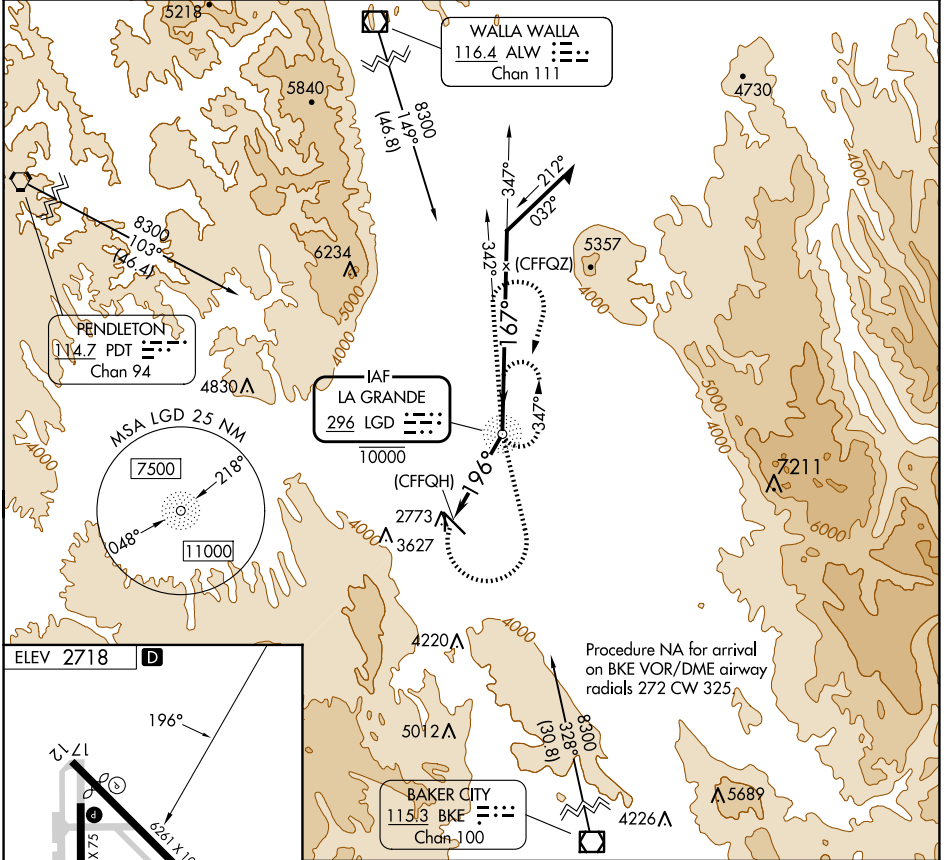
LA GRANDE/UNION COUNTY (LGD)

NDB LGD <b>296</b>	APP CRS <b>196°</b>	Rwy Idg TDZE Apt Elev <b>N/A</b> <b>N/A</b> <b>2718</b>
-----------------------	------------------------	--

**NA** Circling NA for Cat C southwest of Rwy 12-30.  
**-17°C**

MISSED APPROACH: Climbing left turn to 6500 direct LGD NDB and on bearing 342° from LGD NDB, then climbing right turn to 7700 direct LGD NDB and hold.

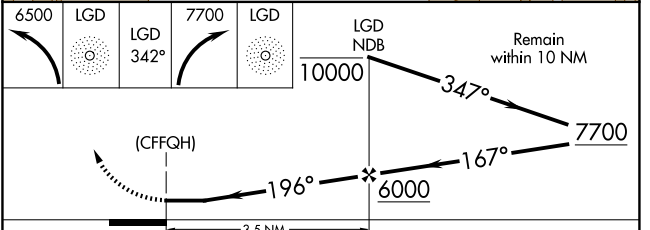
AWOS-3PT <b>135.075</b>	SEATTLE CENTER <b>132.6 269.35</b>	UNICOM <b>122.8 (CTAF)</b>
----------------------------	---------------------------------------	-------------------------------



REIL Rwy 30  
 REIL Rwys 17 and 35  
 MIRL Rwys 12-30 and 17-35

FAF to MAP 3.5 NM

Knots	60	90	120	150	180
Min:Sec	3:30	2:20	1:45	1:24	1:10



CATEGORY	A	B	C	D
<b>CIRCLING</b>	4600-1¼ 1882 (1900-1¼)	4600-1½ 1882 (1900-1½)	4600-3 1882 (1900-3)	NA

NW-1, 15 MAY 2025 to 12 JUN 2025

NW-1, 15 MAY 2025 to 12 JUN 2025