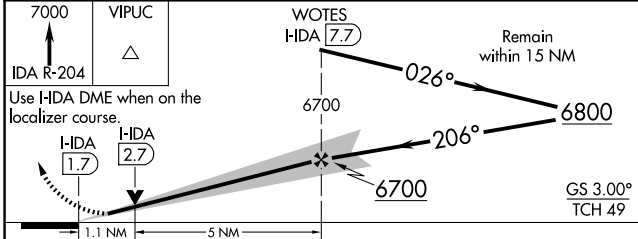
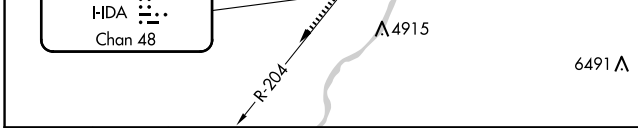
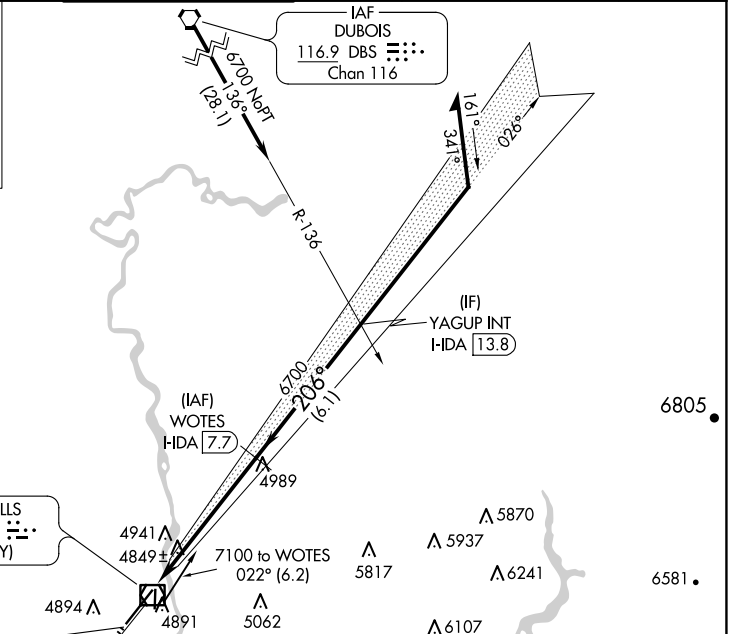
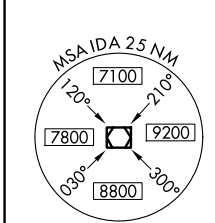
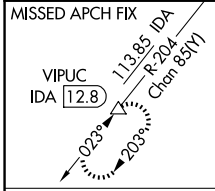


LOC/DME I-HDA	APP CRS	Rwy Idg	9002
111.1	206°	TDZE	4735
Chan 48		Apt Elev	4744

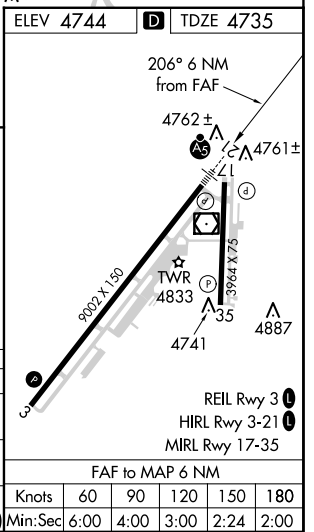
ILS or LOC RWY 21

IDAHO FALLS RGNL (IDA)

DME required.		MALSR	MISSED APPROACH: Climb to 7000 on IDA VOR/DME R-204 to VIPUC/12.8 DME and hold.						
<p>▼ Circling to Rwy 35 NA at night. For inop ALS, increase S-ILS 21 Cat E visibility to RVR 4000, and S-LOC 21 Cat E visibility to RVR 6000.</p> <p>▲</p>			ATIS	SALT LAKE CENTER	IDAHO FALLS TOWER*	GND CON	CLNC DEL	GCO	UNICOM
			135.325	128.35 239.25	118.5 (CTAF) 0 257.8	121.7	121.7	121.725	122.95



CATEGORY	A	B	C	D	E
S-ILS 21	4985/24		250 (300-½)		
S-LOC 21	5120/24	385 (400-½)	5120/35	385 (400-¾)	
C CIRCLING	5200-1 456 (500-1)	5300-1 556 (600-1)	5400-1¾ 656 (700-1¾)	5420-2¼ 676 (700-2¼)	5420-2½ 676 (700-2½)



NW-1, 15 MAY 2025 to 12 JUN 2025

NW-1, 15 MAY 2025 to 12 JUN 2025