

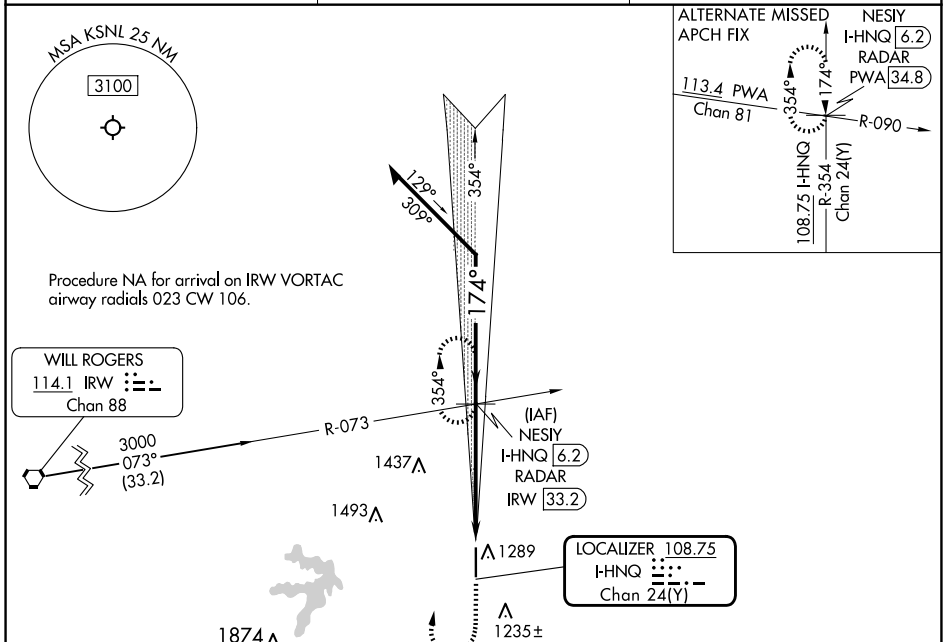
LOC/DME I-HNQ <b>108.75</b> Chan <b>24(Y)</b>	APP CRS <b>174°</b>	Rwy Idg TDZE Apt Elev <b>5997</b> <b>1073</b> <b>1073</b>
---	------------------------	--

# ILS or LOC RWY 17

SHAWNEE RGNL (SNL)

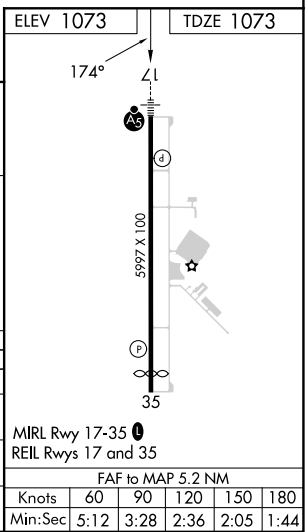
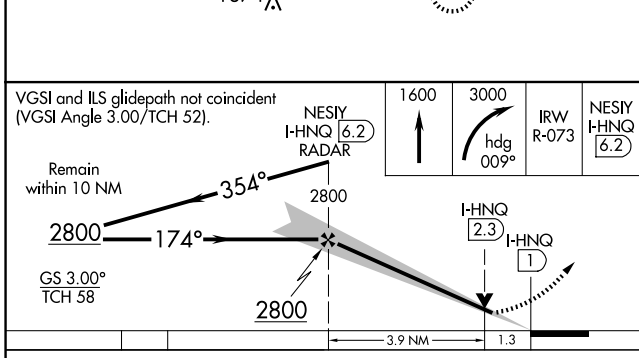
DME or RADAR required.	MALSR 	MISSED APPROACH: Climb to 1600 then climbing right turn to 3000 on heading 009° and IRW R-073 to NESIY/I-HNQ 6.2 DME/RADAR and hold, continue climb-in-hold to 3000.
------------------------	-----------	--

AWOS-3 <b>118.275</b>	OKE CITY APP CON <b>120.45 288.325</b>	UNICOM <b>122.7 (CTAF)</b>
--------------------------	---	-------------------------------



SC-1, 15 MAY 2025 to 12 JUN 2025

SC-1, 15 MAY 2025 to 12 JUN 2025



CATEGORY	A	B	C	D
S-ILS 17	1273-1/2 200 (200-1/2)			NA
S-LOC 17	1520-1/2 447 (500-1/2)		1520-7/8 447 (500-7/8)	NA
CIRCLING	1600-1 527 (600-1)		1640-1/2 567 (600-1/2)	NA