

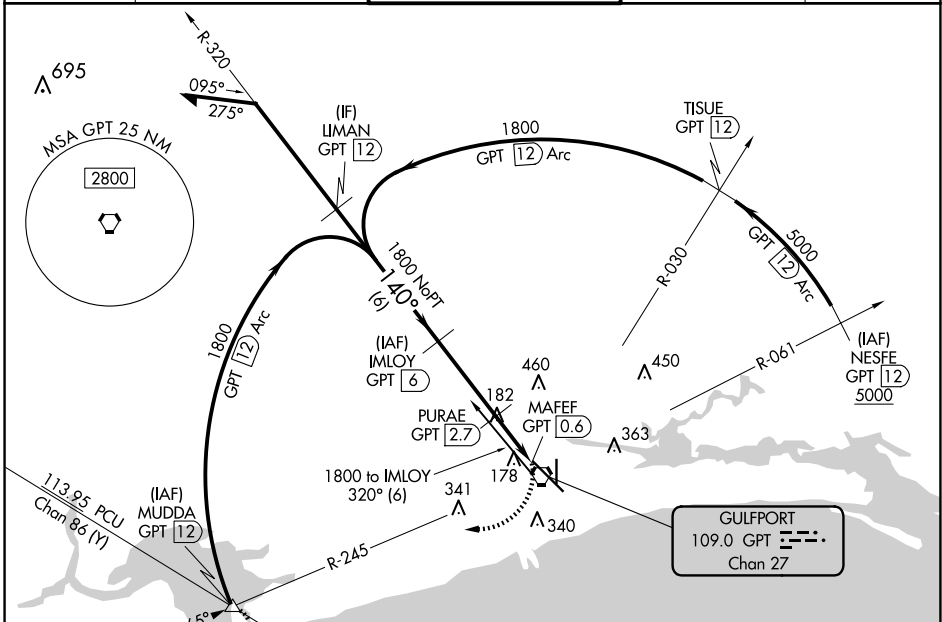
VORTAC GPT <b>109.0</b> Chan <b>27</b>	APP CRS <b>140°</b>	Rwy Idg TDZE <b>27</b> Apt Elev <b>28</b>	<b>9002</b>
--	------------------------	---	-------------

# VOR Z or TACAN Z RWY 14

GULFPORT-BILOXI INTL (GPT)

DME required.		MALSR	MISSED APPROACH: Climbing right turn to 2000 on GPT VORTAC R-245 to MUDDA INT/12 DME and hold.	
For inop ALS, increase S-14 Cat C/D/E visibility to RVR 6000.				

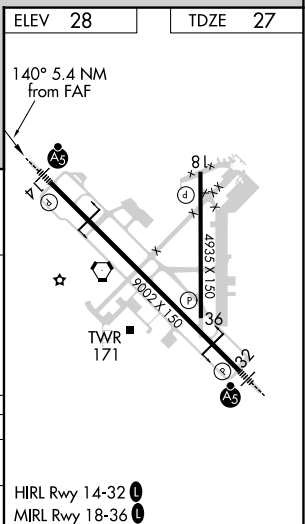
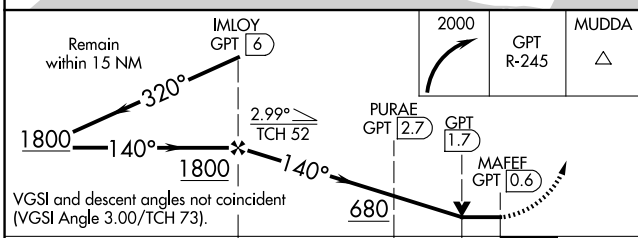
ATIS <b>119.45</b>	GULFPORT APP CON * <b>127.5 254.25</b>	GULFPORT TOWER * <b>123.7 (CTAF) 0 339.8</b>	GND CON <b>120.4 348.6</b>	UNICOM <b>122.95</b>
-----------------------	---	---	-------------------------------	-------------------------



SC-4, 15 MAY 2025 to 12 JUN 2025

SC-4, 15 MAY 2025 to 12 JUN 2025

ELEV 28	TDZE 27
---------	---------



CATEGORY	A	B	C	D	E
S-14	440/24	413 (500-1/2)	440/40 413 (500-3/4)		
CIRCLING	520-1 492 (500-1)	640-1 612 (700-1)	820-2 1/4 792 (800-2 1/4)	820-2 1/2 792 (800-2 1/2)	820-2 3/4 792 (800-2 3/4)