

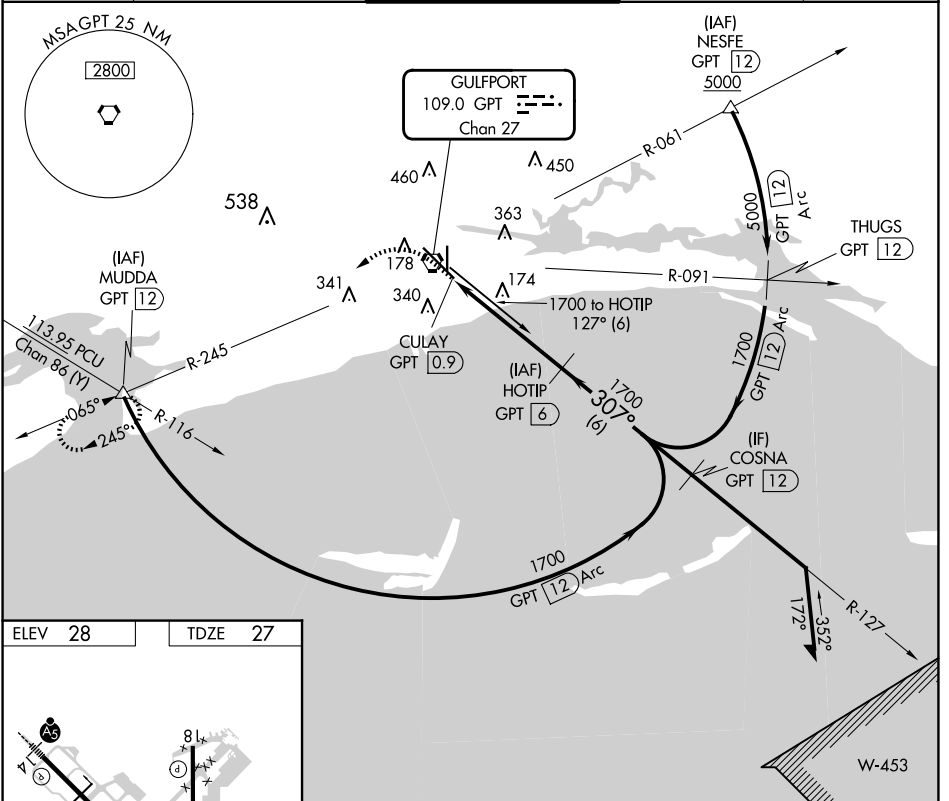
VORTAC GPT 109.0 Chan 27	APP CRS 307°	Rwy Idg TDZE Apt Elev	9002 27 28
--	------------------------	-----------------------------	---------------------------------------

VOR Z RWY 32

GULFPORT-BILOXI INTL (GPT)

DME required.	MALSR 	MISSED APPROACH: Climb to 700 then climbing left turn to 2000 on GPT VORTAC R-245 to MUDDA INT/12 DME and hold.
Rwy 32 helicopter visibility reduction below RVR 4000 NA. For inop ALS, increase S-32 Cat A/B visibility to RVR 5500, and Cat C/D/E to RVR 6000.		

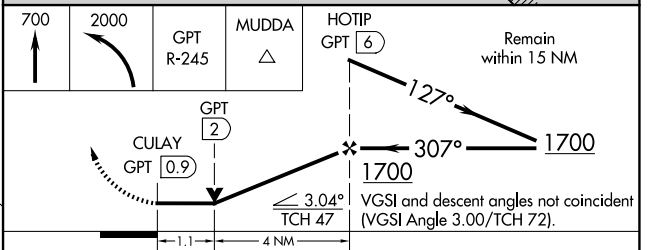
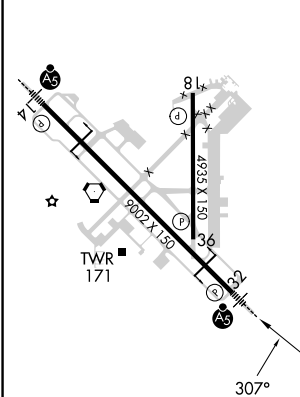
ATIS 119.45	GULFPORT APP CON * 127.5 254.25	GULFPORT TOWER * 123.7 (CTAF) 339.8	GND CON 120.4 348.6	UNICOM 122.95
-----------------------	---	---	-------------------------------	-------------------------



SC-4, 15 MAY 2025 to 12 JUN 2025

SC-4, 15 MAY 2025 to 12 JUN 2025

ELEV 28	TDZE 27
---------	---------



CATEGORY	A	B	C	D	E
S-32			440/40	413 (500-3/4)	
CIRCLING	520-1 492 (500-1)	640-1 612 (700-1)	760-2 732 (800-2)	760-2 1/4 732 (800-2 1/4)	760-2 1/2 732 (800-2 1/2)