

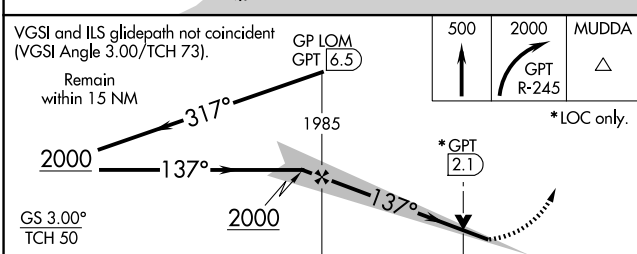
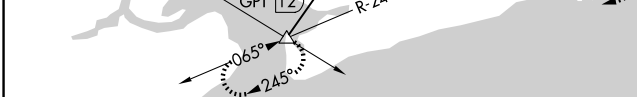
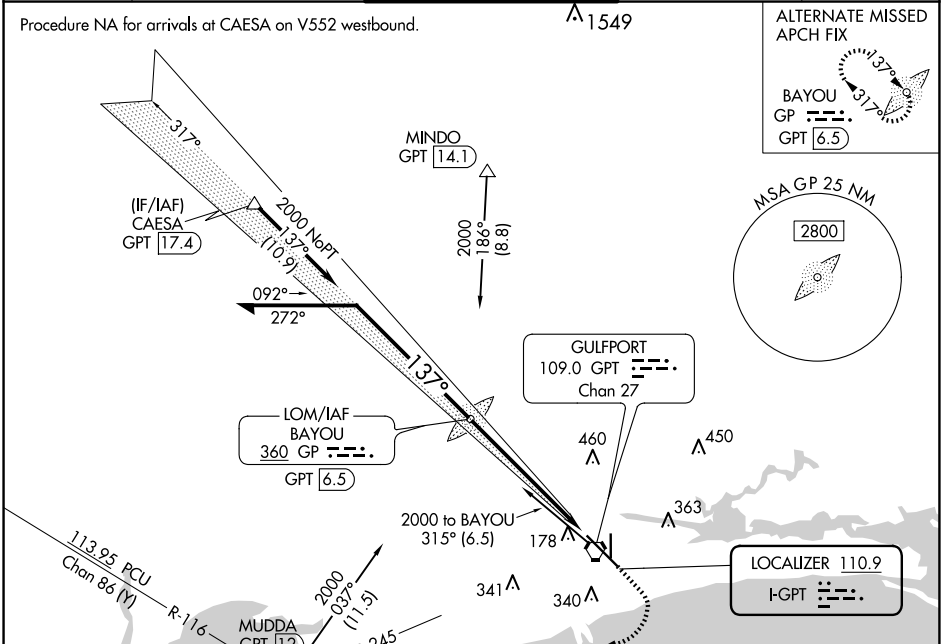
LOC I-GPT 110.9	APP CRS 137°	Rwy Idg TDZE Apt Elev	9002 27 28
---------------------------	------------------------	-----------------------------	---------------------------------------

ILS Z or LOC Z RWY 14

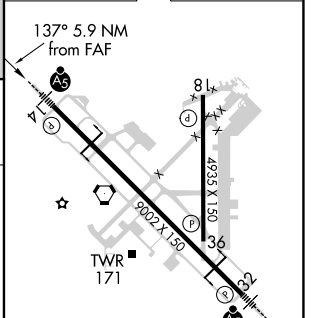
GULFPORT-BILOXI INTL (GPT)

<p>▼ For inop ALS, increase S-ILS 14 Cat E visibility to RVR 4000 and S-LOC 14 Cat E visibility to 1½ SM.</p> <p>▲ ASR **RVR 1800 authorized with use of FD or AP or HUD to DA.</p>	<p>MALSR</p>	<p>MISSED APPROACH: Climb to 500 then climbing right turn to 2000 on GPT VORTAC R-245 to MUDDA INT/12 DME and hold.</p>
--	---------------------	--

ATIS 119.45	GULFPORT APP CON * 127.5 254.25	GULFPORT TOWER * 123.7 (CTAF) 0 339.8	GND CON 120.4 348.6	UNICOM 122.95
-----------------------	---	---	-------------------------------	-------------------------



ELEV 28	TDZE 27
---------	---------



CATEGORY	A	B	C	D	E	
S-ILS 14**	227/24 200 (200-½)					
S-LOC 14	560/24	533 (600-½)	560/55		533 (600-1)	
CIRCLING	560-1	640-1	820-2¼	820-2½	820-2¾	
	532 (600-1)	612 (700-1)	792 (800-2¼)	792 (800-2½)	792 (800-2¾)	
	Knots					60 90 120 150 180
	Min:Sec					5:54 3:56 2:57 2:22 1:58

HIRL Rwy 14-32 **Ⓛ**

MIRL Rwy 18-36 **Ⓛ**

FAF to MAP 5.9 NM

SC-4, 15 MAY 2025 to 12 JUN 2025

SC-4, 15 MAY 2025 to 12 JUN 2025