

# RNAV (RNP) Z RWY 28R

PITTSBURGH INTL (PIT)

|             |          |              |
|-------------|----------|--------------|
| APP CRS     | Rwy Idg  | <b>10102</b> |
| <b>281°</b> | TDZE     | <b>1174</b>  |
|             | Apt Elev | <b>1203</b>  |

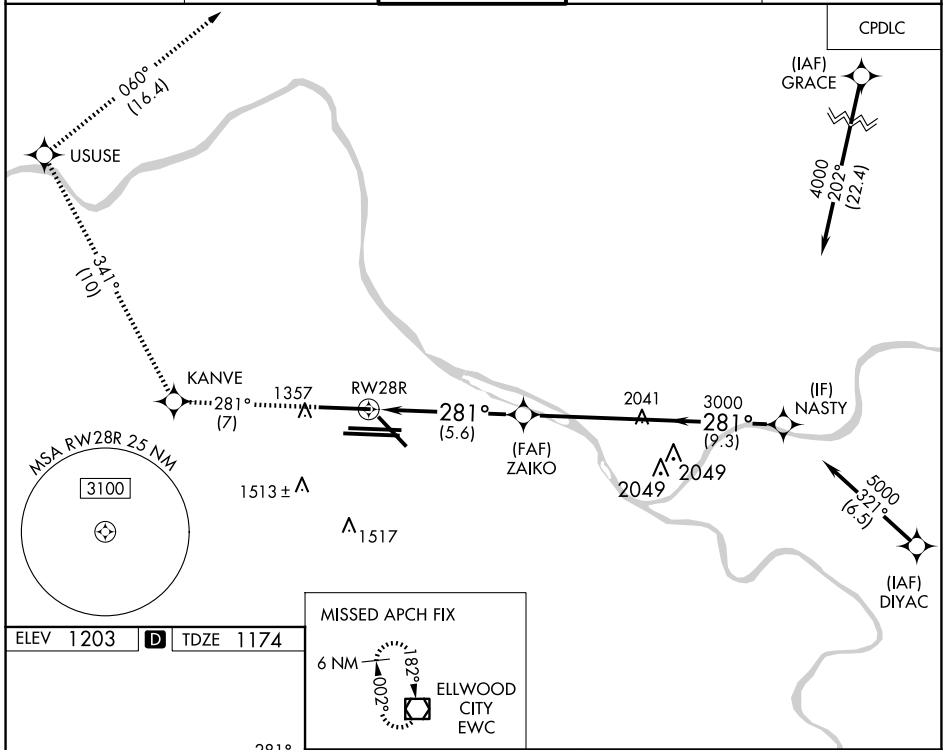
RNP AR APCH - GPS.

Simultaneous approach authorized. For uncompensated Baro-VNAV systems, procedure NA below -18°C or above 54°C. For inop ALS, increase RNP 0.30 all Cats visibility to 1 3/8 SM.

MALSR

MISSED APPROACH: Climb to 4000 on track 281° to KANVE and track 341° to USUSE and track 060° to EWC VOR/DME and hold.

|                   |                     |                    |                          |                     |
|-------------------|---------------------|--------------------|--------------------------|---------------------|
| D-ATIS            | PITTSBURGH APP CON  | PITTSBURGH TOWER   | GND CON                  | CLNC DEL            |
| ARR <b>127.25</b> | <b>123.95 360.8</b> | <b>128.3 291.7</b> | SOUTH <b>121.9 348.6</b> | <b>126.75 353.7</b> |
| DEP <b>135.9</b>  |                     |                    | NORTH <b>127.8 348.6</b> |                     |



NE-4, 15 MAY 2025 to 12 JUN 2025

NE-4, 15 MAY 2025 to 12 JUN 2025

|         |         |         |     |
|---------|---------|---------|-----|
| 4000    | KANVE   | USUSE   | EWC |
| ↑       | ✧       | ✧       | ◻   |
| tr 281° | tr 341° | tr 060° |     |

VGSI and RNAV glidepath not coincident (VGSI Angle 3.00/TCH 71).

RW28R

3000

ZAIKO

3000

NASTY

4000

281°

3000

GP 3.00° TCH 55

|             |   |         |             |   |
|-------------|---|---------|-------------|---|
| CATEGORY    | A | B       | C           | D |
| RNP 0.30 DA |   | 1675/55 | 501 (500-1) |   |

**AUTHORIZATION REQUIRED**

REIL Rwy 10C  
HIRL all Rwys  
TDZ/CL Rwys 10L, 10R, 28L, 28R, 28C, and 32