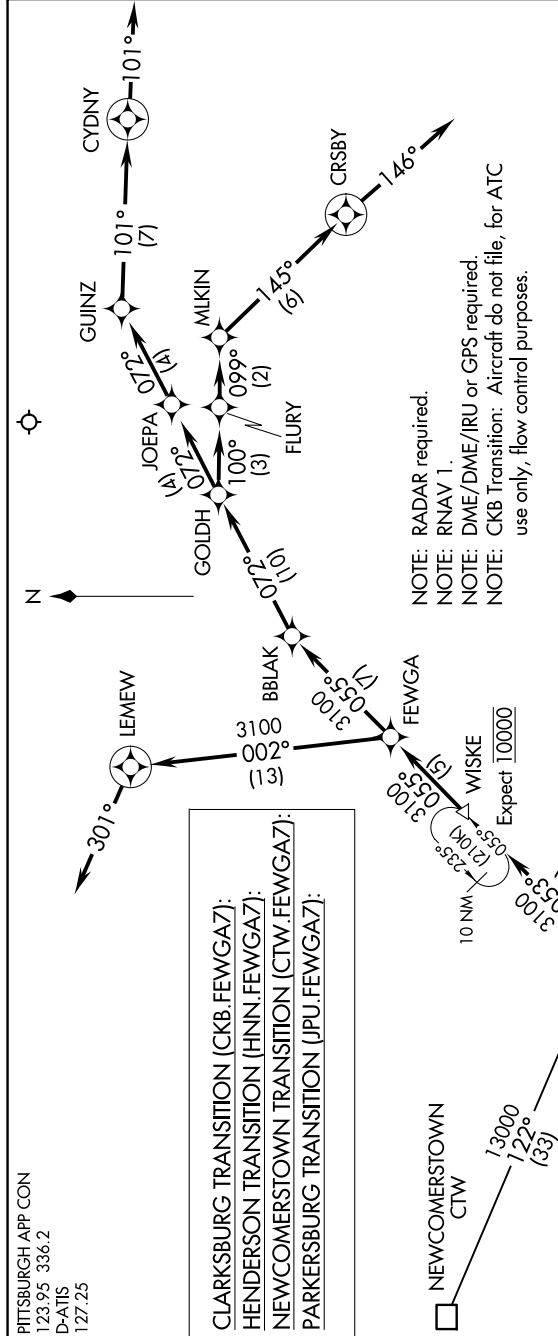


FEWGA SEVEN ARRIVAL (RNAV)

NE-4, 15 MAY 2025 to 12 JUN 2025



ARRIVAL ROUTE DESCRIPTION

From WISKE on track 055° to FEWGA, thence on assigned runway transition.

LANDING RWY 10L/10C/10R: From FEWGA on track 002° to LEMEW, then on heading 301°. Expect radar vectors to final approach course.

LANDING RWY 28L/28C/28R: From FEWGA on track 055° to BBLAK, then on track 072° to GOLDH, then on track 072° to JOEPA, then on track 072° to GUINZ, then on track 101° to CYDNY, then on heading 101°. Expect radar vectors to final approach course.

LANDING RWY 32: From FEWGA on track 055° to BBLAK, then on track 072° to GOLDH, then on track 100° to FLURY, then on track 099° to MLKIN, then on track 145° to CRSBY, then fly heading 146°. Expect radar vectors to final approach course.

- NOTE: RADAR required.
- NOTE: RNAV 1.
- NOTE: DME/DME/IRU or GPS required.
- NOTE: CKB Transition: Aircraft do not file, for ATC use only, flow control purposes.

- CLARKSBURG TRANSITION (CKB.FEWGA7):
- HENDERSON TRANSITION (HNN.FEWGA7):
- NEWCOMERTOWN TRANSITION (CTW.FEWGA7):
- PARKERSBURG TRANSITION (JPU.FEWGA7):

PITTSBURGH APP CON
123.95 336.2
D-ATIS
127.25

NOTE: Chart not to scale

NE-4, 15 MAY 2025 to 12 JUN 2025