

CAMP SPRINGS, MARYLAND

# TACAN RWY 1L

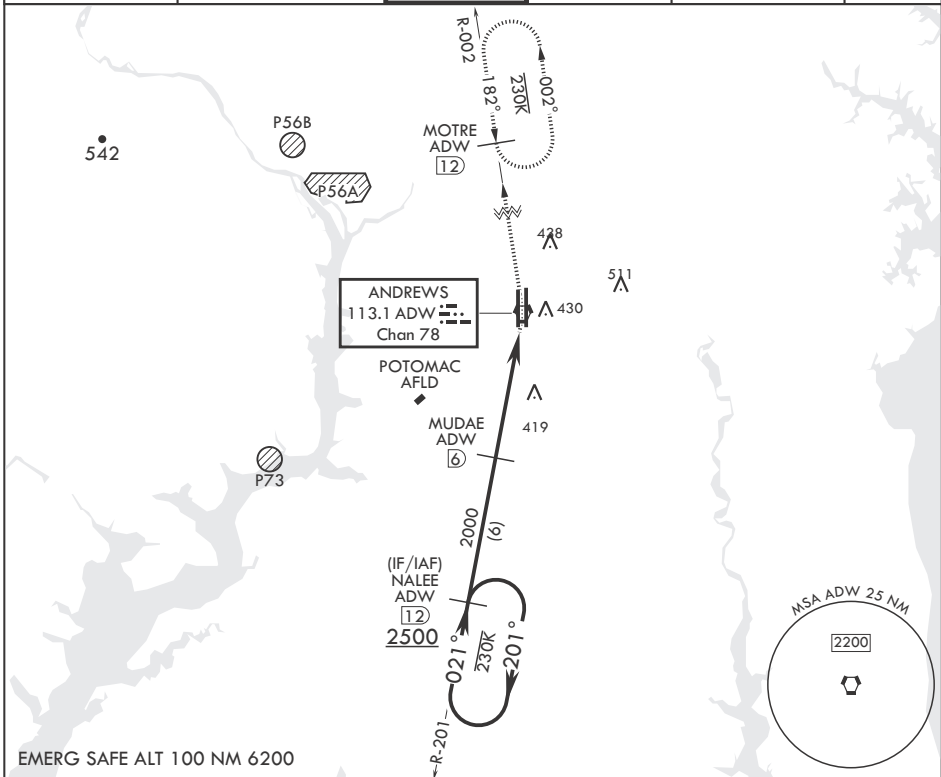
VORTAC ADW 113.1 Chan 78	APCH CRS 021°	Rwy ldg TDZE Arprt Elev	9318 261 280
--------------------------------	------------------	-------------------------------	--------------------

(USAF)

JOINT BASE ANDREWS (ANDREWS AFB) (KADW)

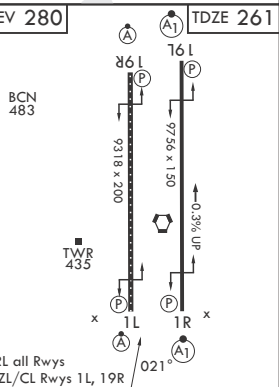
RADAR required	ALS-F-2 	MISSED APPROACH: Climb to 2500 via ADW VORTAC R-002 to MOTRE/ADW 12 DME and hold.
<p><b>V</b> * When ALS inop, increase CAT AB RVR to 55, vis to 1 mile, CAT CDE vis to 1 3/8 miles. ** Circling not authorized W of Rwy 1L-19R.</p>		

ATIS 133.675 251.05	POTOMAC APP CON 128.0 335.5	TOWER 118.4 349.0	GND CON 121.8 275.8	CLNC DEL 127.55 285.475	CPDLC
------------------------	--------------------------------	----------------------	------------------------	----------------------------	-------



EMERG SAFE ALT 100 NM 6200

<p>NALEE R-201 ADW (12) 2500</p> <p>MUDAE ADW (6) 2000</p> <p>ADW VORTAC 2500</p> <p>ADW COSUR (8) 2000</p> <p>ADW (1.8) 2000</p> <p>MOTRE ADW (12) 2500</p> <p>ADW R-002 2500</p> <p>2.92° ≥ TCH 72</p> <p>5.2 NM</p> <p>0.2</p>		ELEV 280	TDZE 261		
CATEGORY	A	B	C	D	E
S-1L*	720/24	459 (500-½)	720/45	459	(500-¾)
CIRCLING**	780-1	501 (600-1)	780-1½ 501 (600-1½)	840-2	561 (600-2)



HIRL all Rwys  
TDZL/CL Rwys 1L, 19R

CAMP SPRINGS, MARYLAND

38°49'N - 76°52'W JOINT BASE ANDREWS (ANDREWS AFB) (KADW)

Amdt 2 18MAY23

# TACAN RWY 1L

NE-3, 15 MAY 2025 to 12 JUN 2025

NE-3, 15 MAY 2025 to 12 JUN 2025