

CAMP SPRINGS, MARYLAND

TACAN RWY 19R

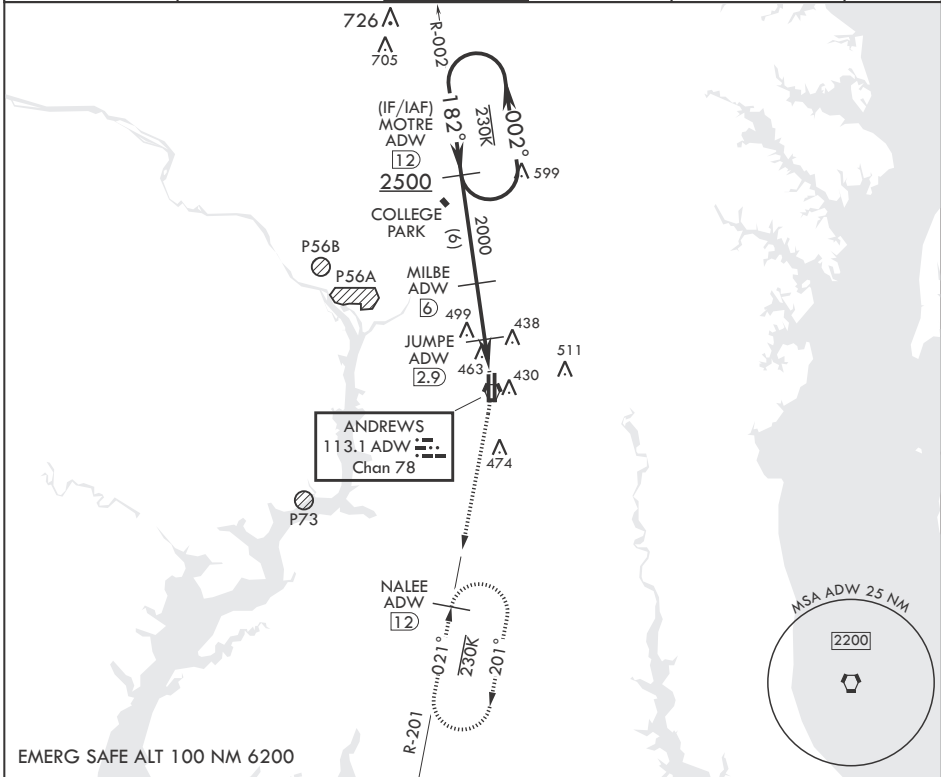
VORTAC ADW 113.1 Chan 78	APCH CRS 182°	Rwy ldg TDZE Arpt Elev	9318 274 280
--------------------------------	------------------	------------------------------	--------------------

(USAF)

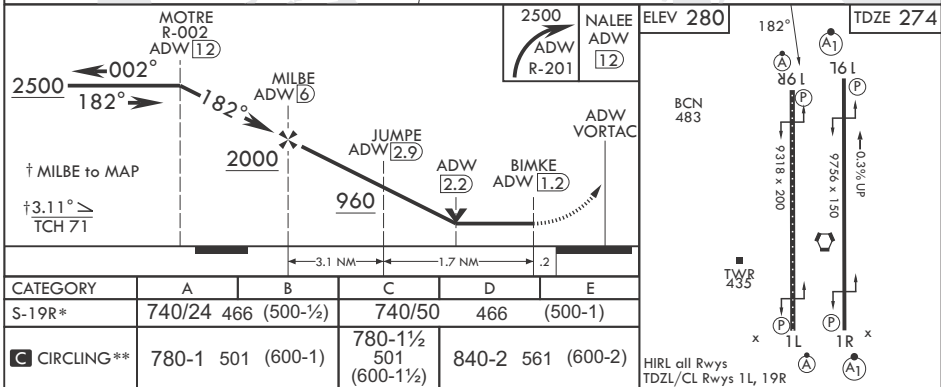
JOINT BASE ANDREWS (ANDREWS AFB) (KADW)

RADAR required	ALSIF-2 	MISSED APPROACH: Climbing to 2500, intercept ADW VORTAC R-201 to NALEE and hold.
<p>▼ * When ALS inop, increase CAT AB RVR to 55, vis to 1 mile, CAT CDE vis to 1 3/8 miles. ** Circling not authorized W of Rwy 1L-19R.</p>		

ATIS 133.675 251.05	POTOMAC APP CON 128.0 335.5	TOWER 118.4 349.0	GND CON 121.8 275.8	CLNC DEL 127.55 285.475	CPDLC
------------------------	--------------------------------	----------------------	------------------------	----------------------------	-------



EMERG SAFE ALT 100 NM 6200



NE-3, 15 MAY 2025 to 12 JUN 2025

NE-3, 15 MAY 2025 to 12 JUN 2025

CAMP SPRINGS, MARYLAND

38°49'N - 76°52'W JOINT BASE ANDREWS (ANDREWS AFB) (KADW)

Amdt 2 18MAY23

TACAN RWY 19R