

CAMP SPRINGS, MARYLAND

# RNAV (GPS)-A

-(USAF)

JOINT BASE ANDREWS (ANDREWS AFB) (KADW)

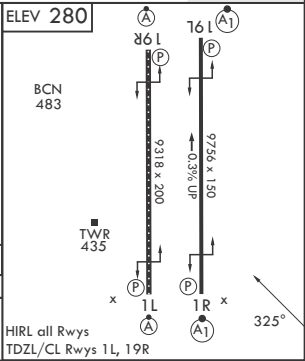
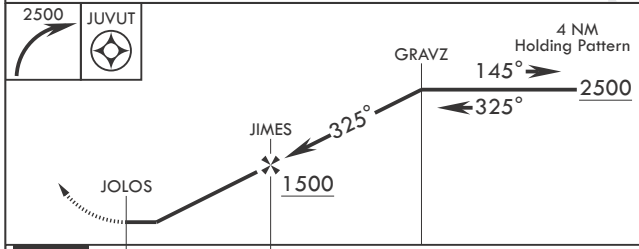
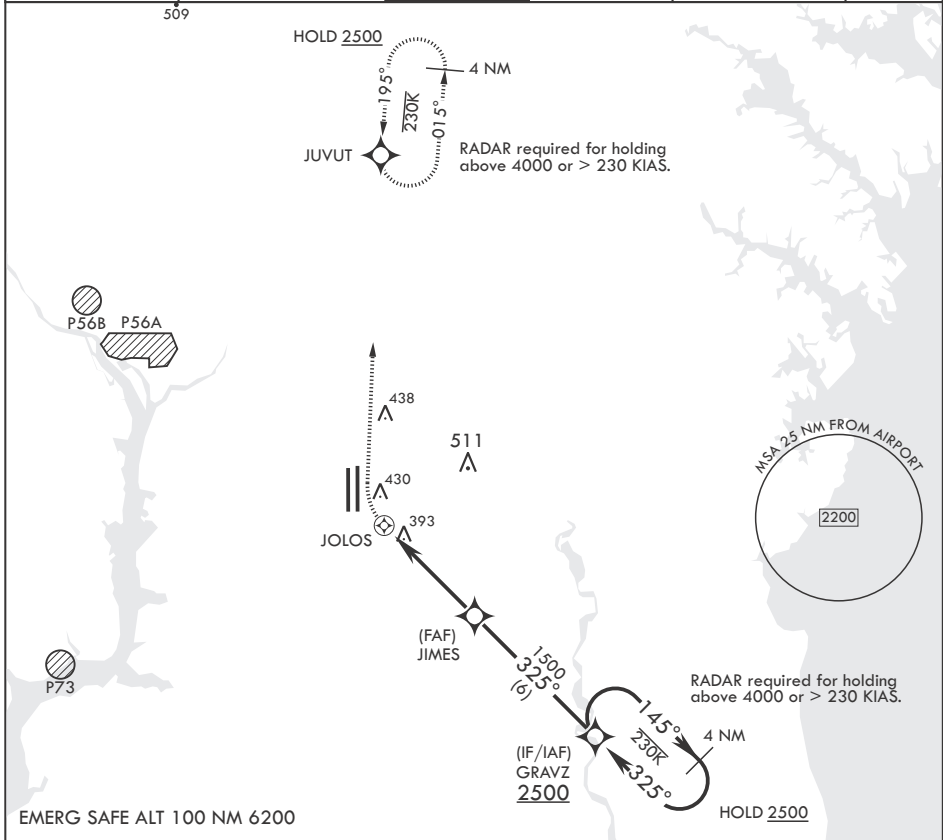
APCH CRS <b>325°</b>	Rwy Idg TDZE Arprt Elev <b>N/A</b> <b>N/A</b> <b>280</b>
-------------------------	---

DME/DME RNP - 0.3 NA

MISSED APPROACH: Climbing right turn to 2500 direct JUVUT and hold.

\* Circling not authorized W of Rwy 1L-19R.

ATIS <b>133.675 251.05</b>	POTOMAC APP CON <b>128.0 335.5</b>	TOWER <b>118.4 349.0</b>	GND CON <b>121.8 275.8</b>	CLNC DEL <b>127.55 285.475</b>	CPDLC
-------------------------------	---------------------------------------	-----------------------------	-------------------------------	-----------------------------------	-------



CATEGORY	A	B	C	D	E
CIRCLING*	780-1¼ 501 (600-1¼)		780-1½ 501 (600-1½)	840-2 561 (600-2)	

CAMP SPRINGS, MARYLAND

38°49'N - 76°52'W JOINT BASE ANDREWS (ANDREWS AFB) (KADW)

Amdt 1 18MAY23

# RNAV (GPS)-A

NE-3, 15 MAY 2025 to 12 JUN 2025

NE-3, 15 MAY 2025 to 12 JUN 2025