

CAMP SPRINGS, MARYLAND

# RNAV (GPS) RWY 19L

WAAS CH 52203 W19A	APCH CRS 190°	Rwy ldg TDZE Arprt Elev	9756 279 280
--------------------------	------------------	-------------------------------	--------------------

- (USAF)

JOINT BASE ANDREWS (ANDREWS AFB) (KADW)

DME/DME RNP-0.3 NA

▼ \* When ALS inop, increase RVR to 40, vis to 3/4 mile.  
 \*\* When ALS inop, increase RVR to 60, vis to 1 1/8 miles.

ALS-1



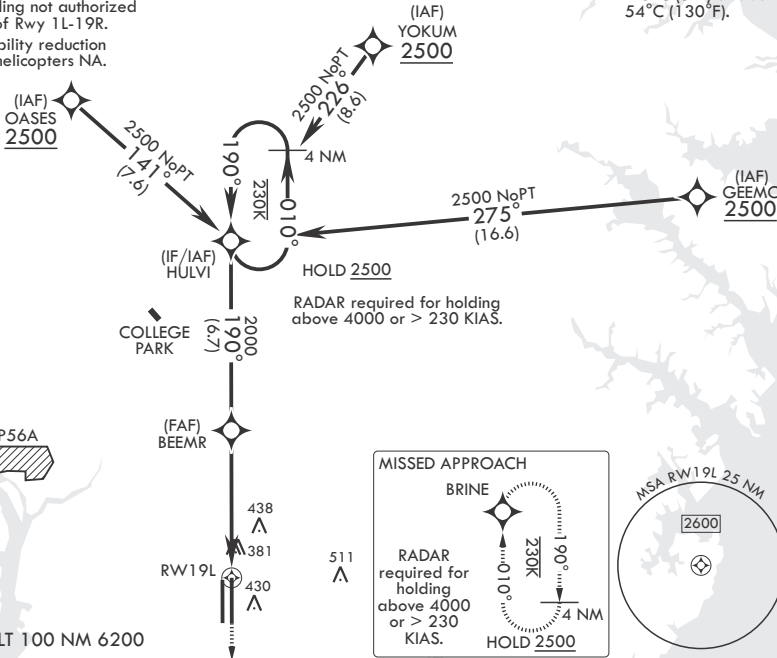
MISSED APPROACH: Climb to 2500 direct BRINE and hold.

ATIS 133.675 251.05	POTOMAC APP CON 128.0 335.5	TOWER 118.4 349.0	GND CON 121.8 275.8	CLNC DEL 127.55 285.475	CPDLC
------------------------	--------------------------------	----------------------	------------------------	----------------------------	-------

634

\*\*\* When ALS inop, increase CAT AB RVR to 55, vis to 1 mile; CAT CDE RVR to 60, vis to 1 1/8 miles.  
 \*\*\*\* Circling not authorized W of Rwy 1L-19R.  
 Visibility reduction by helicopters NA.

For uncompensated Baro-VNAV systems, Procedure NA below -15°C (5°F) or above 54°C (130°F).



EMERG SAFE ALT 100 NM 6200

4 NM Holding Pattern HULVI 2500 010° 190° 190° BEEMR 2000 1.1 NM to RWY 19L 5.2 NM RWY 19L	2500 BRINE ELEV 280	TDZE 279				
GP 3.00° TCH 56	BCN 483	9318 x 200 9756 x 150 0.3% DOWN				
CATEGORY	A	B	C	D	E	
LPV DA*		479/24	200		(200-1/2)	
LNAV/VNAV DA**		680/40	401		(400-3/4)	
LNAV MDA***		680/24 401 (400-1/2)	680/40	401	(400-3/4)	
☐ CIRCLING****		780-1 500 (500-1)	780-1 1/2 500 (500-1 1/2)	840-2 560 (600-2)		
HIRL all Rwys TDZL/CL Rwys 1L, 19R						

NE-3, 15 MAY 2025 to 12 JUN 2025

NE-3, 15 MAY 2025 to 12 JUN 2025

CAMP SPRINGS, MARYLAND

38°49'N - 76°52'W JOINT BASE ANDREWS (ANDREWS AFB) (KADW)

Amdt 1 18MAY23

# RNAV (GPS) RWY 19L