

# JEFSN TWO DEPARTURE (RNAV) (JEFSN2.JEFSN)

**TOP ALTITUDE:  
3000**

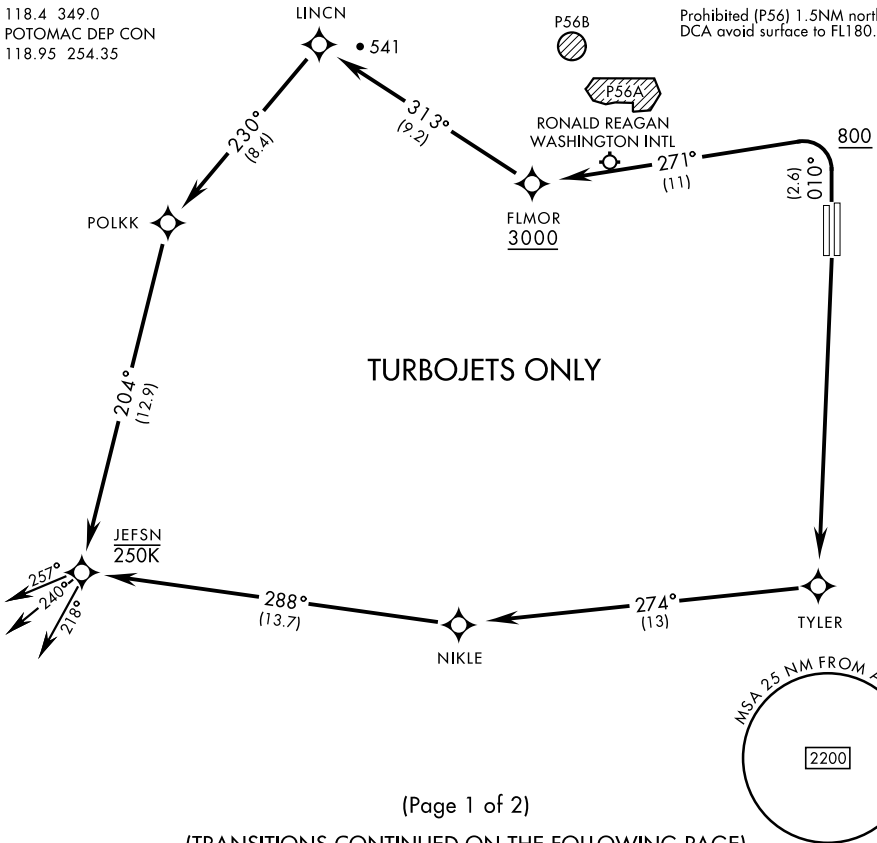
ATIS 133.675 251.05  
CPDLC  
GND CON  
121.8 275.8  
ANDREWS TOWER  
118.4 349.0  
POTOMAC DEP CON  
118.95 254.35

RNAV1-GPS  
RADAR required

[USAF]

Max 250 KIAS until JEFSN

Prohibited (P56) 1.5NM north of  
DCA avoid surface to FL180.



**DEPARTURE ROUTE DESCRIPTION**

**TAKEOFF RWY 1L/R:** Climb on heading 010° to 800, then climbing left turn to 3000 direct FLMOR. Then via depicted route to JEFSN, thence...

**TAKEOFF RWY 19L/R:** Climb direct TYLER then via depicted route to JEFSN, thence...

... on assigned transition. Maintain 3000, expect further clearance to filed alt within ten (10) minutes after departure.

FLASK TRANSITION (JEFSN2.FLASK)  
GLANC TRANSITION (JEFSN2.GLANC)  
MAULS TRANSITION (JEFSN2.MAULS)  
MELTN TRANSITION (JEFSN2.MELTN)  
RRSIN TRANSITION (JEFSN2.RRSIN)