

(SAYBR3.SAYBR) 21112

SAYBR THREE DEPARTURE (RNAV)

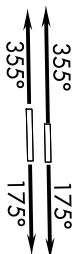
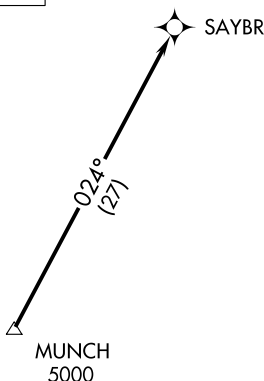
AL-556 (FAA)

AUSTIN-BERGSTROM INTL (AUS)

AUSTIN, TEXAS

D-ATIS
 124.4
 CLNC DEL
 125.5 263.0
 CPDLC
 GND CON
 121.9 348.6
 AUSTIN TOWER
 121.0 281.5
 AUSTIN DEP CON
 127.225 317.65

**TOP ALTITUDE:
 ASSIGNED BY ATC**



NOTE: RADAR required.
 NOTE: DME/DME/IRU or GPS required.
 NOTE: RNAV 1.
 NOTE: For DFW terminal area arrivals
 at FL230 or below only.

TAKEOFF MINIMUMS

Rwys 18L/R: Standard.
 Rwys 36L/R: Standard with minimum climb
 of 240' per NM to 2600.

NOTE: Chart not to scale.



DEPARTURE ROUTE DESCRIPTION

TAKEOFF RUNWAYS 18L/R: Climb on heading 175° or as assigned by ATC for
 vectors to cross MUNCH at or above 5000, thence

TAKEOFF RUNWAYS 36L/R: Climb on heading 355° or as assigned by ATC for
 vectors to cross MUNCH at or above 5000, thence

. . . . on track 024° to SAYBR. Maintain altitude assigned by ATC.
 Expect filed altitude 10 minutes after departure.

SAYBR THREE DEPARTURE (RNAV)

(SAYBR3.SAYBR) 22APR21

AUSTIN, TEXAS

AUSTIN-BERGSTROM INTL (AUS)

SC-3, 15 MAY 2025 to 12 JUN 2025

SC-3, 15 MAY 2025 to 12 JUN 2025