

RNAV (RNP) Z RWY 18L

AUSTIN-BERGSTROM INTL (AUS)

APP CRS	Rwy Idg	9000
175°	TDZE	492
	Apt Elev	542

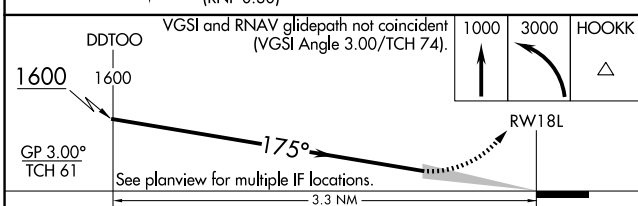
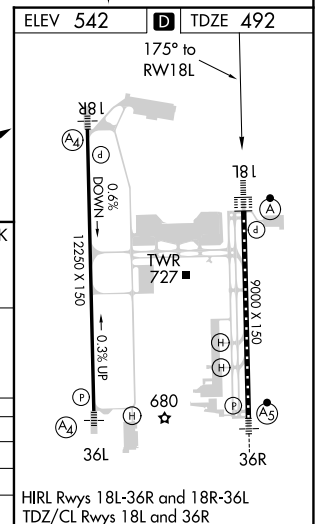
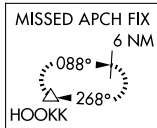
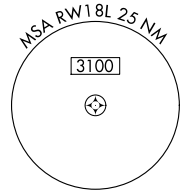
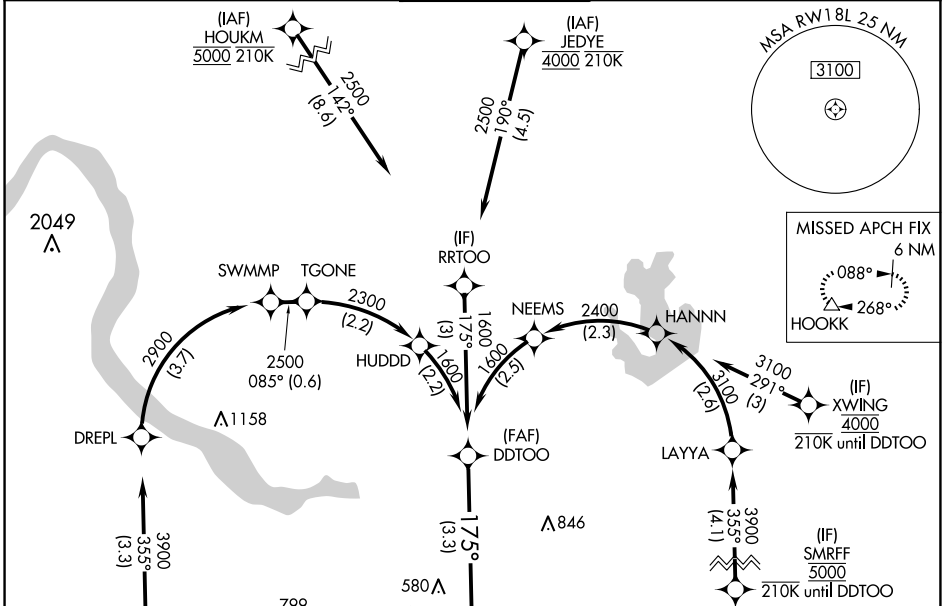
RADAR required. RNP AR APCH-GPS.

Simultaneous approach authorized. For uncompensated Baro-VNAV systems, procedure NA below -5°C or above 54°C.

ALSF-2

MISSED APPROACH: Climb to 1000 then climbing left turn to 3000 direct HOOKK and hold.

D-ATIS	AUSTIN APP CON	AUSTIN TOWER	GND CON	CLNC DEL	CPDLC
124.4	127.225 317.65 (EAST) 120.875 270.25 (SOUTH) 119.0 370.85 (WEST)	121.0 281.5	121.9 348.6	125.5 263.0	



CATEGORY	A	B	C	D
RNP 0.24 DA		825/26	333 (300-1/2)	
RNP 0.30 DA		885/35	393 (400-3/8)	

AUTHORIZATION REQUIRED

SC-3, 15 MAY 2025 to 12 JUN 2025

SC-3, 15 MAY 2025 to 12 JUN 2025