

SPOKANE, WASHINGTON

# ILS or LOC RWY 23

LOC I-SKA <b>110.3</b>	APCH CRS <b>231°</b>	Rwy Idg <b>13,899</b> TDZE <b>2423</b> Arprt Elev <b>2462</b>
---------------------------	-------------------------	---

[USAF]

FAIRCHILD AFB (KSKA)

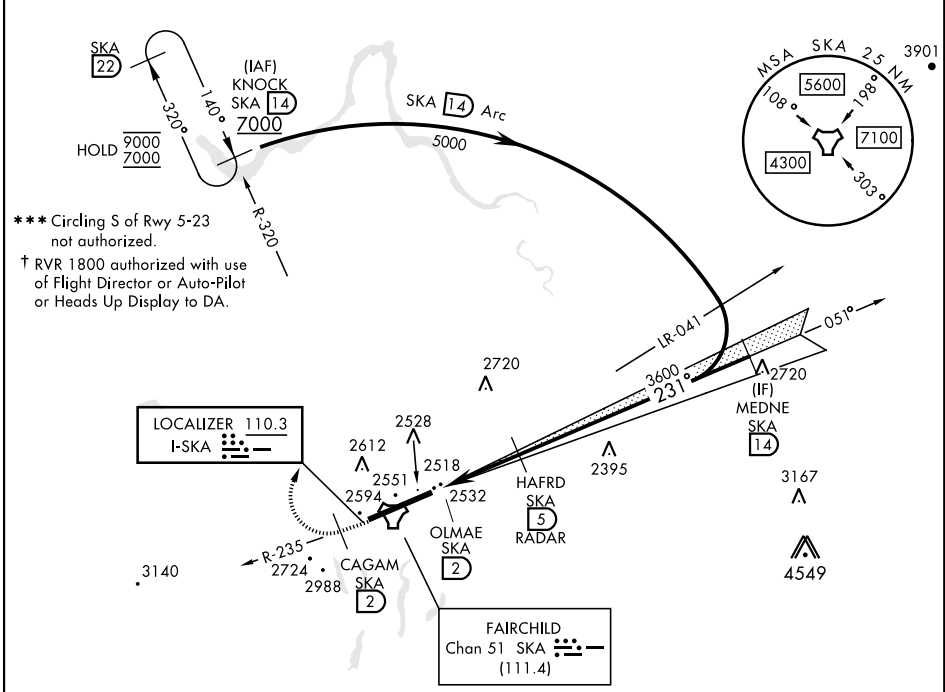
DME or RADAR reqrd for LOC. RADAR reqrd for KNOCK holding.



MISSED APPROACH: Climb to 7000 via SKA R-235.  
At CAGAM, turn right heading 005° to intcp SKA R-320 to KNOCK and hold, cont climb in hold to 7000.

▲ When ALS inop, increase RVR to 40 and vis to ¼ mile.  
\*\* When ALS inop, increase RVR to 55 and vis to 1 mile.

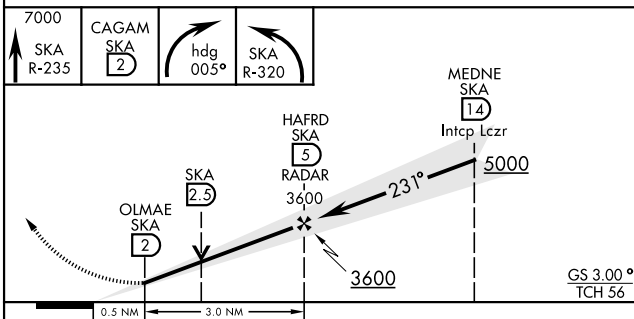
ATIS <b>257.625</b>	SPOKANE APP CON <b>123.75 282.25</b> (208° - 028°) <b>133.35 263.0</b> (029° - 207°)	TOWER <b>120.35 233.7</b>	GND CON <b>123.6 275.8</b>
------------------------	--	------------------------------	-------------------------------



NW-1, 15 MAY 2025 to 12 JUN 2025

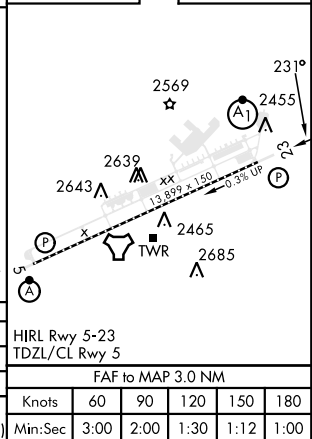
NW-1, 15 MAY 2025 to 12 JUN 2025

EMERG SAFE ALT 100 NM 10,900



ELEV 2462	TDZE 2423
-----------	-----------

CATEGORY	A	B	C	D	E
S-ILS 23 *†	2623/24		200	(200-½)	
S-LOC 23 **	2800/24	377 (400-½)	2800/35	377	(400-¾)
CIRCLING ***	2900-1	2920-1	3040-1½	3040-2	3600-3
	438 (500-1)	458 (500-1)	578 (600-1½)	578 (600-2)	1138 (1200-3)



SPOKANE, WASHINGTON

47°37'N-117°39'W

FAIRCHILD AFB (KSKA)

Amdt 4 03NOV22

# ILS or LOC RWY 23