

SPOKANE, WASHINGTON

ILS RWY 5 (CAT II)

LOC I-FRC 110.3	APCH CRS 051°	Rwy Idg 13,899 TDZE 2462 Arpt Elev 2462
---------------------------	-------------------------	--

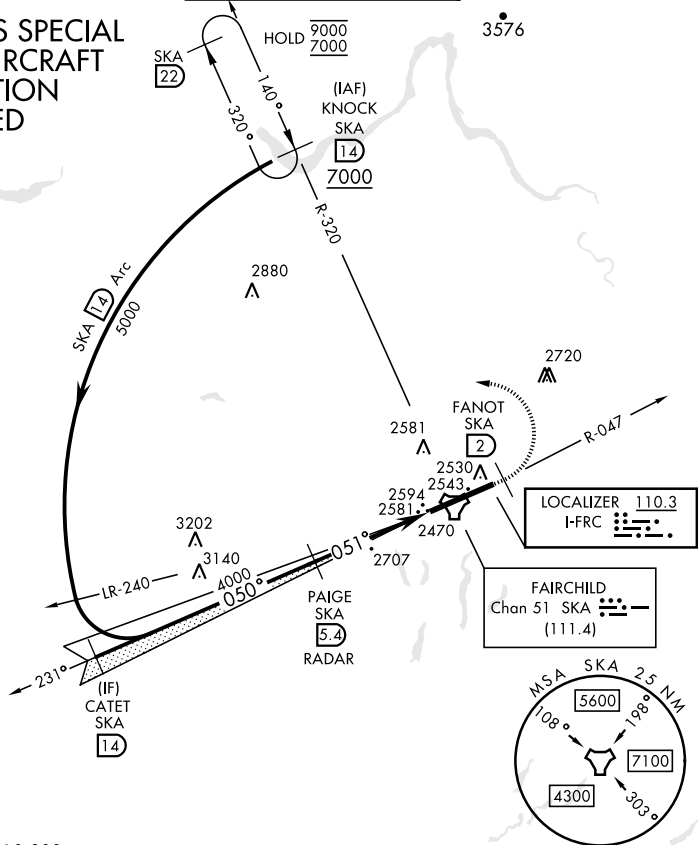
[USAF]

FAIRCHILD AFB (KSKA)

RADAR required for KNOCK holding.		ALSF-2	MISSED APPROACH: Climb to 7000 via SKA TACAN R-047. At FANOT turn left hdg 275° to intcp SKA R-320 to KNOCK and hold, continue climb in hold to 7000.
-----------------------------------	--	--------	--

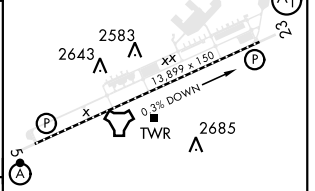
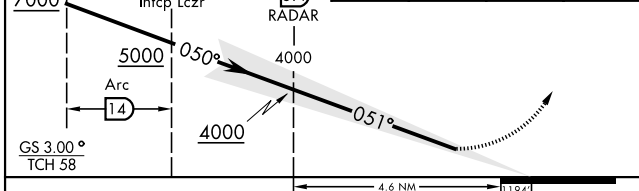
ATIS 257.625	SPOKANE APP CON 123.75 282.25 (208° - 028°) 133.35 263.0 (029° - 207°)	TOWER 120.35 233.7	GND CON 123.6 275.8
------------------------	--	------------------------------	-------------------------------

CATEGORY II ILS SPECIAL AIRCREW & AIRCRAFT CERTIFICATION REQUIRED



EMERG SAFE ALT 100 NM 10,900

KNOCK SKA (14)	CATET SKA (14)	PAIGE SKA (5.4) RADAR	7000 SKA R-047	FANOT SKA (2)	hdg 275°	SKA R-320	ELEV 2462	TDZE 2462
----------------	----------------	-----------------------	----------------	---------------	----------	-----------	-----------	-----------



CATEGORY	A	B	C	D	E	HIRL Rwy 5-23
S-ILS 5	RA 98/12		100	DA 2562		TDZL/CL Rwy 5

SPOKANE, WASHINGTON

47°37'N-117°39'W

FAIRCHILD AFB (KSKA)

Amtd 2 03NOV22

ILS RWY 5 (CAT II)

NW-1, 15 MAY 2025 to 12 JUN 2025

NW-1, 15 MAY 2025 to 12 JUN 2025