

(ZIASE5.ZIASE) 24025

ZIASE FIVE DEPARTURE

AL-548 (FAA)

SANTA FE RGNL (SAF)
SANTA FE, NEW MEXICO

ALBUQUERQUE CENTER
132.8 346.35
ATIS
128.55
GND CON
121.7
SANTA FE TOWER*
119.5 239.3

RADAR required.

**TOP ALTITUDE:
ASSIGNED BY ATC**

CAUTION: Mountainous terrain all quadrants.

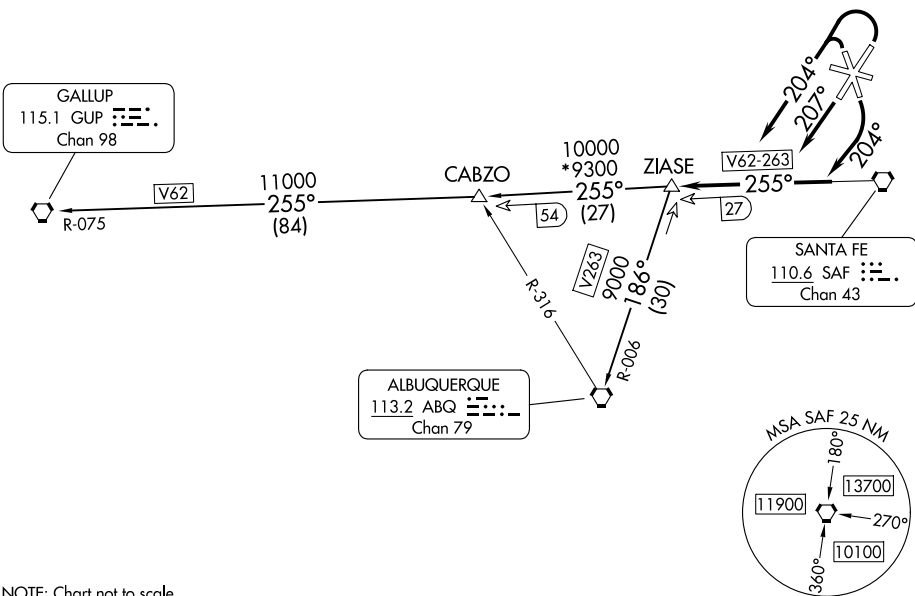
TAKEOFF MINIMUMS

Rwys 10, 28: NA - ATC.

Rwys 15, 20: Standard.

Rwy 2: Standard with minimum climb of 235' per NM to 8200.

Rwy 33: Standard with minimum climb of 310' per NM to 8200.



NOTE: Chart not to scale.

DEPARTURE ROUTE DESCRIPTION

TAKEOFF RUNWAYS 2, 33: Climbing left turn to heading 204° thence. . . .

TAKEOFF RUNWAY 15: Climbing right turn to heading 204° thence. . . .

TAKEOFF RUNWAY 20: Climb on heading 207° thence. . . .

. . . . intercept and proceed on SAF R-255 to ZIASE INT, then on assigned transition. Maintain ATC assigned altitude.

ALBUQUERQUE TRANSITION (ZIASE5.ABQ): From over ZIASE INT on ABQ R-006 to ABQ VORTAC.

GALLUP TRANSITION (ZIASE5.GUP): From over ZIASE INT on SAF R-255 and GUP R-075 to GUP VORTAC.

ZIASE FIVE DEPARTURE

(ZIASE5.ZIASE) 25JAN24

SANTA FE, NEW MEXICO
SANTA FE RGNL (SAF)

SW-1, 15 MAY 2025 to 12 JUN 2025

SW-1, 15 MAY 2025 to 12 JUN 2025