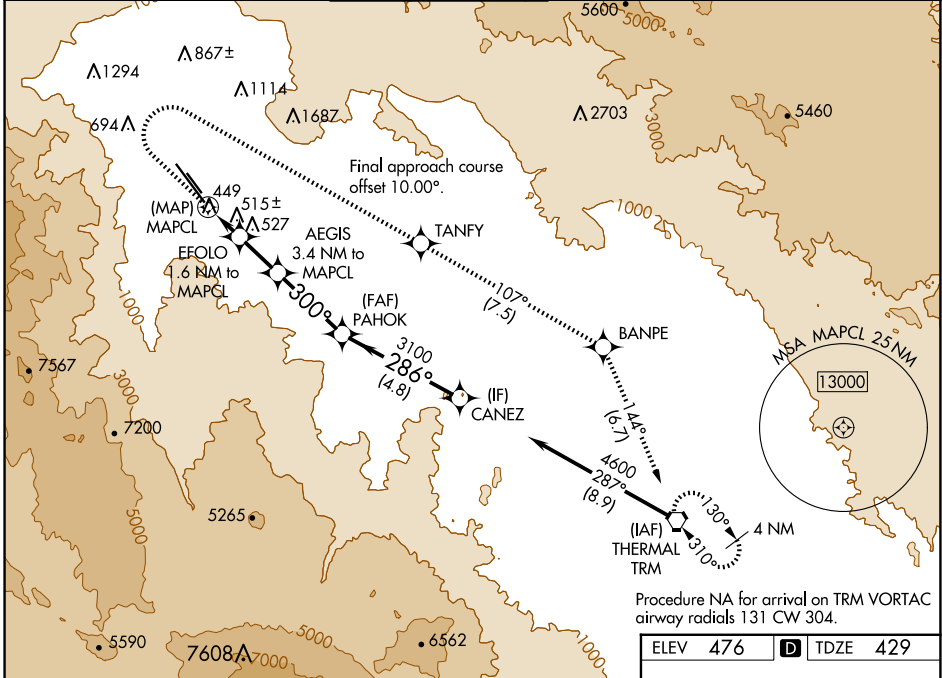


WAAS CH <b>50244</b> <b>W31A</b>	APP CRS <b>300°</b>	Rwy Idg TDZE Apt Elev	<b>8500</b> <b>429</b> <b>476</b>
--	------------------------	-----------------------------	---

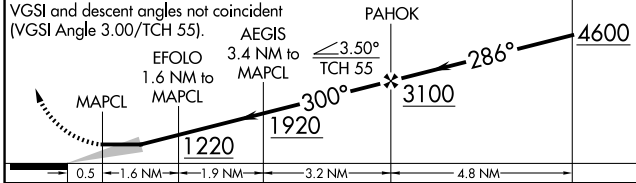
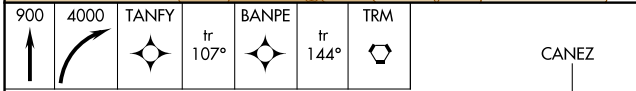
# RNAV (GPS) Z RWY 31L

PALM SPRINGS INTL (PSP)

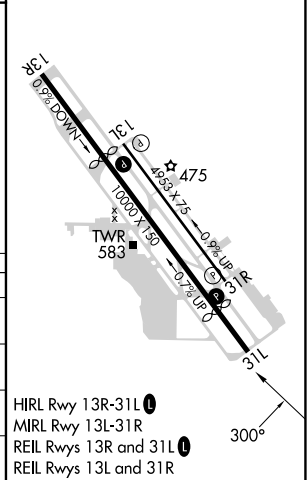
RNP APCH-GPS.		MISSED APPROACH: Climb to 900 then climbing right turn to 4000 direct TANFY and track 107° to BANPE and track 144° to TRM VORTAC and hold. *Missed approach requires minimum climb of 355 feet per NM to 2100.				
Circling NA southwest of Rwy 13R-31L.		PALM SPRINGS TOWER * <b>119.7 (CTAF) 0 377.05</b>		GND CON <b>121.9</b>	CLNC DEL <b>128.35</b>	UNICOM <b>122.95</b>
ATIS <b>124.65</b>	SOCAL APP CON <b>126.7 370.95</b> <b>135.275 251.1</b>					



ELEV 476	<b>D</b> TDZE 429
----------	-------------------



CATEGORY	A	B	C	D
LP MDA	700-1 271 (300-1)	780-1 351 (400-1)	1320-2½	891 (900-2½)
LNAV MDA*	780-1		351 (400-1)	
LNAV MDA	920-1 491 (500-1)	1180-1¼ 751 (800-1¼)	1440-3	1011 (1000-3)
<b>C</b> CIRCLING	920-1 444 (500-1)	1180-1¼ 704 (800-1¼)	1440-3 964 (1000-3)	1760-3 1284 (1300-3)



SW-3, 15 MAY 2025 to 12 JUN 2025

SW-3, 15 MAY 2025 to 12 JUN 2025

- HIRL Rwy 13R-31L
- MIRL Rwy 13L-31R
- REIL Rwys 13R and 31L
- REIL Rws 13L and 31R