

# RNAV (RNP) Z RWY 13R

PALM SPRINGS INTL (PSP)

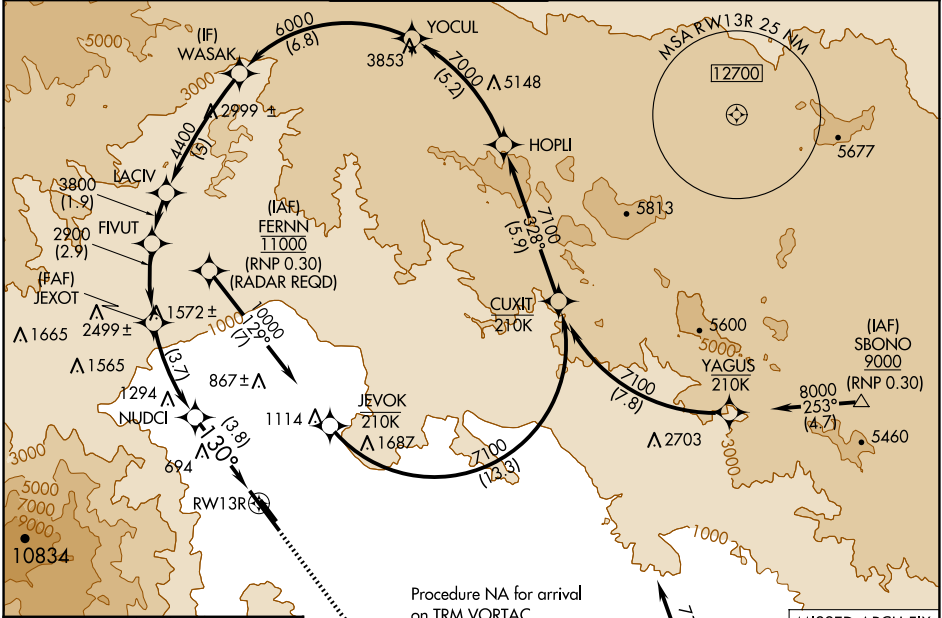
APP CRS	Rwy Idg	<b>6857</b>
<b>130°</b>	TDZE	<b>451</b>
	Apt Elev	<b>476</b>

RNP AR APCH, RF required.

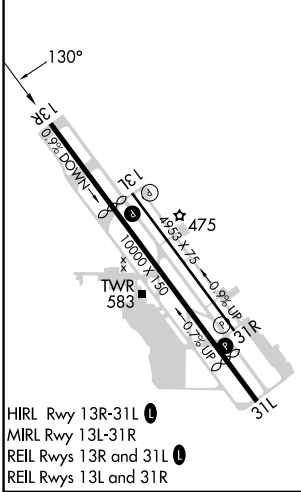
**⚠** For uncompensated Baro-VNAV systems, procedure NA below 1°C or above 54°C.

MISSED APPROACH: Climb to 900 then climbing left turn to 4000 direct TRM VORTAC and hold.

ATIS	SOCAL APP CON	PALM SPRINGS TOWER*	GND CON	CLNC DEL	UNICOM
<b>124.65</b>	<b>126.7 370.95</b> <b>135.275 251.1</b>	<b>119.7 (CTAF)</b> <b>377.05</b>	<b>121.9</b>	<b>128.35</b>	<b>122.95</b>



ELEV 476	<b>D</b>	TDZE 451
----------	----------	----------



HIRL Rwy 13R-31L **Ⓛ**  
 MIRL Rwy 13L-31R  
 REIL Rwy 13R and 31L **Ⓛ**  
 REIL Rwy 13L and 31R

Procedure NA for arrival on TRM VORTAC airway radials 263 CW 021.

(IAF) THERMAL TRM 9000 (RNP 0.30)

MISSED APCH FIX

THERMAL TRM 130° 4 NM

WASAK	VGSi and descent angles not coincident (VGSi Angle 3.00/TCH 47).			
6000	LACIV	FIVUT	JEXOT	NUDCI
	4400	3800	2900	1713
GP 3.00°				
TCH 45				
	5 NM	1.9 NM	2.9 NM	3.7 NM
				3.8 NM
CATEGORY	A	B	C	D
RNP 0.17 DA		812-1¼	361 (400-1¼)	
RNP 0.30 DA		882-1½	431 (500-1½)	

**AUTHORIZATION REQUIRED**

SW-3, 15 MAY 2025 to 12 JUN 2025

SW-3, 15 MAY 2025 to 12 JUN 2025