

APP CRS	Rwy Idg	8500
309°	TDZE	430
	Apt Elev	477

RNAV (RNP) Y RWY 31L

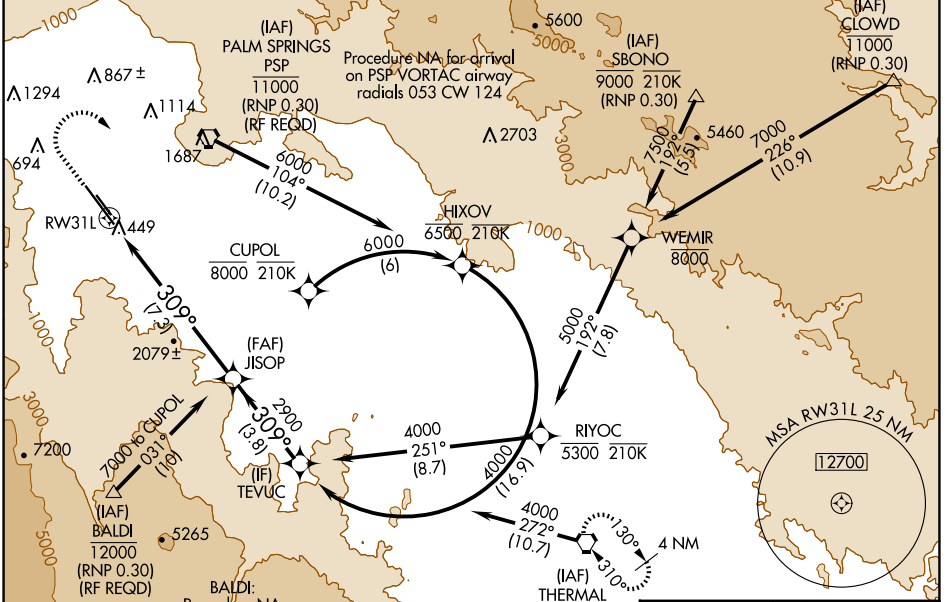
PALM SPRINGS INTL (PSP)

RNP AR APCH.

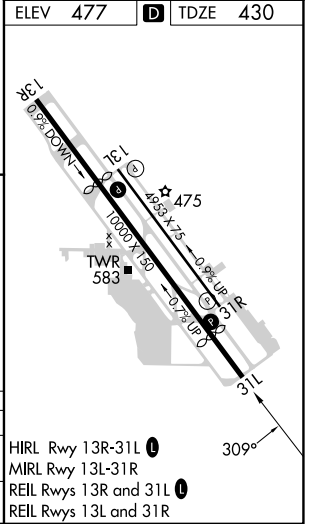
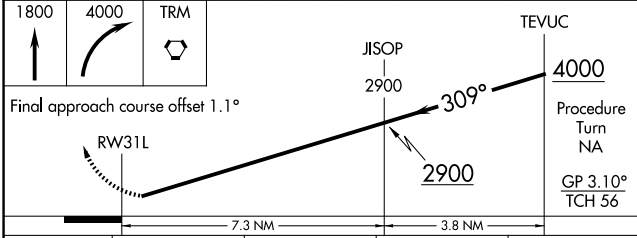
⚠ Missed approach requires minimum climb of 340' per NM to 3000. For uncompensated Baro-VNAV systems, procedure NA below 2°C or above 54°C.

MISSED APPROACH: Climb to 1800, then climbing right turn to 4000 direct TRM VORTAC and hold.

ATIS	SOCAL APP CON	PALM SPRINGS TOWER*	GND CON	CLNC DEL	UNICOM
124.65	126.7 370.95 135.275 251.1	119.7 (CTAF) 0 377.05	121.9	128.35	122.95



ELEV	477	D	TDZE	430
------	------------	----------	------	------------



CATEGORY	A	B	C	D
RNP 0.30 DA	734-1 304 (300-1)			

AUTHORIZATION REQUIRED

HIRL Rwy 13R-31L **Ⓛ**
 MIRL Rwy 13L-31R
 REL Rwy 13R and 31L **Ⓛ**
 REL Rwy 13L and 31R

SW-3, 15 MAY 2025 to 12 JUN 2025

SW-3, 15 MAY 2025 to 12 JUN 2025