

LOC/DME I- <b>EAR</b> <b>110.9</b> Chan <b>46</b>	APP CRS <b>002°</b>	Rwy Idg <b>7094</b> TDZE <b>2132</b> Apt Elev <b>2132</b>
---	------------------------	---

# ILS or LOC RWY 36

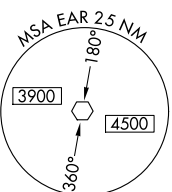
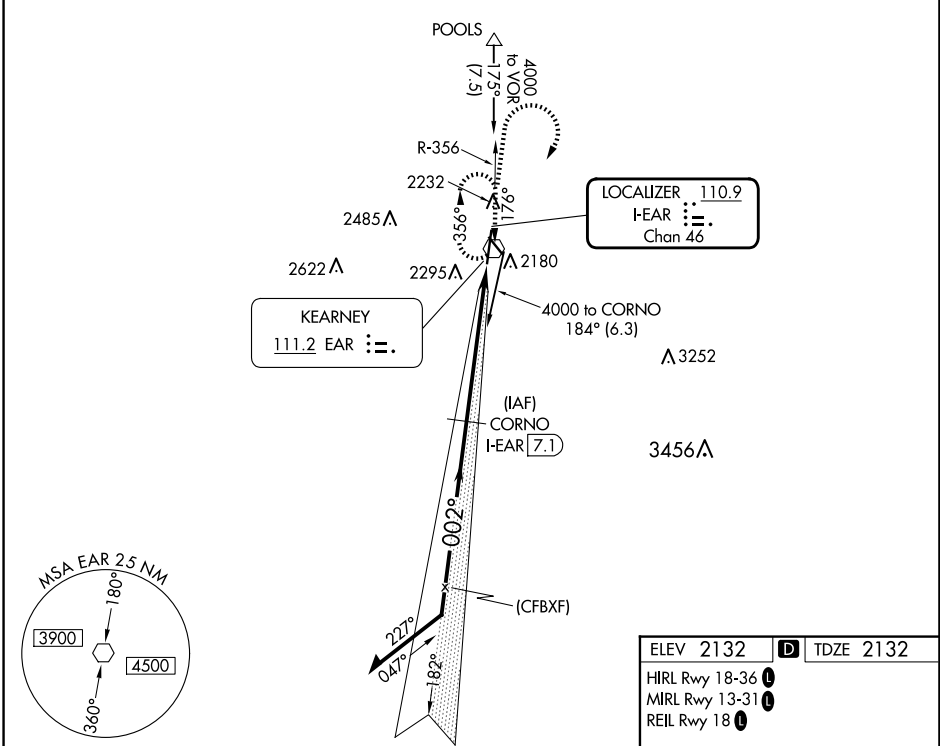
KEARNEY RGNL (EAR)

DME required.  
 NA

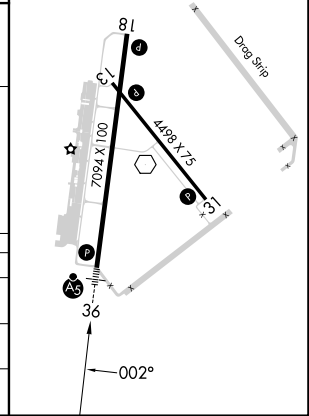
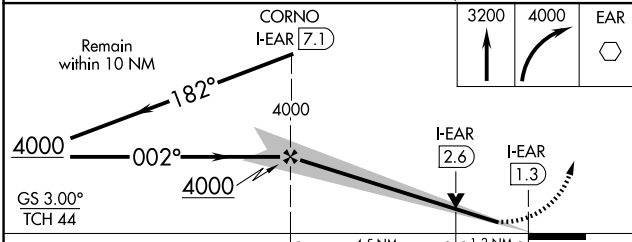
MALSR

MISSED APPROACH: Climb to 3200 then climbing right turn to 4000 direct EAR VOR and hold, continue climb-in-hold to 4000.

AWOS-3PT <b>123.875</b>	MINNEAPOLIS CENTER <b>119.4 278.8</b>	UNICOM <b>123.0 (CTAF) 1</b>
----------------------------	--	---------------------------------



ELEV 2132	<b>D</b> TDZE 2132
HIRL Rwy 18-36 <b>1</b>	
MIRL Rwy 13-31 <b>1</b>	
REIL Rwy 18 <b>1</b>	



CATEGORY	A	B	C	D
S-ILS 36	2332-½ 200 (200-½)			
S-LOC 36	2580-½ 448 (500-½)	2580-⅞ 448 (500-⅞)		
<b>C</b> CIRCLING	2600-1 468 (500-1)	2640-1½ 508 (600-1½)	2840-2¼ 708 (800-2¼)	

NC-2, 15 MAY 2025 to 12 JUN 2025

NC-2, 15 MAY 2025 to 12 JUN 2025