

LOC/DME I-JQX <b>108.9</b> Chan <b>26</b>	APP CRS <b>178°</b>	Rwy Idg <b>6499</b> TDZE <b>965</b> Apt Elev <b>978</b>
---	------------------------	---

# ILS or LOC RWY 18

JOPLIN RGNL (JLN)

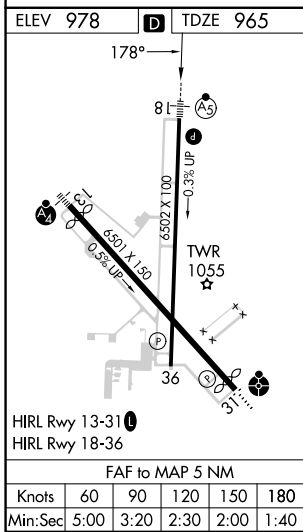
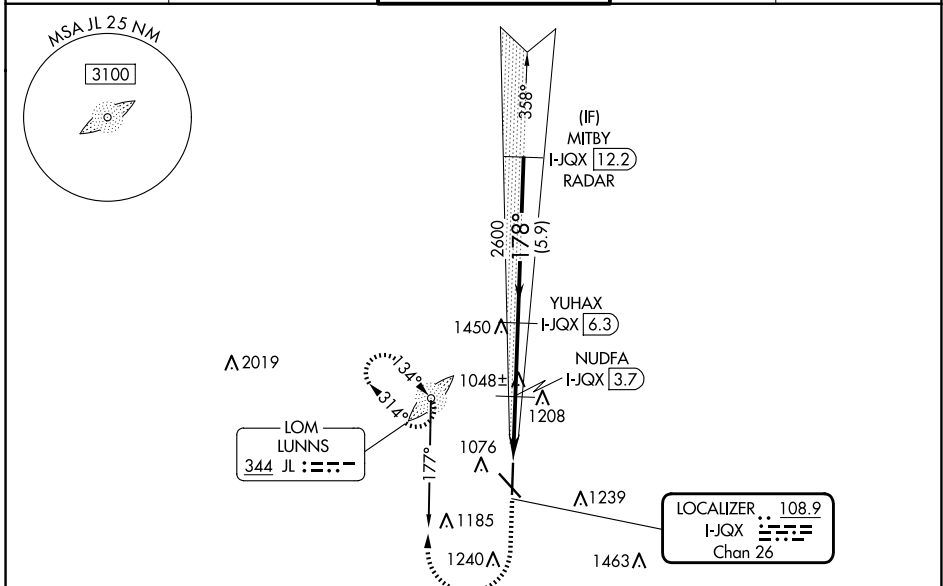
DME required for LOC only. ADF required. RADAR required for procedure entry.

- ⚠** Autopilot coupled approach NA below 1147.
- ⚠** For inop ALS, increase S-ILS 18 all Cats visibility to RVR 4500 and S-LOC 18 Cat C/D visibility to RVR 5500.



MISSED APPROACH: Climb to 1460 then climbing right turn to 3100 on LUNNS LOM bearing 177° to LUNNS LOM and hold, continue climb-in-hold to 3100. S-ILS 18\* missed approach requires minimum climb of 204 feet per NM to 2240. (If unable to meet climb gradient use S-ILS 18 minimums).

ATIS <b>120.85</b>	KANSAS CITY CENTER <b>128.6 282.325</b>	JOPLIN TOWER* <b>119.8 (CTAF) 1</b>	GND CON <b>121.6</b>	UNICOM <b>122.95</b>
-----------------------	--	--	-------------------------	-------------------------



	1460	3100	JL	MITBY
			JL 177°	I-JQX 12.2 RADAR
				YUHAX I-JQX 6.3
				NUDFA I-JQX 3.7
				2600
				3100
				GS 3.00° TCH 46
	1.1 NM	1.3 NM	2.6 NM	5.9 NM
CATEGORY	A	B	C	D
S-ILS 18*	1165/24 200 (200-1/2)			
S-ILS 18	1240/24 275 (300-1/2)			
S-LOC 18	1340/24	375 (400-1/2)	1340/35	375 (400-5/8)
<b>C</b> CIRCLING	1420-1 442 (500-1)	1480-1 502 (600-1)	1540-1 3/4 562 (600-1 3/4)	1600-2 622 (700-2)

NC-3, 15 MAY 2025 to 12 JUN 2025

NC-3, 15 MAY 2025 to 12 JUN 2025