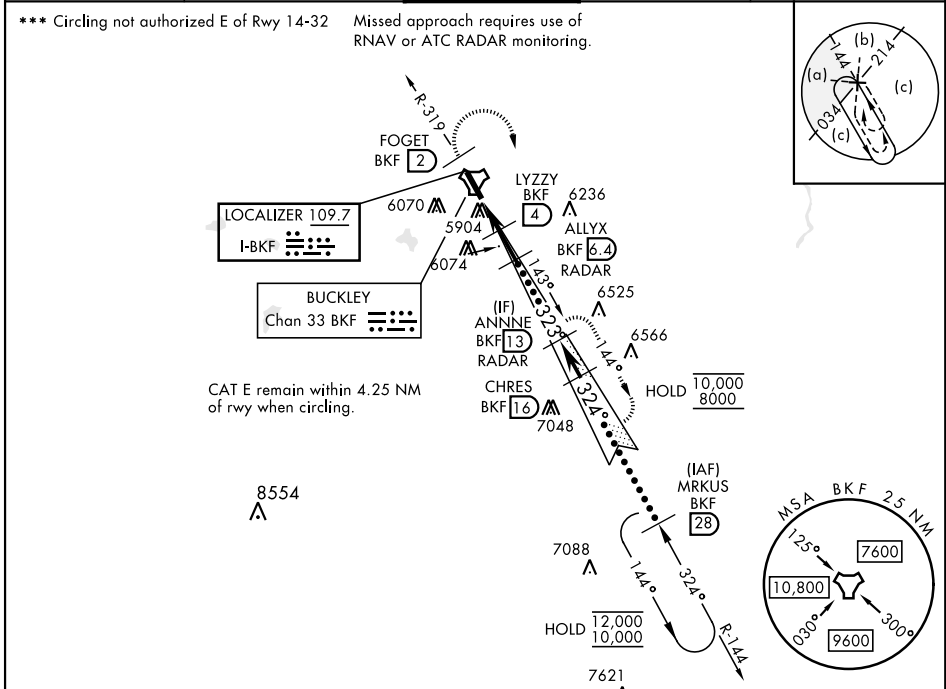


HI-ILS or LOC/DME RWY 32

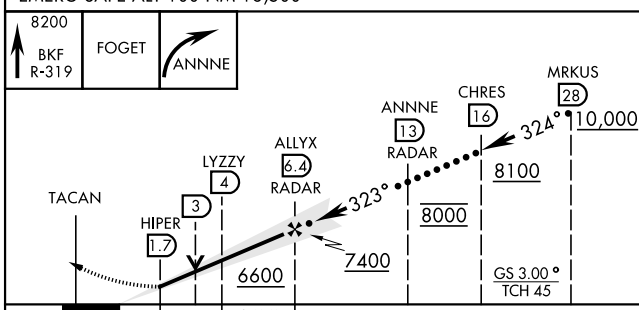
LOC I-BKF 109.7	APCH CRS 323°	Rwy ldg 11,006 TDZE 5663 Arprt Elev 5663	AL-538 [USAF]	BUCKLEY SFB (KBKF)
---------------------------	-------------------------	---	---------------	--------------------

▲ * When ALS inop, increase CAT CDE RVR to 40 and vis to $\frac{3}{4}$ miles.
****** When ALS inop, increase CAT CDE vis to $1\frac{1}{4}$ miles.

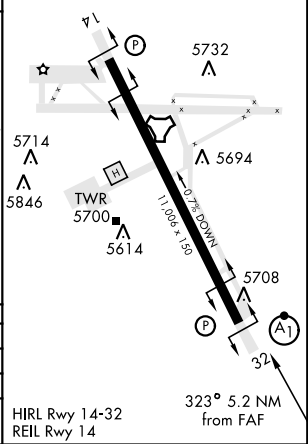
ATIS ★ 119.675 259.3	DENVER APP CON 128.45 251.075	TOWER ★ 121.0 291.675	GND CON 121.6 275.8	CLNC DEL 121.6 275.8
--------------------------------	---	---------------------------------	-------------------------------	--------------------------------



EMERG SAFE ALT 100 NM 16,500	ELEV 5663	TDZE 5663
------------------------------	-----------	-----------



8200 BKF R-319	FOGET	ANNNE	
TACAN	HIPER 1.7	LYZZY 4	
	ALLYX 6.4	ANNNE 13	
	CHRES 16	MRKUS 28	
		10,000	
		8100	
		8000	
		7400	
		6600	
		GS 3.00°	
		TCH 45	
CATEGORY	C	D	E
S-ILS 32*	5863/24	200	(200-1/2)
S-LOC 32**	6280-13/8	617	(700-13/8)
CIRCLING ***	6360-2 697 (700-2)	6400-2 1/4 737 (800-2 1/4)	6420-2 3/4 757 (800-2 3/4)



HI-ILS or LOC/DME RWY 32

SW-1, 15 MAY 2025 to 12 JUN 2025

SW-1, 15 MAY 2025 to 12 JUN 2025