

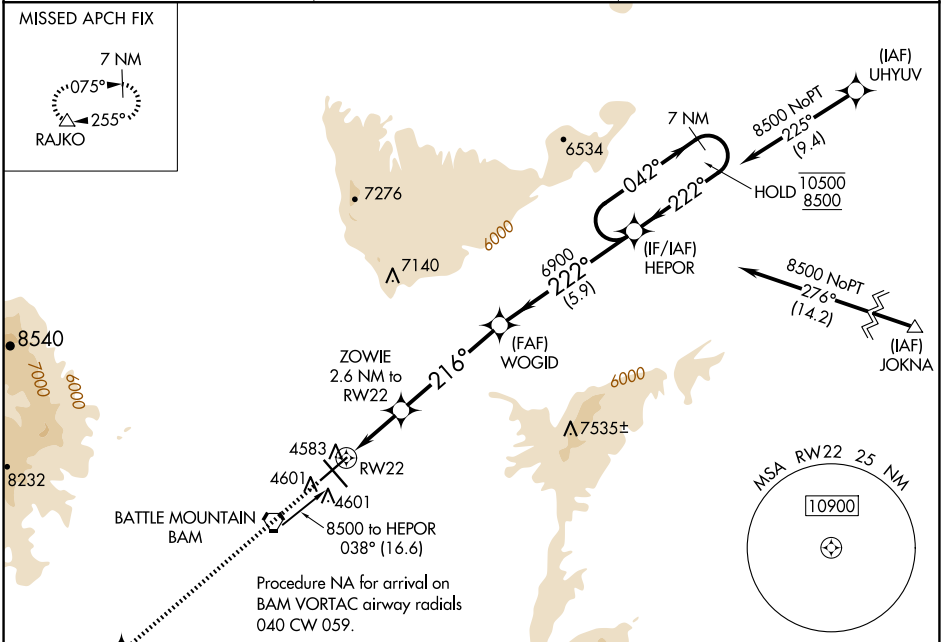
WAAS CH <b>82741</b> <b>W22A</b>	APP CRS <b>216°</b>	Rwy Idg <b>7300</b> TDZE <b>4533</b> Apt Elev <b>4536</b>
--	------------------------	---

# RNAV (GPS) RWY 22

BATTLE MOUNTAIN (BAM)

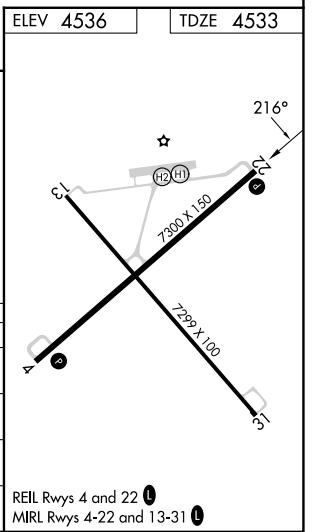
RNP APCH. Baro-VNAV NA.	MISSED APPROACH: Climb to 11900 direct OQSUL and track 251° to RAJKO and hold, continue climb-in-hold to 11900.
----------------------------	---

AWOS-3 <b>119.45</b>	SALT LAKE CITY CENTER <b>132.25 338.35</b>	UNICOM <b>122.8</b> (CTAF) <b>0</b>
-------------------------	---	--



ELEV 4536	TDZE 4533
-----------	-----------

11900 OQSUL	RAJKO	VGSI and RNAV glidepath not coincident (VGSI Angle 3.00/TCH 51).	7 NM Holding Pattern
↑ 251°	△		
*LNAV only.			
ZOWIE 2.6 NM to RW22			
*0.8 NM to RW22			
RW22			
WOGID 6900			
HEPOR 10500/8500			
042° → 10500			
← 222° 8500			
216°			
5400*			
6900			
GP 3.00°			
TCH 51			
0.8 NM   1.8 NM   4.7 NM   5.9 NM			



CATEGORY	A	B	C	D
LPV DA		4753-1	220 (300-1)	
LNAV/VNAV DA		4808-1	275 (300-1)	
LNAV MDA	4980-1	447 (500-1)	4980-1 <sup>3</sup> / <sub>8</sub>	447 (500-1 <sup>3</sup> / <sub>8</sub> )
CIRCLING	4980-1 444 (500-1)	5000-1 464 (500-1)	5000-1 <sup>1</sup> / <sub>2</sub> 464 (500-1 <sup>1</sup> / <sub>2</sub> )	5460-3 924 (1000-3)

REIL Rwys 4 and 22 **0**  
MRL Rwys 4-22 and 13-31 **0**

SW-4, 15 MAY 2025 to 12 JUN 2025

SW-4, 15 MAY 2025 to 12 JUN 2025