

WAAS CH 62801 W14A	APP CRS 136°	Rwy Idg TDZE Apt Elev	5601 205 222
--	------------------------	-----------------------------	---

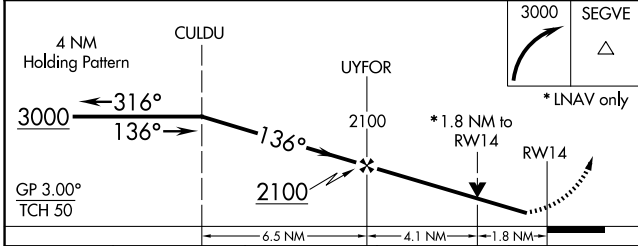
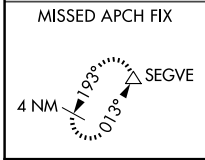
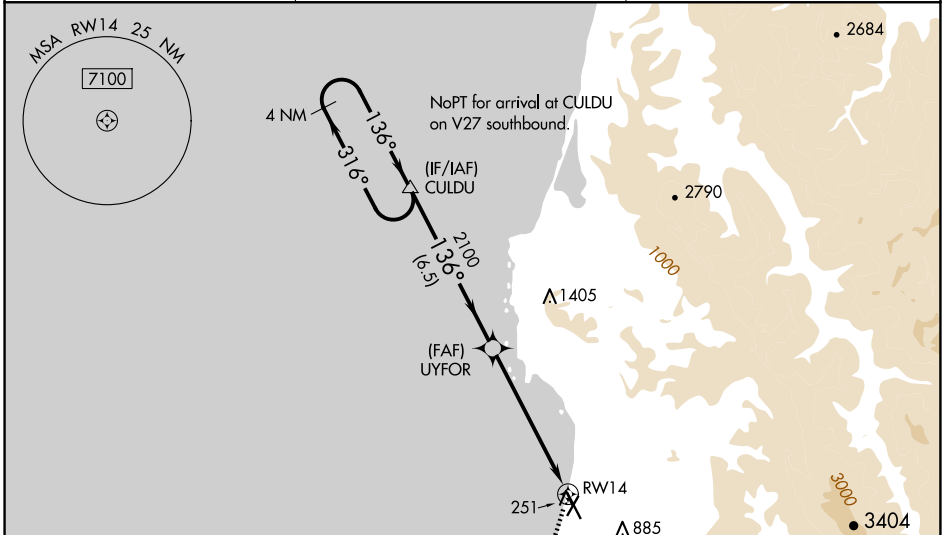
RNAV (GPS) RWY 14

CALIFORNIA REDWOOD COAST-HUMBOLDT COUNTY (ACT)

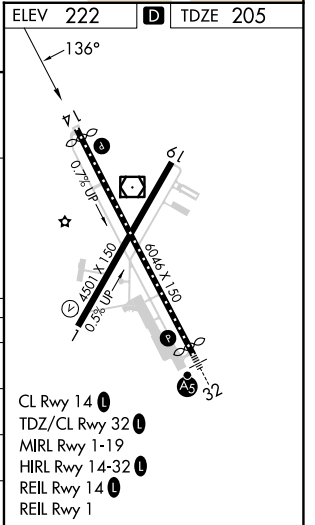
For uncompensated Baro-VNAV systems, LNAV/VNAV NA below -2°C (29°F) or above 54°C (130°F). Circling NA northeast of Rwy 14-32. DME/DME RNP-0.3 NA. Rwy 14 helicopter visibility reduction below ¾ SM NA.

MISSED APPROACH: Climbing right turn to 3000 direct SEGVE and hold.

ASOS 118.525	SEATTLE CENTER 124.85 306.3	UNICOM 123.0 (CTAF) 0
------------------------	---------------------------------------	---------------------------------



CATEGORY	A	B	C	D
LPV DA	455/45 250 (300-¾)			
LNAV/VNAV DA	570-1¼ 365 (400-1¼)			
LNAV MDA	820/55	615 (600-1)	820-1¾ 615 (600-1¾)	
C CIRCLING	820-1	598 (600-1)	840-1¾ 618 (700-1¾)	880-2 658 (700-2)



SW-2, 15 MAY 2025 to 12 JUN 2025

SW-2, 15 MAY 2025 to 12 JUN 2025