

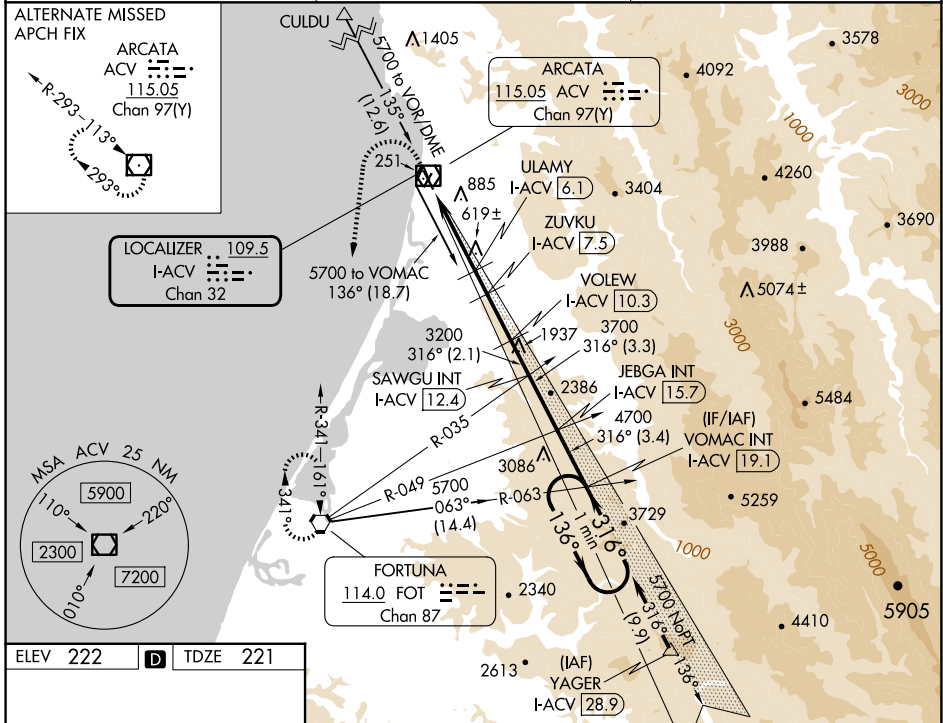
LOC/DME I-ACV <b>109.5</b> Chan <b>32</b>	APP CRS <b>316°</b>	Rwy Idg TDZE Apt Elev	<b>5846</b> <b>221</b> <b>222</b>
---	------------------------	-----------------------------	---

# ILS or LOC RWY 32

CALIFORNIA REDWOOD COAST-HUMBOLDT COUNTY (ACV)

<p><b>NA</b> Circling NA northeast of Rwy 14-32. DME required.</p>	<p><b>MALSR</b></p>	<p><b>MISSED APPROACH:</b> Climb to 800 then climbing left turn to 3000 direct FOT VORTAC and hold.</p>
--	---------------------	---

<p><b>ASOS</b> <b>118.525</b></p>	<p><b>SEATTLE CENTER</b> <b>124.85 306.3</b></p>	<p><b>UNICOM</b> <b>123.0 (CTAF)</b></p>
---------------------------------------	--	--



ELEV 222 **D** TDZE 221

CL Rwy 14 **1**  
TDZ/CL Rwy 32 **1**  
MIRL Rwy 1-19 **1**  
HIRL Rwy 14-32 **1**  
REIL Rwy 14 **1**  
REIL Rwy 1

800 3000 FOT

Use I-ACV DME when on the localizer course.  
VGSI and ILS glidepath not coincident (VGSI Angle 3.00/TCH 43).

VOMAC I-ACV 19.1 One Minute Holding Pattern

\*LOC only

ULAMY I-ACV 6.1  
ZUVKU I-ACV 7.5  
VOLEW I-ACV 10.3  
SAWGU I-ACV 12.4  
JEBGA I-ACV 15.7

I-ACV 1.1, I-ACV 3, I-ACV 6.1, I-ACV 7.5, I-ACV 10.3, I-ACV 12.4, I-ACV 15.7

1860\*, 2320\*, 3200, 3700, 4700

136° → ← 316° 5700

GS 3.00° TCH 47

CATEGORY	A	B	C	D
S-ILS 32	441/18 220 (300-1/2)			
S-LOC 32	880/24	659 (700-1/2)	880-1 3/8	659 (700-1 3/8)
<b>C</b> CIRCLING	880-1	658 (700-1)	880-1 7/8	880-2 658 (700-1 7/8)

SW-2, 15 MAY 2025 to 12 JUN 2025

SW-2, 15 MAY 2025 to 12 JUN 2025