

(HOCUT5.HOCUT) 23334
HOCUT FIVE DEPARTURE

CALIFORNIA REDWOOD COAST-HUMBOLDT COUNTY (ACV)
 AL-519 (FAA)
 ARCATA/EUREKA, CALIFORNIA

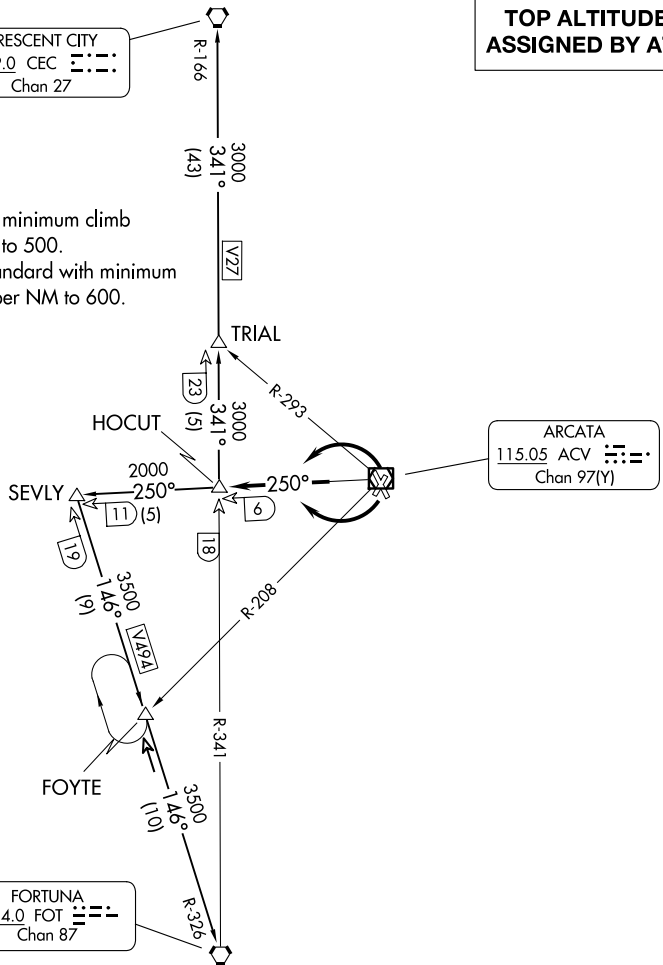
OAKLAND FSS
 122.6
 SEATTLE CENTER
 124.85 306.3

CRESCENT CITY
 109.0 CEC
 Chan 27

**TOP ALTITUDE:
 ASSIGNED BY ATC**

TAKEOFF MINIMUMS

Rwy 19, 32: Standard.
 Rwy 1: Standard with a minimum climb
 of 360' per NM to 500.
 Rwy 14: 400-2 1/2 or standard with minimum
 climb of 382' per NM to 600.



ARCATA
 115.05 ACV
 Chan 97(Y)

FORTUNA
 114.0 FOT
 Chan 87

SW-2, 15 MAY 2025 to 12 JUN 2025

SW-2, 15 MAY 2025 to 12 JUN 2025

NOTE: Chart not to scale.



DEPARTURE ROUTE DESCRIPTION

TAKEOFF RUNWAYS 1 and 32: Climbing left turn on ACV R-250, thence. . . .
TAKEOFF RUNWAYS 14 and 19: Climbing right turn on ACV R-250, thence. . . .
on (transition) or (assigned route).
CRESCENT CITY TRANSITION (HOCUT5.CEC): From over HOCUT INT on FOT R-341
 and CEC R-166 to CEC VORTAC.
FORTUNA TRANSITION (HOCUT5.FOT): From over HOCUT INT on ACV R-250 to
 SEVLY INT, then via FOT R-326 to FOT VORTAC.

HOCUT FIVE DEPARTURE
 (HOCUT5.HOCUT) 12OCT17

ARCATA/EUREKA, CALIFORNIA
 CALIFORNIA REDWOOD COAST-HUMBOLDT COUNTY (ACV)