

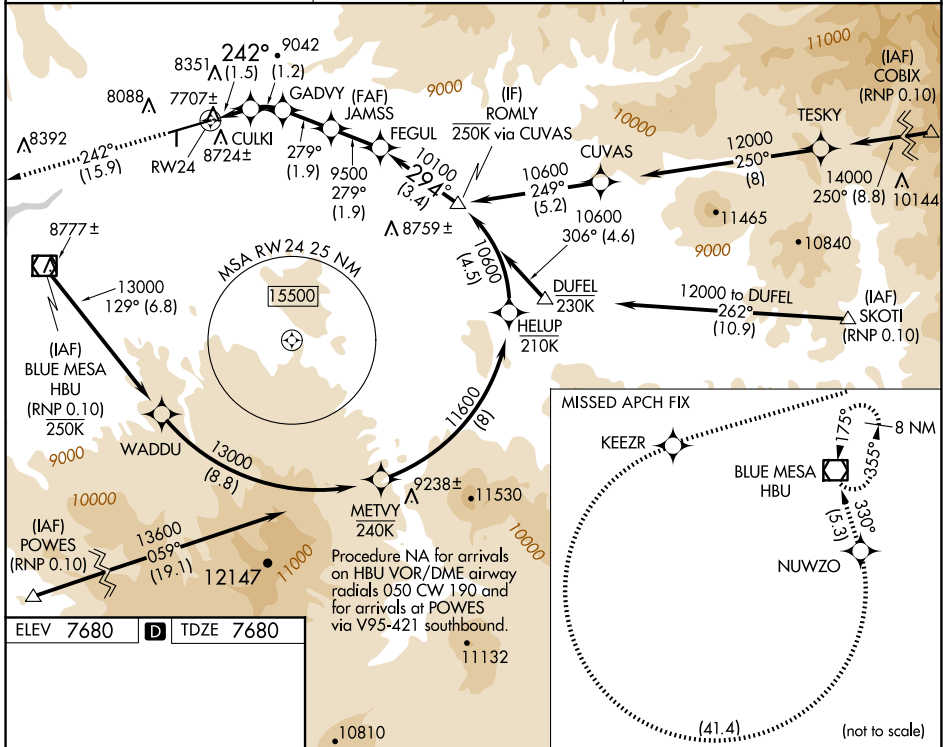
APP CRS	Rwy Idg	<b>9400</b>
<b>242°</b>	TDZE	<b>7680</b>
	Apt Elev	<b>7680</b>

# RNAV (RNP) RWY 24

GUNNISON-CRESTED BUTTE RGNL (GUC)

RNP AR APCH - GPS, RF, min RNP 0.10. Authorization required.	MISSED APPROACH: Climb to 14000 on track 242° to KEEZR, and left turn to NUWZO, and on track 330° to HBU VOR/DME and hold. Missed approach requires minimum climb of 425 feet per NM to 9000.
<p>▼ When local altimeter setting not received, procedure NA.</p> <p>❄ -26°C Procedure NA for aircraft with wingspan greater than 136 feet. For uncompensated Baro-VNAV systems, procedure NA below -29°C or above 24°C.</p>	

AWOS-3PT <b>135.075</b>	DENVER CENTER <b>124.5 350.25</b>	UNICOM <b>122.7 (CTAF) 0</b>
----------------------------	--------------------------------------	---------------------------------



ELEV 7680	<b>D</b>	TDZE 7680
-----------	----------	-----------

HIRL Rwy 6-24  
REIL Rwy 24

14000	KEEZR	NUWZO	VGSI and RNAV glidepath not coincident (VGSI Angle 3.60/TCH 71).		ROMLY
tr 242°			JAMSS	FEGUL	
	CULKI	GADVY	9500	10100	10600
	8320	8776	279°	294°	Procedure Turn NA GP 3.60° TCH 65
			9500		
	-1.5 NM -1.2 NM -1.9 NM		1.9 NM	3.4 NM	
CATEGORY	A		B	C	D
RNP 0.10 DA	8029-1		349 (400-1)		NA

## AUTHORIZATION REQUIRED

SW-1, 15 MAY 2025 to 12 JUN 2025

SW-1, 15 MAY 2025 to 12 JUN 2025