

(TAQLE.TAQLE2) 23278

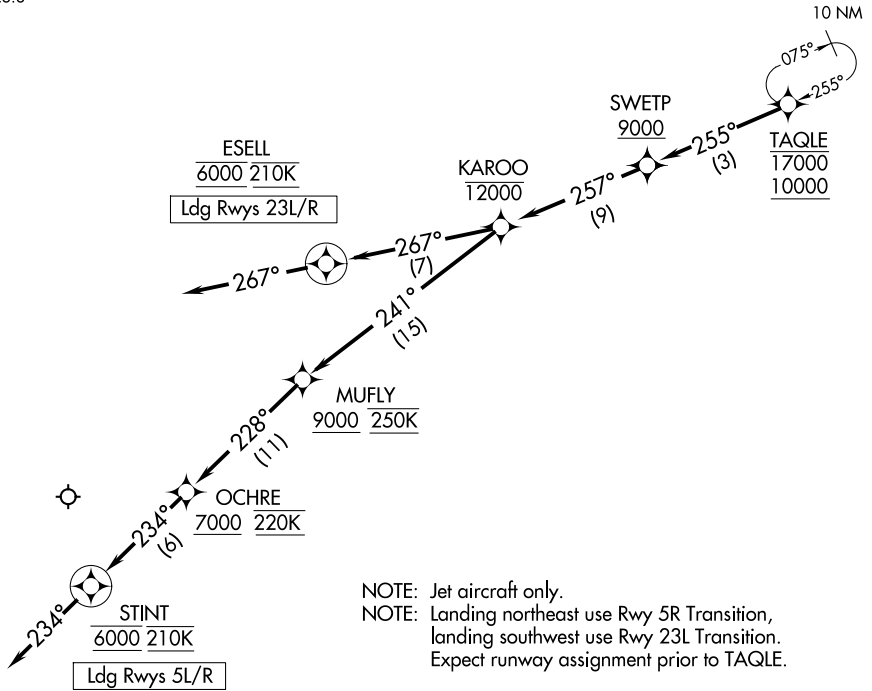
AL-516 (FAA)

RALEIGH-DURHAM INTL (RDU)
RALEIGH/DURHAM, NORTH CAROLINA

TAQLE TWO ARRIVAL (RNAV) Arrival Routes

RALEIGH APP CON
124.95 318.2
D-ATIS
123.8

RNAV 1 - DME/DME/IRU or GPS
RADAR required



NOTE: Jet aircraft only.
NOTE: Landing northeast use Rwy 5R Transition, landing southwest use Rwy 23L Transition. Expect runway assignment prior to TAQLE.

NOTE: Chart not to scale.

ARRIVAL ROUTE DESCRIPTION

From TAQLE on track 255° to cross SWETP at or above 9000, then on track 257° to cross KAROO at or below 12000.

LANDING RUNWAYS 5L/R: From KAROO on track 241° to cross MUFLY at or above 9000 and at 250K, then on track 228° to cross OCHRE at or above 7000 and at 220K, then on track 234° to cross STINT at 6000 and at 210K, then on track 234°. Expect RNP RWY 5R approach. Non-RNP aircraft: Expect RADAR vectors to final approach course.

LANDING RUNWAYS 23L/R: From KAROO on track 267° to cross ESELL at 6000 and at 210K, then on track 267°. Expect ILS or RNAV RWY 23L/R approach.

TAQLE TWO ARRIVAL (RNAV) Arrival Routes
(TAQLE.TAQLE2) 05OCT23

RALEIGH/DURHAM, NORTH CAROLINA
RALEIGH-DURHAM INTL (RDU)

SE-2, 15 MAY 2025 to 12 JUN 2025

SE-2, 15 MAY 2025 to 12 JUN 2025