

(TAQLE.TAQLE2) 23278

AL-516 (FAA)

RALEIGH-DURHAM INTL (RDU)
RALEIGH/DURHAM, NORTH CAROLINA

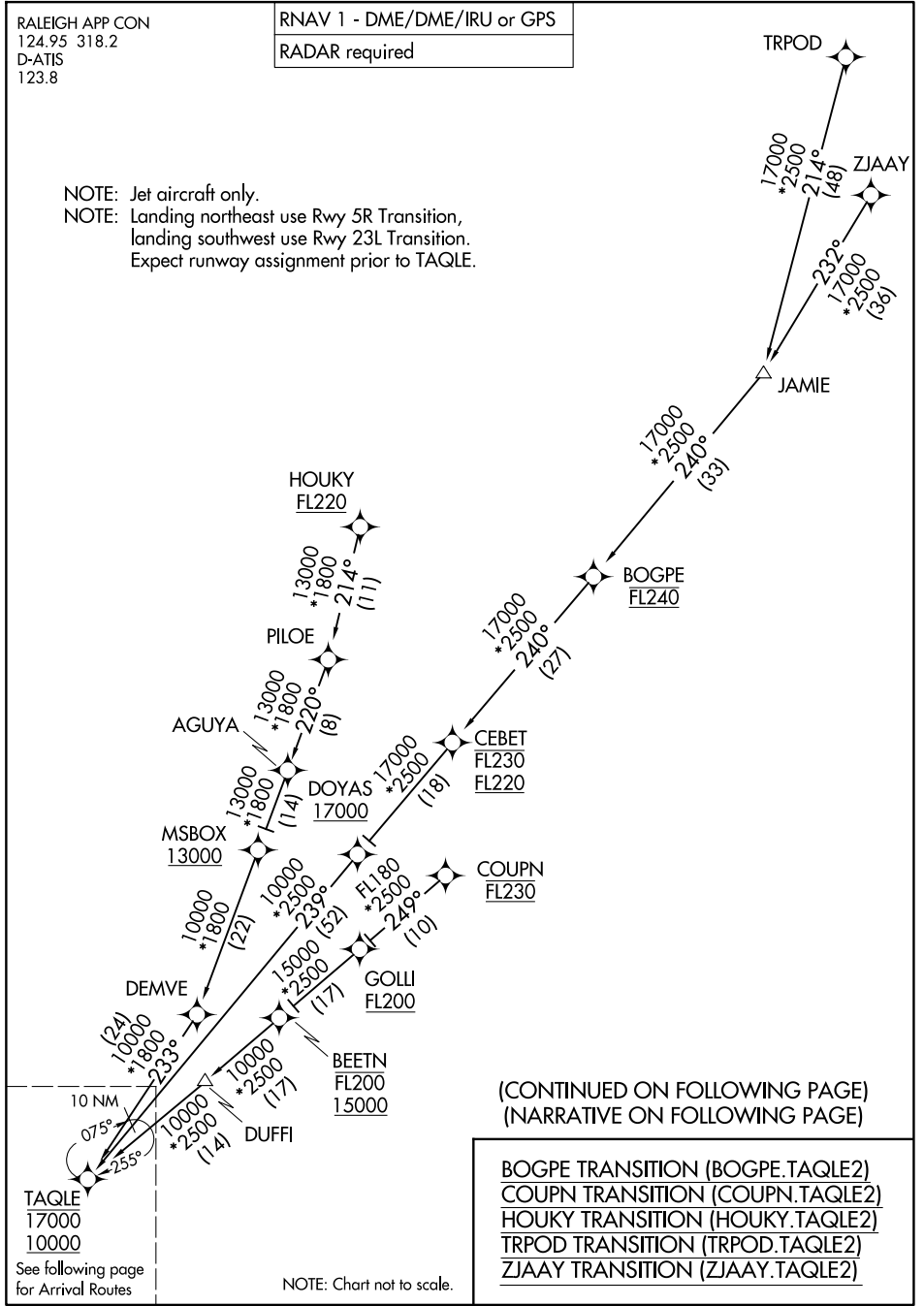
TAQLE TWO ARRIVAL (RNAV) Transition Routes

RALEIGH APP CON
124.95 318.2
D-ATIS
123.8

RNAV 1 - DME/DME/IRU or GPS

RADAR required

NOTE: Jet aircraft only.
NOTE: Landing northeast use Rwy 5R Transition,
landing southwest use Rwy 23L Transition.
Expect runway assignment prior to TAQLE.



(CONTINUED ON FOLLOWING PAGE)
(NARRATIVE ON FOLLOWING PAGE)

- BOGPE TRANSITION (BOGPE.TAQLE2)
- COUPN TRANSITION (COUPN.TAQLE2)
- HOUKY TRANSITION (HOUKY.TAQLE2)
- TRPOD TRANSITION (TRPOD.TAQLE2)
- ZJAAY TRANSITION (ZJAAY.TAQLE2)

NOTE: Chart not to scale.

See following page
for Arrival Routes

SE-2, 15 MAY 2025 to 12 JUN 2025

SE-2, 15 MAY 2025 to 12 JUN 2025

TAQLE TWO ARRIVAL (RNAV) Transition Routes
(TAQLE.TAQLE2) 05OCT23

RALEIGH/DURHAM, NORTH CAROLINA
RALEIGH-DURHAM INTL (RDU)