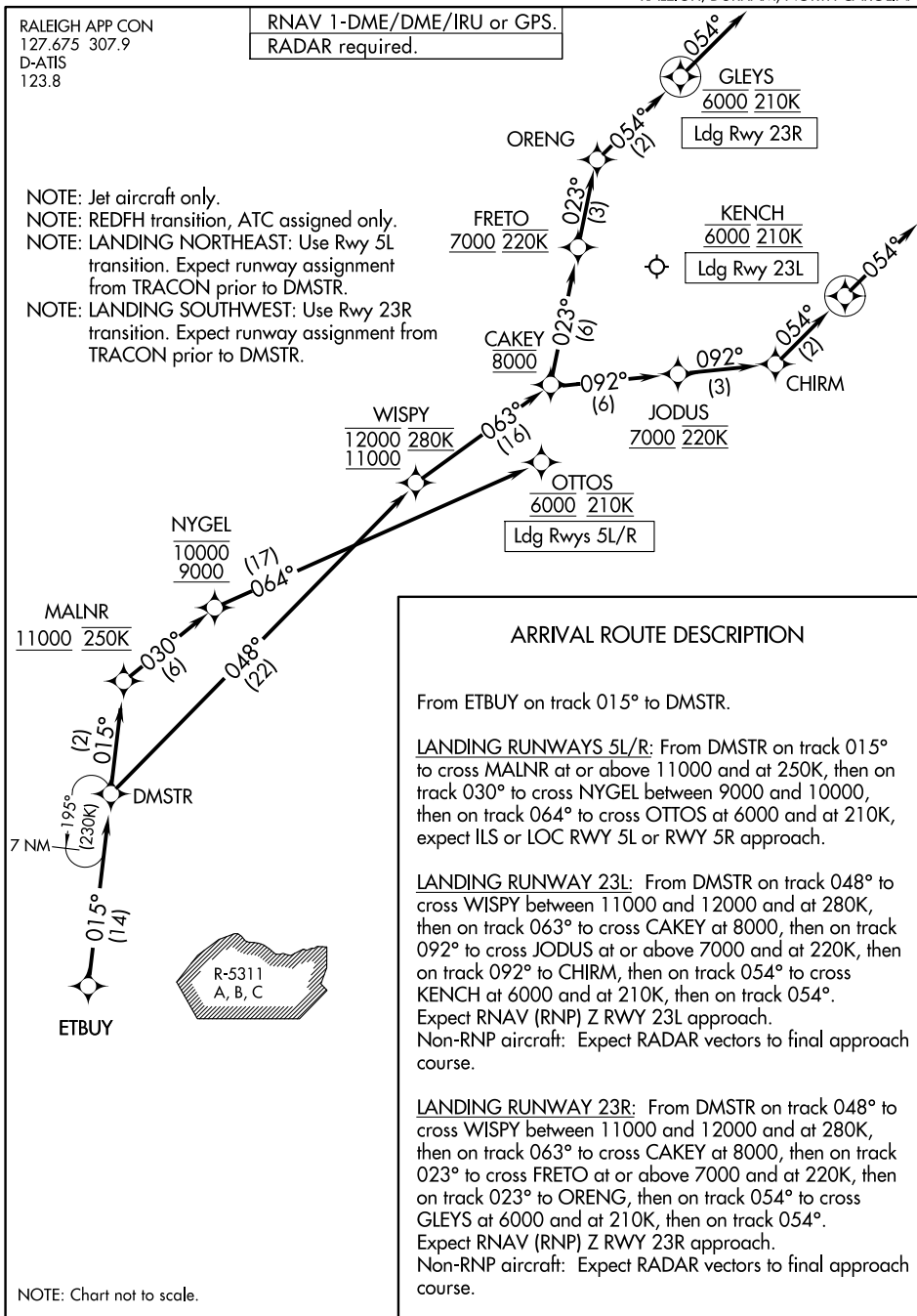


DMSTR TWO ARRIVAL(RNAV) Arrival Routes

RALEIGH APP CON
127.675 307.9
D-ATIS
123.8

RNAV 1-DME/DME/IRU or GPS.
RADAR required.

NOTE: Jet aircraft only.
NOTE: REDFH transition, ATC assigned only.
NOTE: LANDING NORTHEAST: Use Rwy 5L transition. Expect runway assignment from TRACON prior to DMSTR.
NOTE: LANDING SOUTHWEST: Use Rwy 23R transition. Expect runway assignment from TRACON prior to DMSTR.



ARRIVAL ROUTE DESCRIPTION

From ETBUY on track 015° to DMSTR.

LANDING RUNWAYS 5L/R: From DMSTR on track 015° to cross MALNR at or above 11000 and at 250K, then on track 030° to cross NYGEL between 9000 and 10000, then on track 064° to cross OTTOS at 6000 and at 210K, expect ILS or LOC RWY 5L or RWY 5R approach.

LANDING RUNWAY 23L: From DMSTR on track 048° to cross WISPY between 11000 and 12000 and at 280K, then on track 063° to cross CAKEY at 8000, then on track 092° to cross JODUS at or above 7000 and at 220K, then on track 092° to CHIRM, then on track 054° to cross KENCH at 6000 and at 210K, then on track 054°. Expect RNAV (RNP) Z RWY 23L approach.
Non-RNP aircraft: Expect RADAR vectors to final approach course.

LANDING RUNWAY 23R: From DMSTR on track 048° to cross WISPY between 11000 and 12000 and at 280K, then on track 063° to cross CAKEY at 8000, then on track 023° to cross FRETO at or above 7000 and at 220K, then on track 023° to ORENG, then on track 054° to cross GLEYS at 6000 and at 210K, then on track 054°. Expect RNAV (RNP) Z RWY 23R approach.
Non-RNP aircraft: Expect RADAR vectors to final approach course.

NOTE: Chart not to scale.

SE-2, 15 MAY 2025 to 12 JUN 2025

SE-2, 15 MAY 2025 to 12 JUN 2025