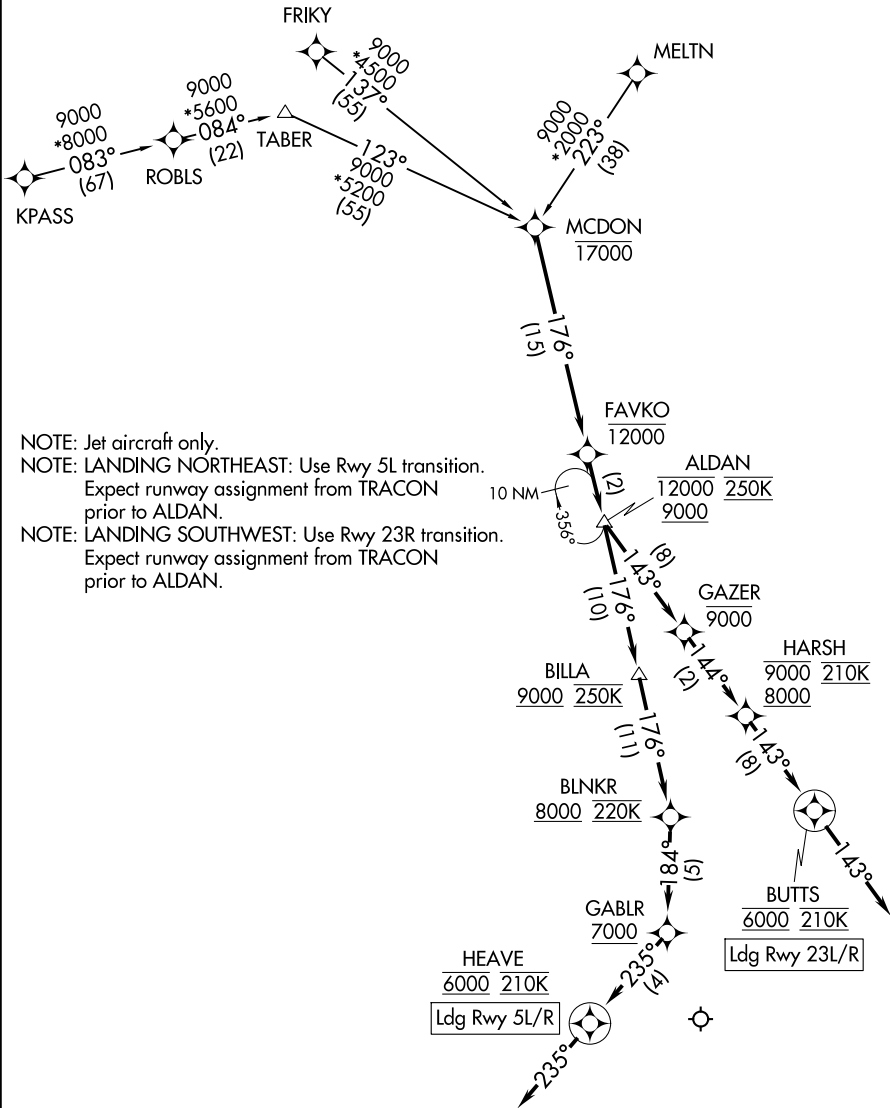


ALDAN FOUR ARRIVAL (RNAV)

RALEIGH APP CON
127.675 307.9
D-ATIS
123.8

RNAV 1 - DME/DME IRU or GPS.
RADAR required.



NOTE: Jet aircraft only.
 NOTE: LANDING NORTHEAST: Use Rwy 5L transition. Expect runway assignment from TRACON prior to ALDAN.
 NOTE: LANDING SOUTHWEST: Use Rwy 23R transition. Expect runway assignment from TRACON prior to ALDAN.

SE-2, 15 MAY 2025 to 12 JUN 2025

SE-2, 15 MAY 2025 to 12 JUN 2025

(CONTINUED ON FOLLOWING PAGE)

NOTE: Chart not to scale.

ALDAN FOUR ARRIVAL (RNAV)

(MCDON.ALDAN4) 25JAN24