

RNAV (RNP) Z RWY 12

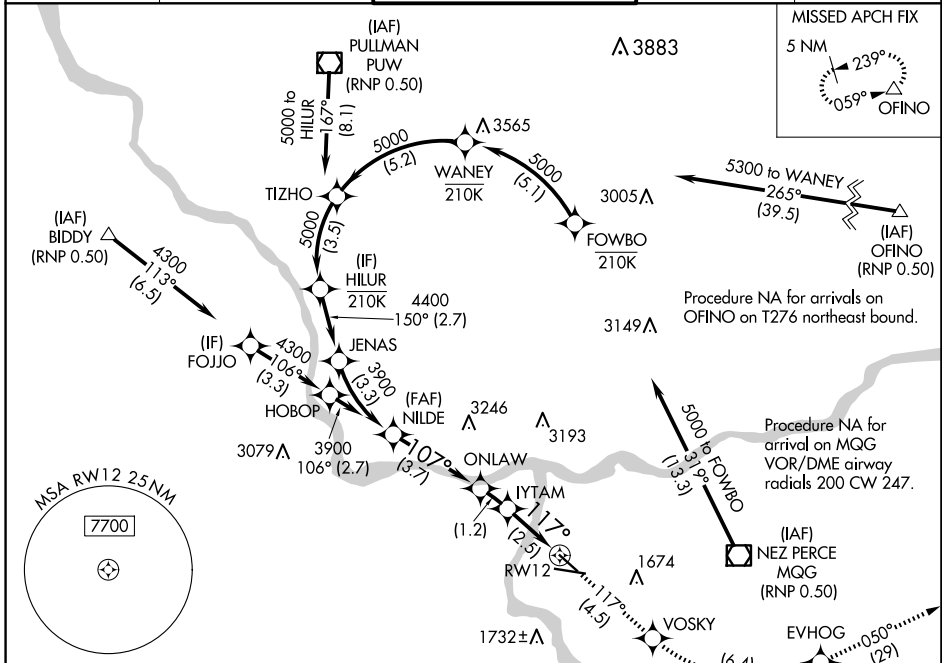
LEWISTON/NEZ PERCE COUNTY (LWS)

APP CRS	Rwy Idg	4750
117°	TDZE	1417
	Apt Elev	1442

RNP AR APCH-GPS.
 ▼ For uncompensated Baro-VNAV systems, procedure NA below -12°C or above 54°C.

MISSED APPROACH: Climb to 6000 on track 117° to VOSKY then left turn 6000 to EVHOG and on track 050° to OFINO and hold.
 *Missed approach requires minium climb of 260 feet per NM to 3400.

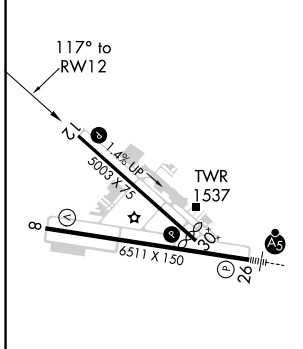
ASOS 135.575	SEATTLE CENTER 123.95 290.55	LEWISTON TOWER ★ 119.4 (CTAF) 0 318.8	GND CON 121.9	UNICOM 122.95
------------------------	--	---	-------------------------	-------------------------



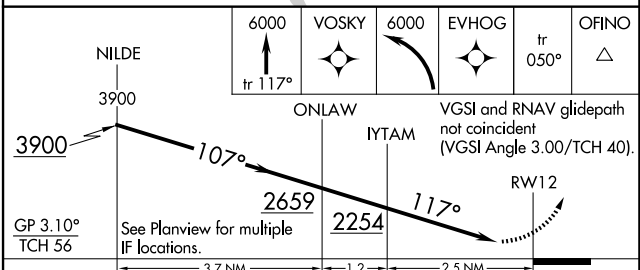
NW-1, 15 MAY 2025 to 12 JUN 2025

NW-1, 15 MAY 2025 to 12 JUN 2025

ELEV	1442	D	TDZE	1417
------	-------------	---	------	-------------



- REIL Rwy 8
- REIL Rwy 12
- HIRL Rwy 8-26
- MIRL Rwy 12-30



CATEGORY	A	B	C	D
RNP 0.30 DA*		1685-7 ⁷ / ₈	268 (300-7 ⁷ / ₈)	
RNP 0.30 DA		1889-1 ³ / ₈	472 (500-1 ³ / ₈)	

AUTHORIZATION REQUIRED