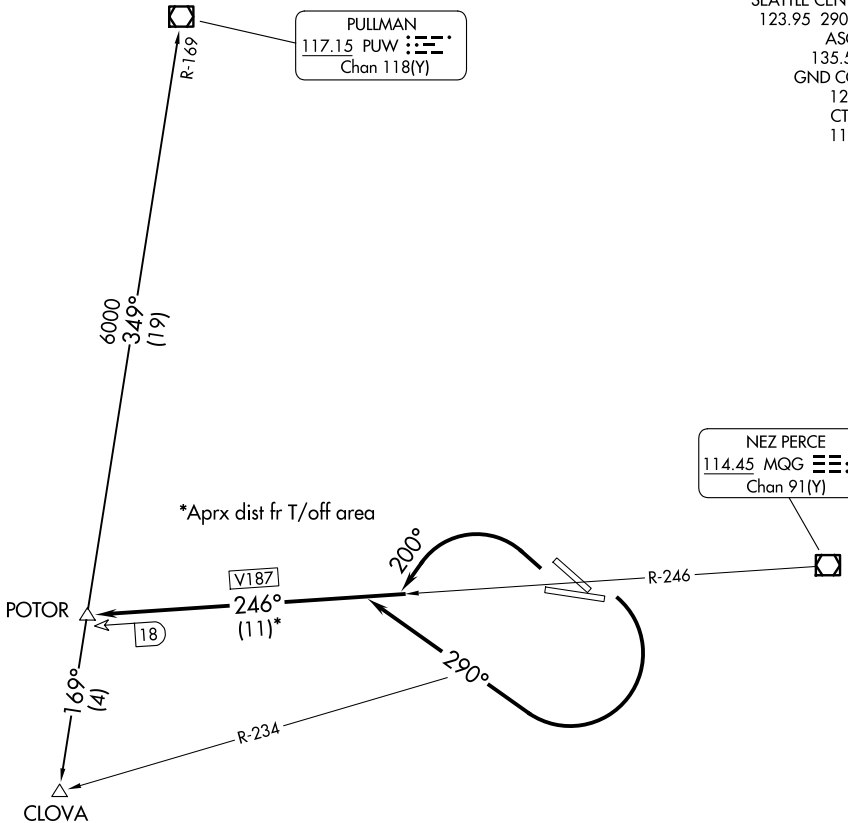


SEATTLE CENTER  
123.95 290.55  
ASOS  
135.575  
GND CON  
121.9  
CTAF  
119.4

PULLMAN  
117.15 PUW  
Chan 118(Y)

NEZ PERCE  
114.45 MQG  
Chan 91(Y)



NW-1, 15 MAY 2025 to 12 JUN 2025

NW-1, 15 MAY 2025 to 12 JUN 2025

NOTE: Minimum climb required: Rwy 26 and 30-300'/NM to 4700' (750 FPM/150K, 1000 FPM/200K); Rwy 8 and 12-270'/NM to 4700' (675 FPM/150K, 900 FPM/200K) or 4600' ceiling and three miles visibility.  
NOTE: Departures may be restricted to cross POTOR INT at 5000.

NOTE: Chart not to scale.

DEPARTURE ROUTE DESCRIPTION

TAKEOFF RUNWAYS 8, 12: Turn right heading 290°. Thence. . .

TAKEOFF RUNWAYS 26, 30: Turn left heading 200°. Thence. . .

. . . Intercept and proceed via MQG R-246 (V187) to POTOR INT. Thence via (assigned route) or (transition).

CLOVA TRANSITION (POTOR2.CLOVA): From over POTOR INT on PUW R-169 to CLOVA INT.

PULLMAN TRANSITION (POTOR2.PUW): From over POTOR INT on PUW R-169 to PUW VOR/DME.