

CLOVIS, NEW MEXICO

TACAN RWY 31

TACAN CVS Chan 53	APCH CRS 316°	Rwy ldg TDZE Arprt Elev	8196 4270 4295
----------------------	------------------	----------------------------	----------------------

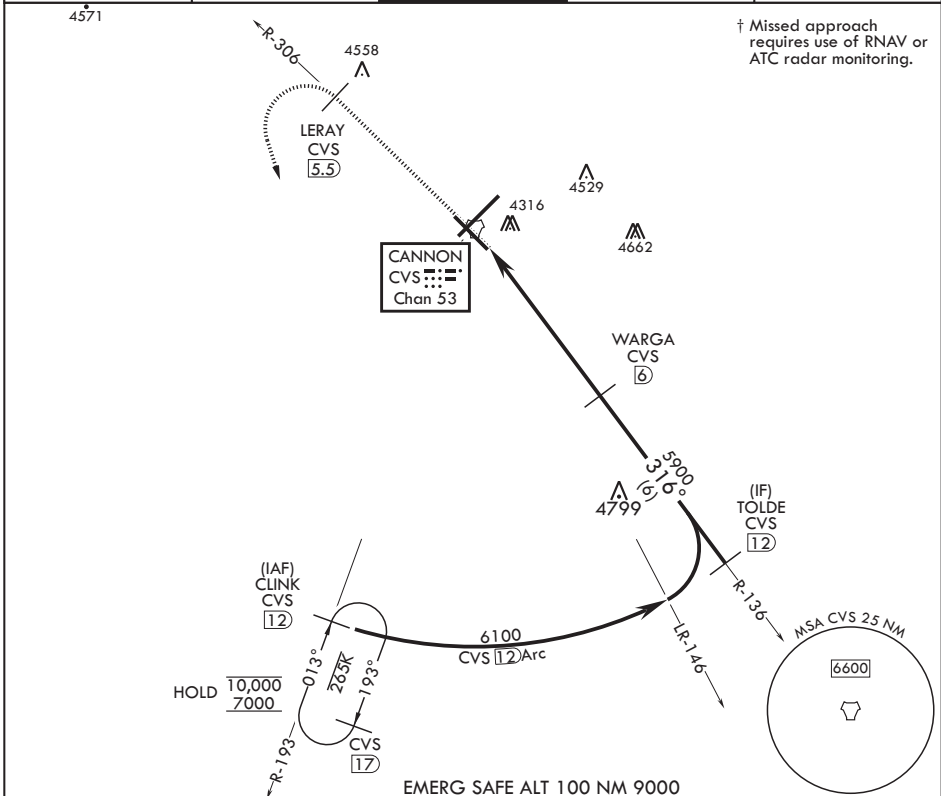
AL-512 (USAF)

CANNON AFB (KCVS)

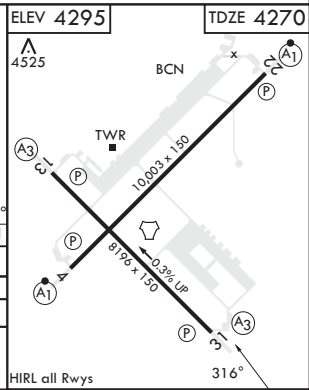
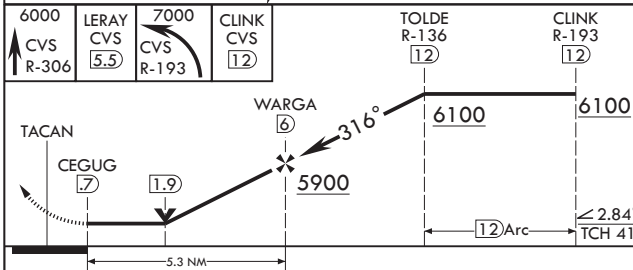
† * When ALS inop, increase CAT AB vis to 1 mile, CAT CDE increase vis to 1 3/8 miles.

SSALR
A3
† MISSED APPROACH: Climb to 6000 out CVS TACAN R-306 to 5.5 DME (LERAY) then turn left climbing to 7000 intercept CVS TACAN R-193 to 12 DME (CLINK) and hold.

ATIS 119.1 269.9	CANNON APP CON 118.425 352.1	TOWER 120.4 270.25	GND CON 121.9 275.8	CLNC DEL 120.2 293.225
---------------------	---------------------------------	-----------------------	------------------------	---------------------------



† Missed approach requires use of RNAV or ATC radar monitoring.



CATEGORY	A	B	C	D	E
S-31 *	4700-½ 430 (500-½)		4700-¾ 430 (500-¾)		
CIRCLING	4840-1 545 (600-1)		4860-1½ 565 (600-1½)	5000-2¼ 705 (800-2¼)	5020-2½ 725 (800-2½)

CLOVIS, NEW MEXICO

34°23'N - 103°19'W

CANNON AFB (KCVS)

Amdt 3 10OCT19

TACAN RWY 31

SW-1, 15 MAY 2025 to 12 JUN 2025

SW-1, 15 MAY 2025 to 12 JUN 2025