

# TACAN RWY 22

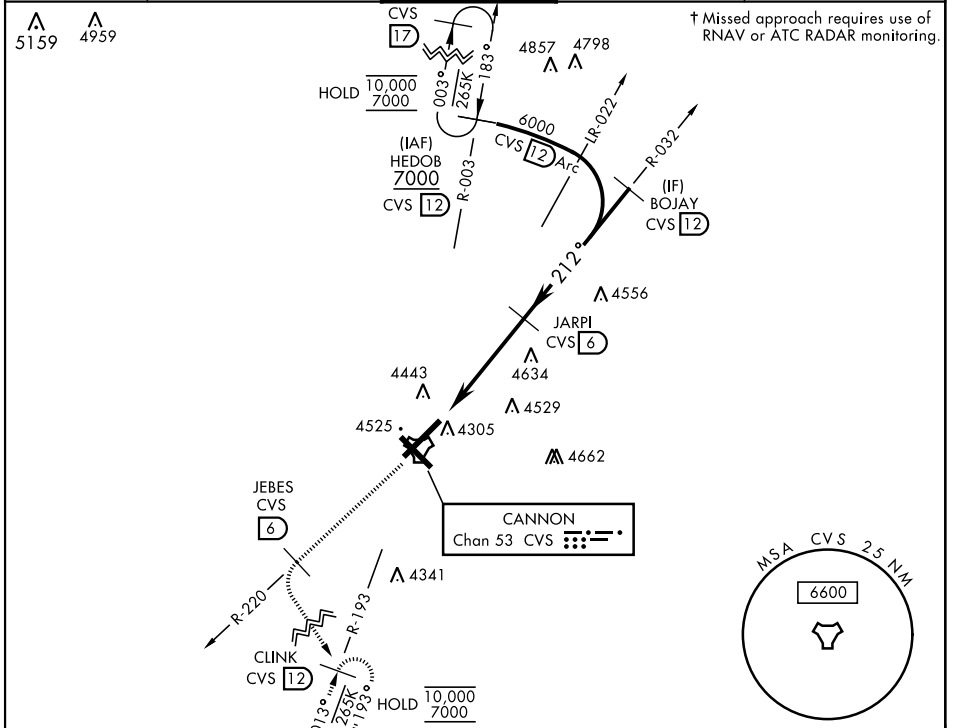
TACAN CVS Chan <b>53</b>	APCH CRS <b>212°</b>	Rwy Idg <b>10,003</b> TDZE <b>4295</b> Arprt Elev <b>4295</b>
--------------------------	----------------------	---

AL-512 [USAF]

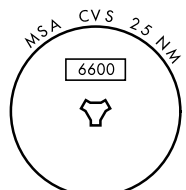
CANNON AFB (KCVS)

▼ \*When ALS inop, increase CAT AB RVR to 55 and vis to 1 mile, increase CAT CDE vis to 1¼ miles.
ALS-F-1 
† MISSED APPROACH: Climb to 6000 out CVS TACAN R-220 to 6 DME (JEBES) then climbing left turn to 7000 intercept CVS R-193 to 12 DME (CLINK) and hold.

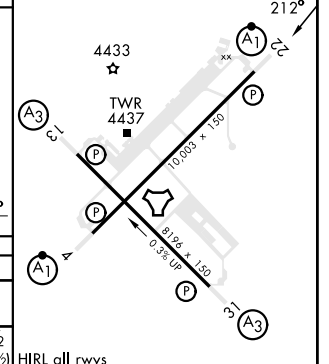
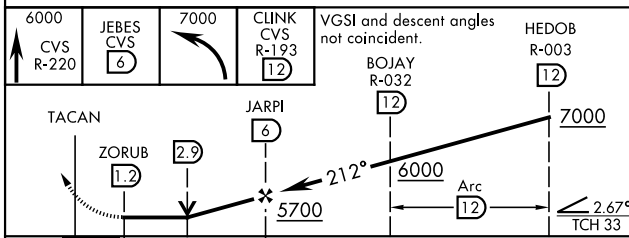
ATIS <b>119.1 269.9</b>	CANNON APP CON <b>118.425 352.1</b>	CANNON TOWER <b>120.4 270.25</b>	GND CON <b>121.9 275.8</b>	CLNC DEL <b>120.2 293.225</b>
-------------------------	-------------------------------------	----------------------------------	----------------------------	-------------------------------




† Missed approach requires use of RNAV or ATC RADAR monitoring.



EMERG SAFE ALT 100 NM 9000	ELEV 4295	TDZE 4295
----------------------------	-----------	-----------



CATEGORY	A	B	C	D	E
S-22 *	4900/24	605 (700-½)	4900-1¾	605 (700-1¾)	
 CIRCLING	4900-1	605 (700-1)	4900-1¾ 605 (700-1¾)	5000-2¼ 705 (800-2¼)	5020-2½ 725 (800-2½)

HIRL all rwys

# TACAN RWY 22

SW-1, 15 MAY 2025 to 12 JUN 2025

SW-1, 15 MAY 2025 to 12 JUN 2025