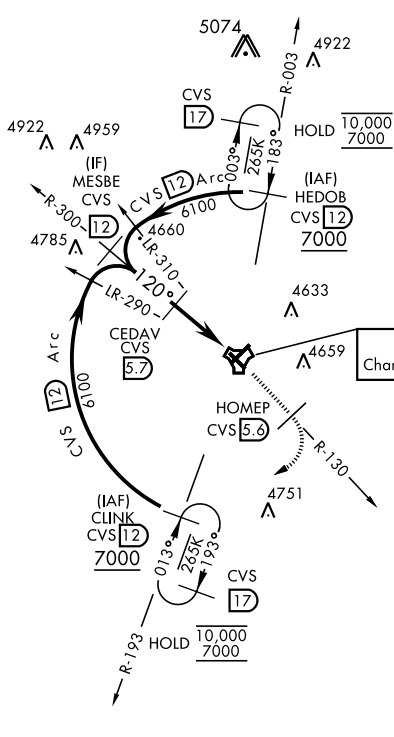


CLOVIS, NEW MEXICO

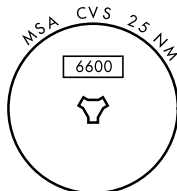
TACAN RWY 13

TACAN CVS Chan 53	APCH CRS 120°	Rwy Idg 8196 TDZE 4294 Arprt Elev 4295	AL-512 [USAF]	CANNON AFB (KCVS)
<p>▼ * When ALS inop, increase CAT AB vis to 1 mile, CAT CDE vis to 1½ miles.</p>			SSALR (A3)	† MISSED APPROACH: Climb to 6000 out CVS TACAN R-130 to 5.6 DME (HOMEP) then turn right climbing to 7000 intercept CVS R-193 to 12 DME (CLINK) and hold.
ATIS 119.1 269.9	CANNON APP CON 118.425 352.1	CANNON TOWER 120.4 270.25	GND CON 121.9 275.8	CLNC DEL 120.2 293.225

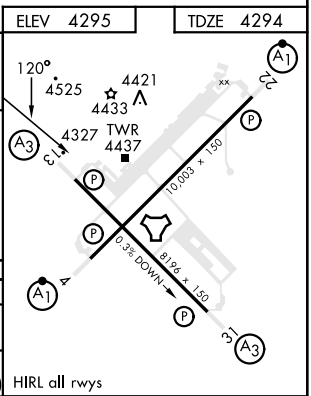
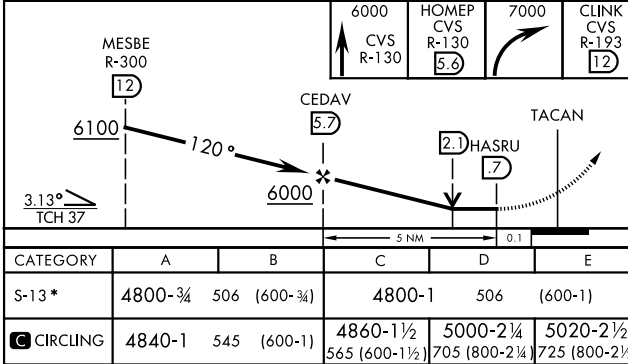


† Missed approach requires use of RNAV or ATC radar monitoring.

CANNON
Chan 53 CVS



EMERG SAFE ALT 100 NM 9000



CLOVIS, NEW MEXICO 34° 23' N - 103° 19' W CANNON AFB (KCVS)

Amdt 2 09NOV17

TACAN RWY 13

SW-1, 15 MAY 2025 to 12 JUN 2025

SW-1, 15 MAY 2025 to 12 JUN 2025

CATEGORY	A	B	C	D	E
S-13*	4800-¾	506 (600-¾)	4800-1	506	(600-1)
CIRCLING	4840-1	545 (600-1)	4860-1½ 565 (600-1½)	5000-2¼ 705 (800-2¼)	5020-2½ 725 (800-2½)

HIRL all rwys