

CLOVIS, NEW MEXICO

# ILS or LOC RWY 4

LOC I-GLO <b>108.5</b>	APCH CRS <b>038°</b>	Rwy Idg <b>10,003</b> TDZE <b>4284</b> Arprt Elev <b>4295</b>
---------------------------	-------------------------	---

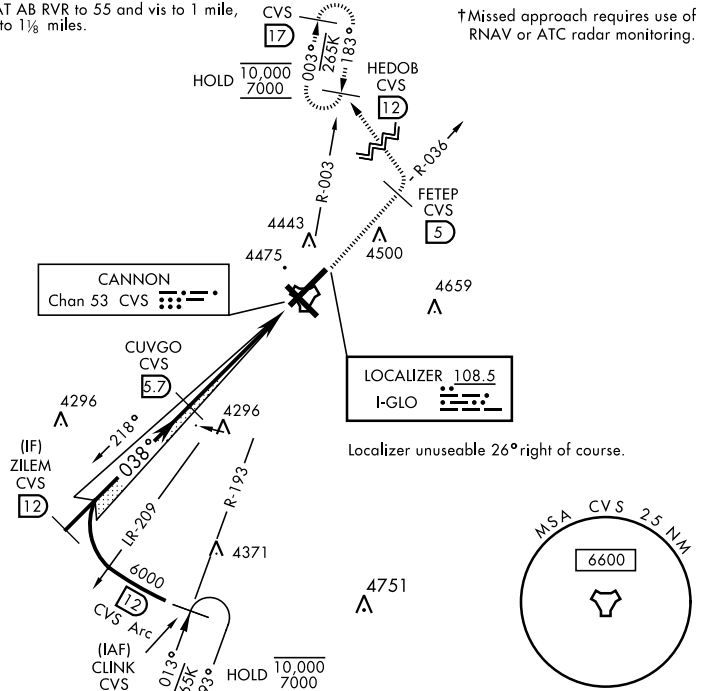
AL-512 [USAF]

CANNON AFB (KCVS)

ATC RADAR or DME required.		ALSF-1	† MISSED APPROACH: Climb to 6000 out CVS TACAN R-036 to 5 DME (FETEP) turning left climb to 7000 intcp CVS R-003 to 12 DME (HEDOB) and hold.	
▼ *When ALS inop, increase all CAT RVR to 40 and vis to ¾ miles.		(A1)		

ATIS <b>119.1 269.9</b>	CANNON APP CON <b>118.425 352.1</b>	CANNON TOWER <b>120.4 270.25</b>	GND CON <b>121.9 275.8</b>	CLNC DEL <b>120.2 293.225</b>
----------------------------	--	-------------------------------------	-------------------------------	----------------------------------

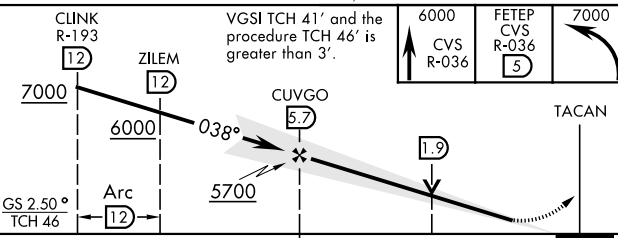
\*\*When ALS inop, increase CAT AB RVR to 55 and vis to 1 mile, CAT CDE RVR to 60 and vis to 1½ miles. † Missed approach requires use of RNAV or ATC radar monitoring.



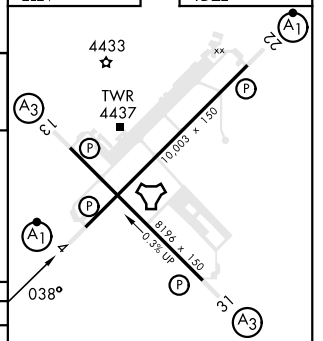
SW-1, 15 MAY 2025 to 12 JUN 2025

SW-1, 15 MAY 2025 to 12 JUN 2025

EMERG SAFE ALT 100 NM 9000



ELEV 4295	TDZE 4284
-----------	-----------



CATEGORY	A	B	C	D	E
S-ILS 4 *	4484/24		200	(200-½)	
S-LOC 4 **	4680/24	396 (400-½)	4680/35	396 (400-¾)	
CIRCLING	4840-1	545 (600-1)	4860-1½	5000-2¼	5020-2½
			565 (600-1½)	705 (800-2¼)	725 (800-2½)

HIRL all rwys					
FAF to MAP 5.2 NM					
Knots	60	90	120	150	180
Min:Sec	5:12	3:28	2:36	2:05	1:44

CLOVIS, NEW MEXICO  
Amdt 4 11OCT18

34°23'N-103°19'W

CANNON AFB (KCVS)

# ILS or LOC RWY 4