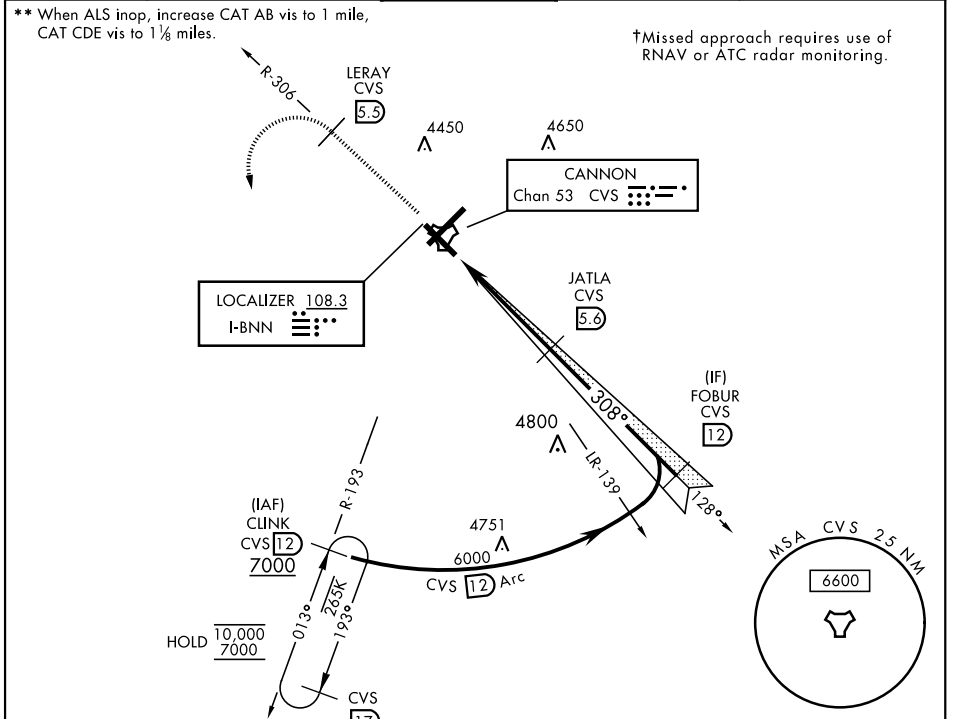


ILS or LOC RWY 31

LOC I-BNN 108.3	APCH CRS 308°	Rwy Ldg 8196 TDZE 4270 Arprt Elev 4295	AL-512 [USAF]	CANNON AFB (KCVS)
---------------------------	-------------------------	--	---------------	-------------------

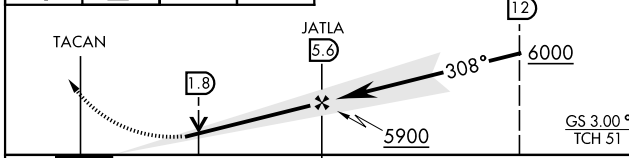
ATC RADAR or DME required.	SSALR (A3)	† MISSED APPROACH: Climb to 6000 out CVS TACAN R-306 to 5.5 DME (LERAY) then turn left climbing to 7000 intercept CVS R-193 to 12 DME (CLINK) and hold.
----------------------------	----------------------	---

ATIS 119.1 269.9	CANNON APP CON 118.425 352.1	CANNON TOWER 120.4 270.25	GND CON 121.9 275.8	CLNC DEL 120.2 293.225
----------------------------	--	-------------------------------------	-------------------------------	----------------------------------

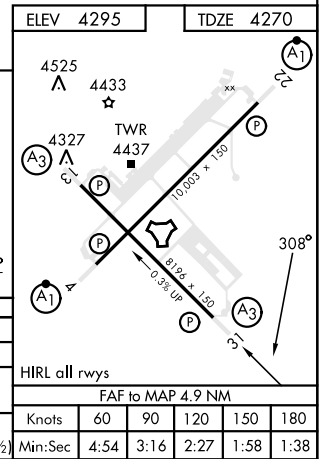


EMERG SAFE ALT 100 NM 9000

6000	LERAY CVS R-306 [5.5]	7000	CLINK CVS R-193 [12]	VGSI TCH (41') and the procedure TCH (51') is greater than 3'.
------	-----------------------	------	----------------------	--



CATEGORY	A	B	C	D	E
S-ILS 31*	4470-1/2		200	(200-1/2)	
S-LOC 31**	4660-1/2 390 (400-1/2)		4660-5/8 390 (400-5/8)		
CIRCLING	4840-1 545 (600-1)		4860-1 1/2 565 (600-1 1/2)	5000-2 1/4 705 (800-2 1/4)	5020-2 1/2 725 (800-2 1/2)



ILS or LOC RWY 31

SW-1, 15 MAY 2025 to 12 JUN 2025

SW-1, 15 MAY 2025 to 12 JUN 2025