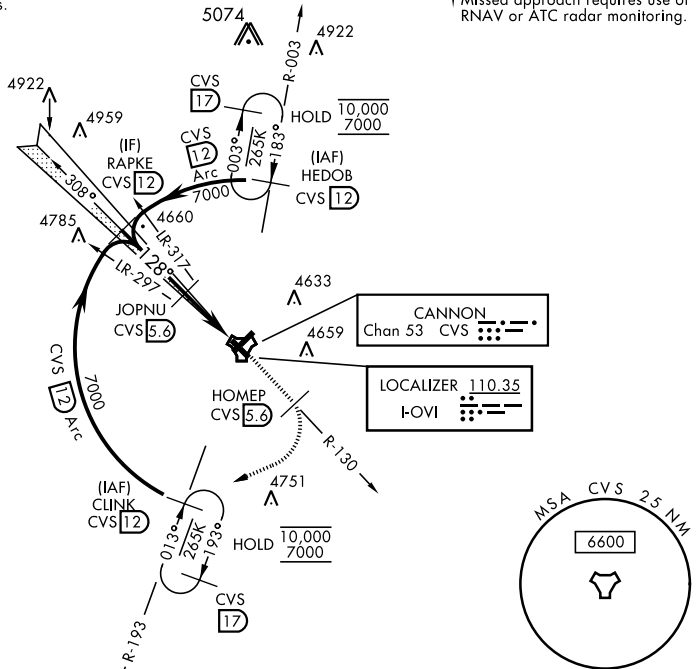


ILS or LOC RWY 13

LOC I-OVI 110.35	APCH CRS 128°	Rwy ldg TDZE Arprt Elev 8196 4294 4295	AL-512 [USAF]	CANNON AFB (KCVS)
ATC RADAR or DME required.			SSALR (A3)	† MISSED APPROACH: Climb to 6000 out CVS TACAN R-130 5.6 DME (HOMEP) then climbing right turn to 7000 intercept CVS R-193 to 12 DME (CLINK) and hold.
* When ALS inop, increase vis to ¾ mile.				
ATIS 119.1 269.9	CANNON APP CON 118.425 352.1	CANNON TOWER 120.4 270.25	GND CON 121.9 275.8	CLNC DEL 120.2 293.225

** When ALS inop, increase CAT AB vis to 1 mile; CAT CDE vis to 1¾ miles.

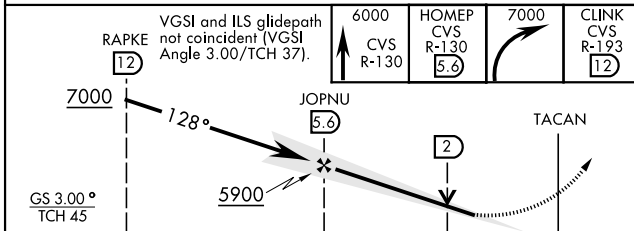
† Missed approach requires use of RNAV or ATC radar monitoring.



SW-1, 15 MAY 2025 to 12 JUN 2025

SW-1, 15 MAY 2025 to 12 JUN 2025

EMERG SAFE ALT 100 NM 8000



ELEV 4295	TDZE 4294
128°	4433
4525	TWR 4437
4327	51
A3	A1
A3	A3
HIRL all rwys	
FAF to MAP 4.9 NM	
Knots	60 90 120 150 180
Min:Sec	4:54 3:16 2:27 1:58 1:38

ILS or LOC RWY 13