

VOR/DME VIH	APP CRS	Rwy Ldg TDZE	5289
117.7	056°	1137	
Chan 124		Apt Elev	1148

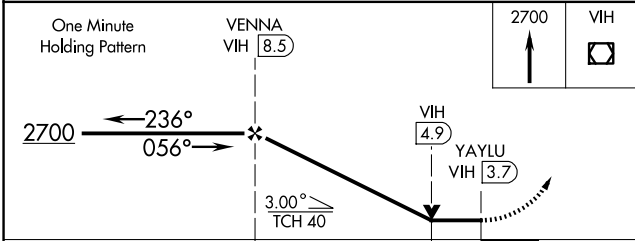
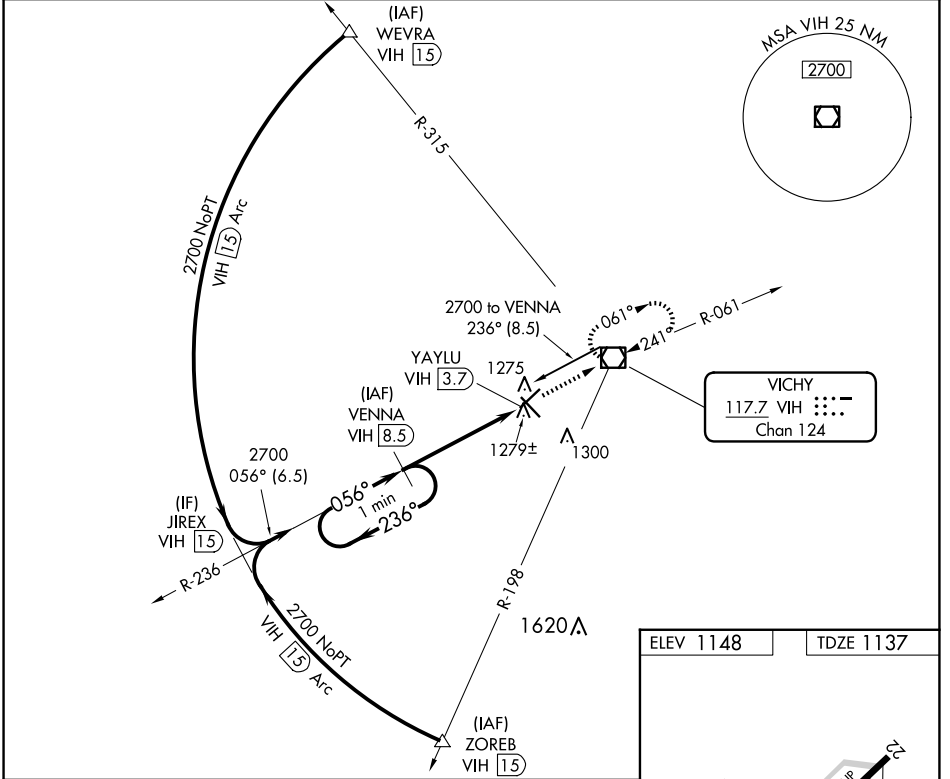
VOR/DME RWY 4

ROLLA NTL (VIH)

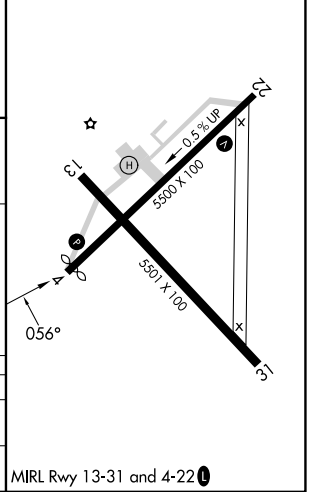
⚠ Visibility reduction by helicopters NA. When local altimeter setting not received, use Fort Leonard Wood altimeter setting; increase all MDA 80 feet and S-4 Cat D and Circling Cat D visibility ¼ SM. VDP NA with Fort Leonard Wood altimeter setting.

MISSED APPROACH: Climb to 2700 direct VIH VOR/DME and hold.

ASOS 119.025	KANSAS CITY CENTER 128.35 284.675	UNICOM 123.0 (CTAF) 0
------------------------	---------------------------------------------	---------------------------------



ELEV 1148	TDZE 1137
-----------	-----------



CATEGORY	A	B	C	D
S-4	1540-1	403 (400-1)	1540-1¼	403 (400-1¼)
CIRCLING	1600-1	452 (500-1)	1600-1½	1740-2 592 (600-2)

NC-3, 15 MAY 2025 to 12 JUN 2025

NC-3, 15 MAY 2025 to 12 JUN 2025