

VOR/DME VIH 117.7 Chan 124	APP CRS 241°	Rwy Idg TDZE Apt Elev	5500 1117 1148
--	------------------------	-----------------------------	---

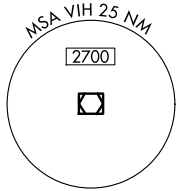
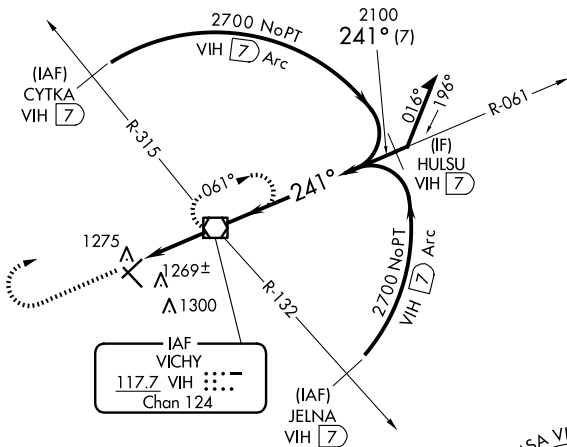
VOR RWY 22

ROLLA NTL (VIH)

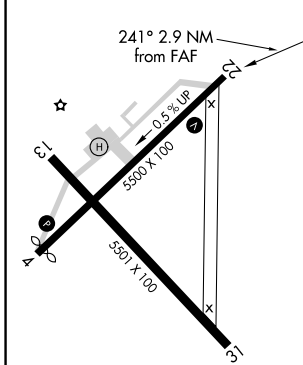
⚠ When local altimeter setting not received, use Fort Leonard Wood altimeter setting; increase all MDA 80 feet and S-22 Cat D and Circling Cat D visibility ¼ SM. VDP NA with Fort Leonard Wood altimeter setting.

MISSED APPROACH: Climb to 2700 then right turn direct VIH VOR/DME and hold.

ASOS 119.025	KANSAS CITY CENTER 128.35 284.675	UNICOM 123.0 (CTAF) 0
------------------------	---	--



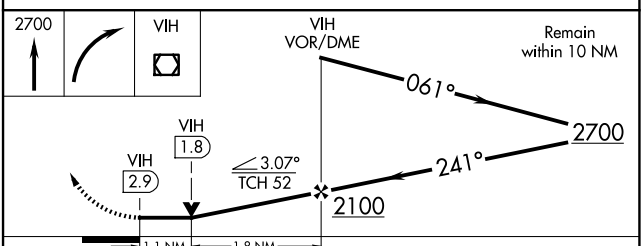
ELEV 1148	TDZE 1117
-----------	-----------



MIRL Rwy 13-31 and 4-22 **0**

FAF to MAP 2.9 NM

Knots	60	90	120	150	180
Min:Sec	2:54	1:56	1:27	1:10	0:58



CATEGORY	A	B	C	D
S-22	1520-1	403 (400-1)	1520-1¼	403 (400-1¼)
CIRCLING	1600-1	452 (500-1)	1600-1½	1740-2 592 (600-2)

NC-3, 15 MAY 2025 to 12 JUN 2025

NC-3, 15 MAY 2025 to 12 JUN 2025