

EDWARDS, CALIFORNIA

ILS or LOC/DME Y RWY 23L

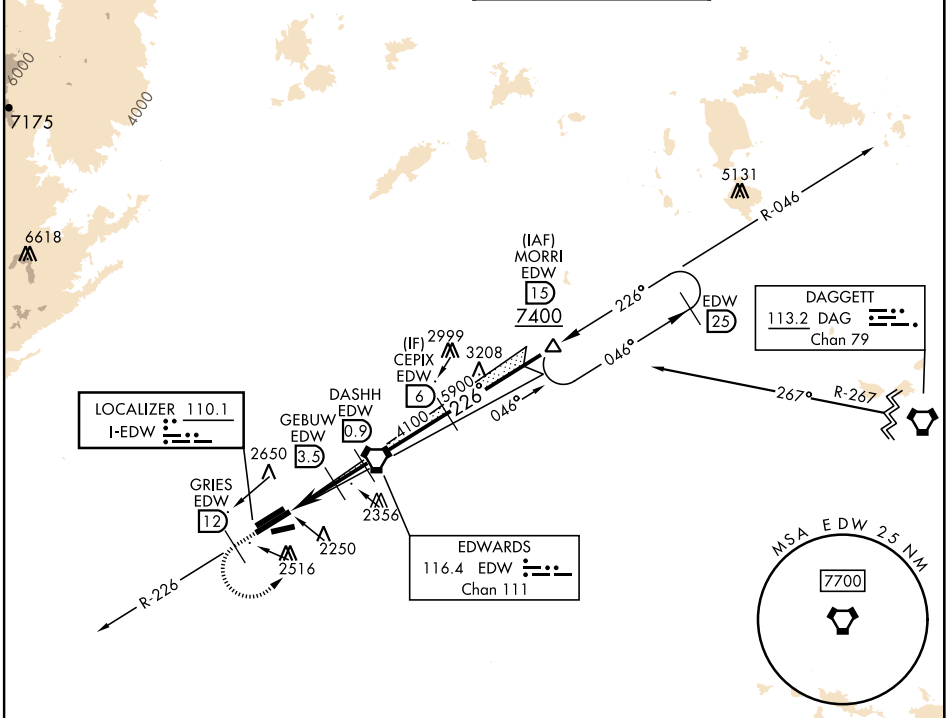
LOC I-EDW 110.1	APCH CRS 226°	Rwy Ldg 15,024 TDZE 2286 Arpt Elev 2311
---------------------------	-------------------------	--

[USAF]

EDWARDS AFB (KEDW)

⚠ *Circling not authorized NW of Rwy 5L-23R.
 Circling not authorized at night to Rwy 5L-23R.
 MISSED APPROACH: Climb to 7400. Track EDW R-226 outbound to GRIES, then turn left direct MORRI and hold.
 Missed approach requires use of RNAV or ATC RADAR monitoring.

ATIS ★ 127.425 269.9	JOSHUA APP/DEP CON 133.65 348.7	TOWER ★ 120.7 (CTAF) 318.1 (CTAF)	GND CON 121.8 225.4
--------------------------------	---	---	-------------------------------



SW-3, 15 MAY 2025 to 12 JUN 2025

SW-3, 15 MAY 2025 to 12 JUN 2025

ELEV	2311	TDZE	2286
------	------	------	------

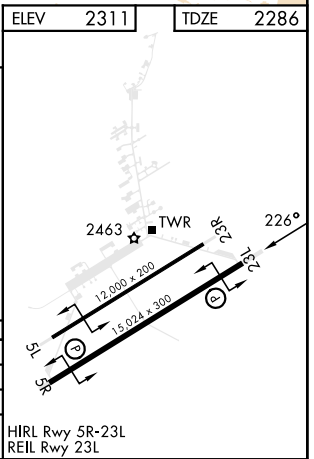
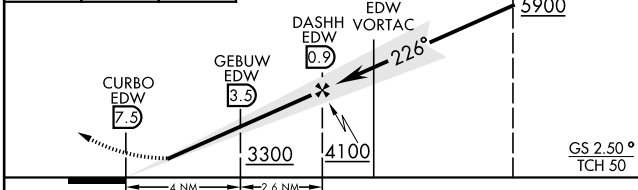
EMERG SAFE ALT 100 NM 16,500

7400 EDW R-226

GRIES EDW (12)

VGSI and ILS glidepath not coincident (VGSI Angle 3.00/TCH 49).

CEPIX EDW (6)



CATEGORY	A	B	C	D	E
S-ILS 23L		2486- ³ / ₄	200	(200- ³ / ₄)	
S-LOC 23L		2540-1	254	(300-1)	
CIRCLING*	2880-1	569 (600-1)	2880-1 ¹ / ₂ 569 (600-1 ¹ / ₂)	2880-2	569 (600-2)

HIRL Rwy 5R-23L
REIL Rwy 23L

EDWARDS, CALIFORNIA 34° 54' N - 117° 53' W EDWARDS AFB (KEDW)

Amtd 2 23APR20

ILS or LOC/DME Y RWY 23L