

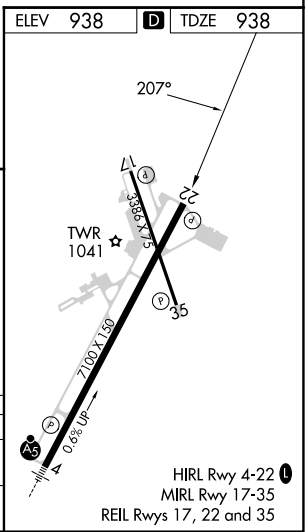
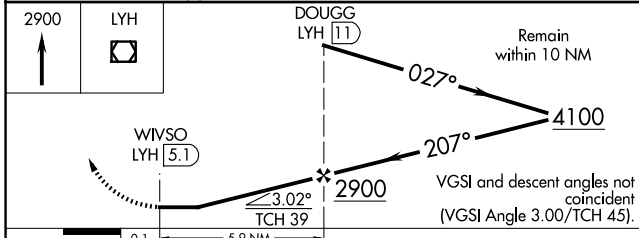
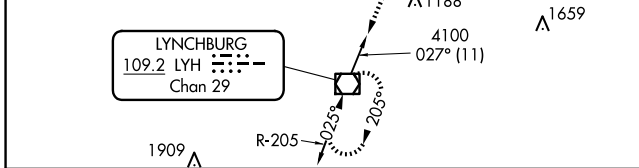
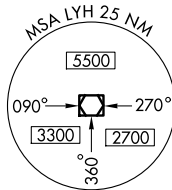
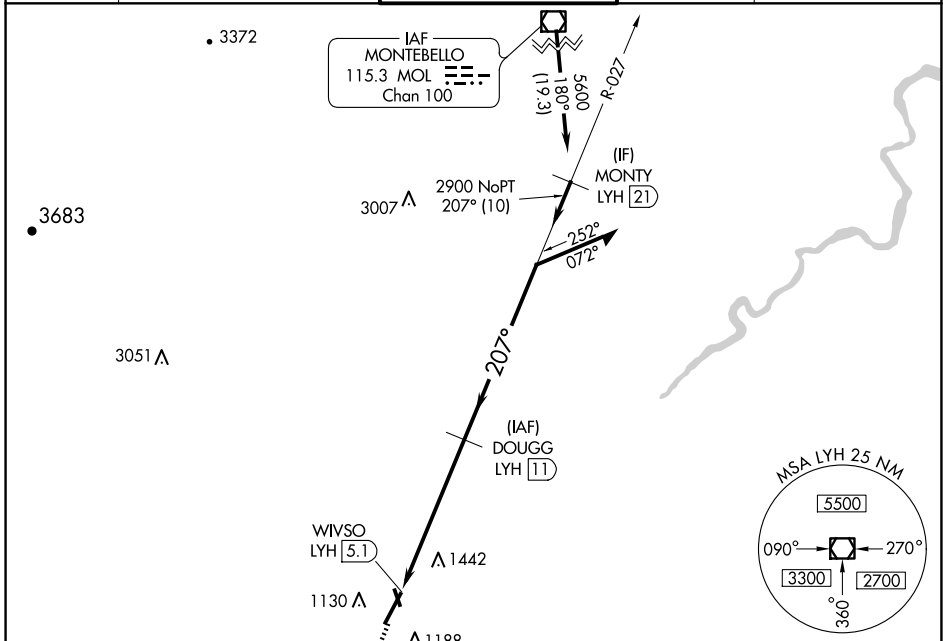
VOR/DME LYH	APP CRS	Rwy Idg	7100
109.2	207°	TDZE	938
Chan 29		Apt Elev	938

VOR RWY 22

LYNCHBURG RGNL/PRESTON GLENN FLD (LYH)

DME required.		LYNCHBURG TOWER ★		GND CON	UNICOM
<p>▼ Rwy 22 helicopter visibility reduction below 3/4 SM NA. ▲ Circling Rwy 17 NA at night.</p>		<p>127.65 (CTAF) 0 257.8</p>		121.9	122.95

ATIS	ROANOKE APP CON	LYNCHBURG TOWER ★	GND CON	UNICOM
119.8	135.0 254.325	127.65 (CTAF) 0 257.8	121.9	122.95



ELEV 938	TDZE 938			
<p>WIVSO LYH (5.1) 2900</p> <p>DOUGG LYH (11) 4100</p> <p>Remain within 10 NM</p> <p>027°</p> <p>207°</p> <p>3.02°</p> <p>TCH 39</p> <p>VGSI and descent angles not coincident (VGSI Angle 3.00/TCH 45).</p>				
CATEGORY	A	B	C	D
S-22	1740-1 802 (900-1)	1740-1 1/4 802 (900-1 1/4)	1740-2 1/4 802 (900-2 1/4)	1740-2 1/2 802 (900-2 1/2)
CIRCLING	1740-1 802 (900-1)	1780-1 1/4 842 (900-1 1/4)	1800-2 1/2 862 (900-2 1/2)	1800-2 3/4 862 (900-2 3/4)

VOR RWY 22

HIRL Rwy 4-22
MIRL Rwy 17-35
REIL Rws 17, 22 and 35

NE-3, 15 MAY 2025 to 12 JUN 2025

NE-3, 15 MAY 2025 to 12 JUN 2025